

LOM OS 395	APP CRS 003°	Rwy Idg 8002
		TDZE 808
		Apt Elev 808

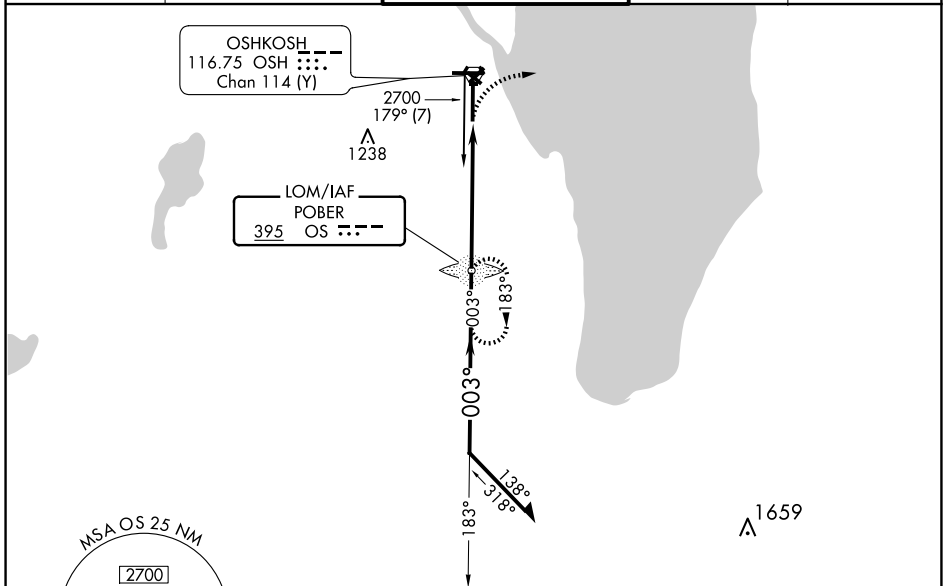
NDB RWY 36

WITTMAN RGNL (OSH)

NA When local altimeter setting not received, use Fond Du Lac altimeter setting and increase all MDA 40 feet; increase S-36 Cat C/D and Circling Cat C visibilities 1/8 mile, increase Circling Cat D visibility 1/4 mile. For inop MALSRS, increase S-36 Cat D visibility to 1 1/8 mile. For inop MALSRS when using Fond Du Lac altimeter setting, increase S-36 Cat D visibility to 2 miles. Circling to Rwy 5, 23, and 31 NA at night.

MALSRS
MISSED APPROACH: Climbing right turn to 3000 on heading 090° then right turn direct POBER LOM and hold.

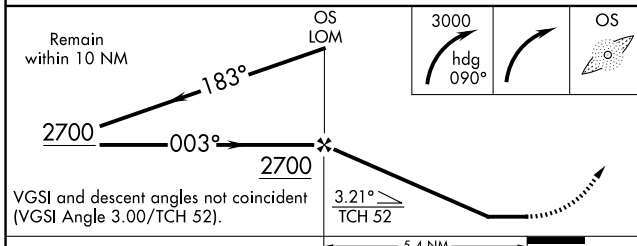
ATIS 125.9	MILWAUKEE APP CON 127.0 263.075	OSHKOSH TOWER ★ 118.5 (CTAF) 290.9	GND CON 132.3	UNICOM 122.95
----------------------	---	--	-------------------------	-------------------------



ELEV 808	D	TDZE 808
----------	----------	----------

REIL Rwy 18 and 27
HIRL Rwy 9-27 and 18-36

FAF to MAP 5.4 NM					
Knots	60	90	120	150	180
Min:Sec	5:24	3:36	2:42	2:10	1:48



CATEGORY	A	B	C	D
S-36	1460/40	652 (700-3/4)	1460-1 3/8	652 (700-1 1/8)
C CIRCLING	1460-1	652 (700-1)	1460-1 7/8	1460-2
			652 (700-1 7/8)	652 (700-2)

EC-3, 20 FEB 2025 to 20 MAR 2025

EC-3, 20 FEB 2025 to 20 MAR 2025