

JACKSONVILLE, NORTH CAROLINA

RNAV (GPS) RWY 1

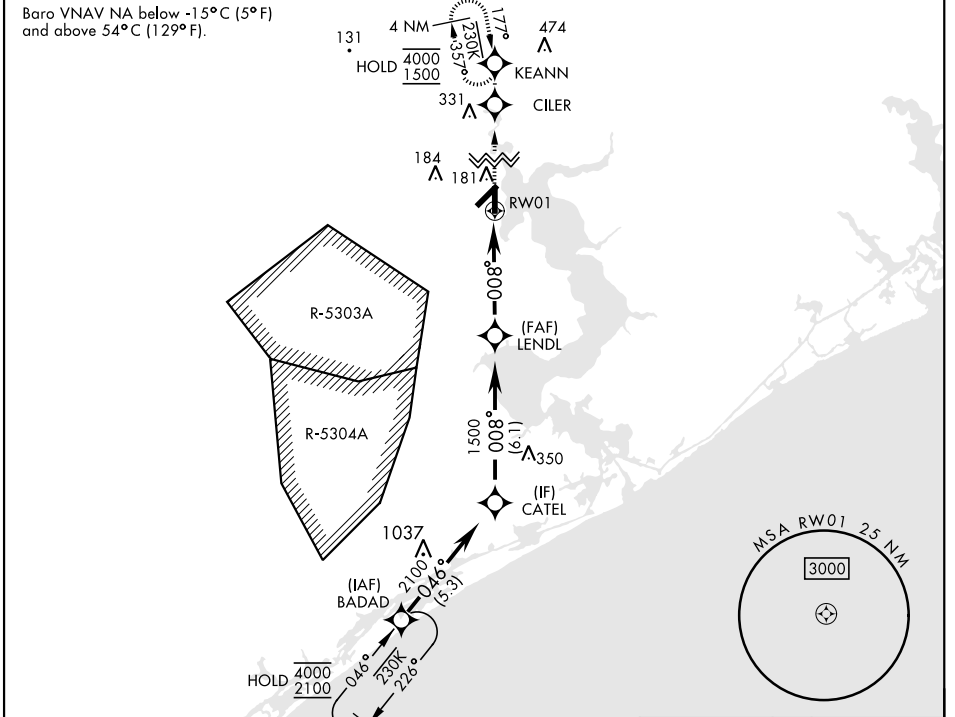
APCH CRS	Rwy ldg	4789
008°	THRE	24
	Arprt Elev	26

[USN] NEW RIVER MCAS (MCCUTCHEON FLD) (KNCA)

RNP APCH	SALSF 	MISSED APPROACH: Climb to 1500 direct CILER, 008° track to KEANN and hold.
RADAR required		

*When ALS inop, increase vis to 7/8 mile.
**When ALS inop, increase vis CAT AB to 1 mile, CAT CD to 1 1/8 miles.

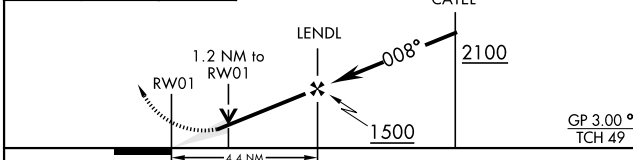
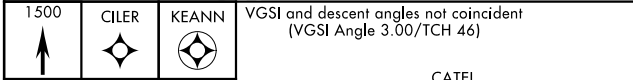
ATIS ★	CHERRY POINT APP CON	TOWER ★	GND CON	CLNC DEL	ASR/PAR
288.325	119.35 377.175	134.95 (CTAF) ★ 360.2	121.8 254.275	269.25	



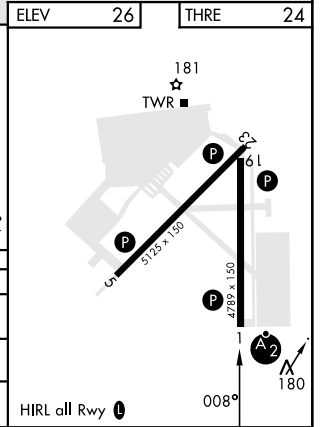
SE-2, 20 FEB 2025 to 20 MAR 2025

SE-2, 20 FEB 2025 to 20 MAR 2025

EMERG SAFE ALT 100 NM 3400	ELEV	26	THRE	24
----------------------------	------	----	------	----



CATEGORY	A	B	C	D
LNNAV/ VNAV DA *	311-3/4 287 (300-3/4)	322-3/4 298 (300-3/4)	330-3/4 306 (400-3/4)	341-3/4 317 (400-3/4)
LNNAV MDA **	440-3/4	416 (500-3/4)	440-1	416 (500-1)
CIRCLING	500-1	474 (500-1)	700-2 674 (700-2)	700-2 1/4 674 (700-2 1/4)



JACKSONVILLE, NORTH CAROLINA 34° 43'N-77° 26'W NEW RIVER MCAS (MCCUTCHEON FLD) (KNCA)

Amdt 5 28DEC23

RNAV (GPS) RWY 1