

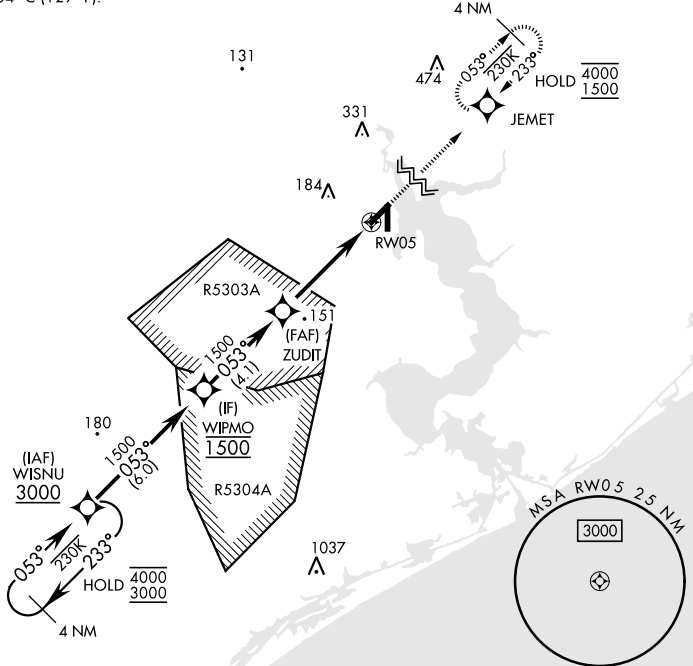
JACKSONVILLE, NORTH CAROLINA

# RNAV (GPS) RWY 5

WAAS Chan <b>77243</b> <b>W05A</b>	APCH CRS <b>053°</b>	Rwy Idg TDZE <b>26</b> Arpt Elev <b>26</b>	5125	[USN]	NEW RIVER MCAS (MCCUTCHEON FLD)	(KNCA)
RNP APCH				MISSED APPROACH: Climb to 1500 direct JEMET and hold.		
RADAR required						

ATIS ★ <b>288.325</b>	CHERRY POINT APP CON <b>119.35 377.175</b>	TOWER ★ <b>134.95(CTAF) 0★ 360.2</b>	GND CON <b>121.8 254.275</b>	CLNC DEL <b>269.25</b>	ASR/PAR
--------------------------	---	---	---------------------------------	---------------------------	---------

For uncompensated Baro-VNAV systems, LNAV/VNAV NA below -15°C (5°F) or above 54°C (129°F).



EMERG SAFE ALT 100 NM 3400

WISNU		VGSI and descent angles not coincident (VGSI Angle 3.00/TCH 37)		ELEV	26	TDZE	26
WIPMO		ZUDIT	JEMET				
GP 3.00° TCH 50		1.2 NM to RW05					
4.5 NM							
CATEGORY	A	B	C	D			
LPV DA	226- $\frac{3}{4}$		200	(200- $\frac{3}{4}$ )			
LNAV/VNAV DA	308- $\frac{7}{8}$ 282 (300- $\frac{7}{8}$ )	319- $\frac{7}{8}$ 293 (300- $\frac{7}{8}$ )	327- $\frac{7}{8}$ 301 (400- $\frac{7}{8}$ )	338- $\frac{7}{8}$ 312 (400- $\frac{7}{8}$ )			
LNAV MDA	440-1	414 (500-1)	440-1 $\frac{1}{8}$	414 (500-1 $\frac{1}{8}$ )			
<b>C</b> CIRCLING	500-1	474 (500-1)	700-2 674 (700-2)	700-2 $\frac{1}{4}$ 674 (700-2 $\frac{1}{4}$ )			

JACKSONVILLE, NORTH CAROLINA 34°43'N-77°26'W NEW RIVER MCAS (MCCUTCHEON FLD) (KNCA)

Amdt 8 28DEC23

# RNAV (GPS) RWY 5

SE-2, 20 FEB 2025 to 20 MAR 2025

SE-2, 20 FEB 2025 to 20 MAR 2025