

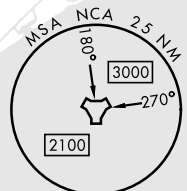
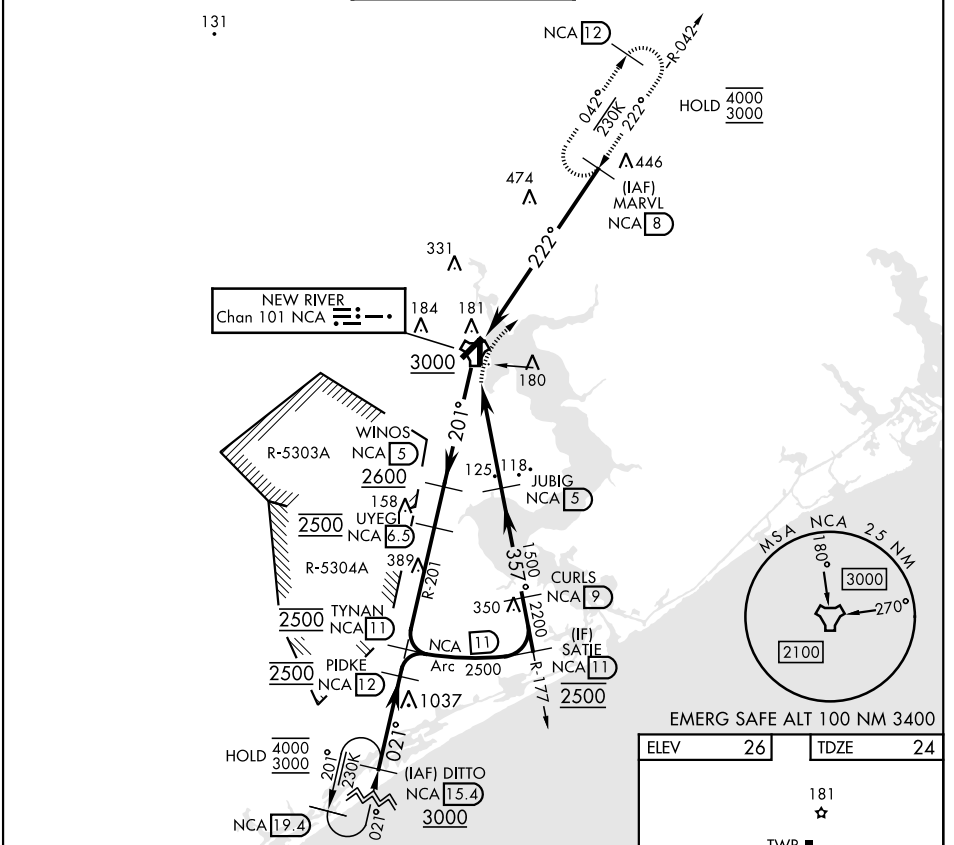
TACAN RWY 1

TACAN NCA Chan 101	APCH CRS 357°	Rwy ldg TDZE Arprt Elev	4789 24 26
-----------------------	------------------	-------------------------------	------------------

[USN] NEW RIVER MCAS (MCCUTCHEON FLD) (KNCA)

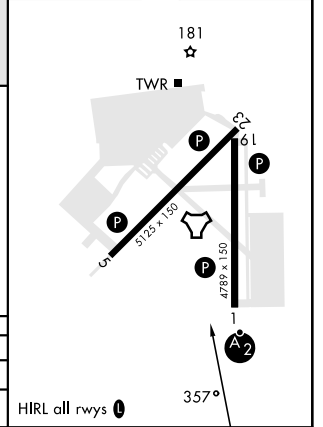
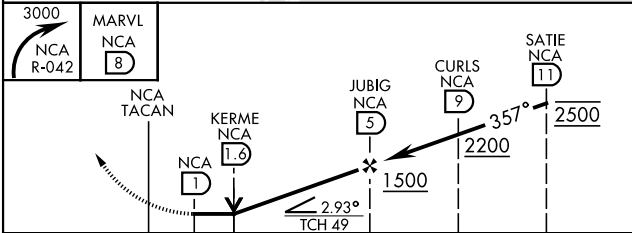
RADAR required	SALSF 	MISSED APPROACH: Climbing right turn to 3000 direct MARVL (NCA TACAN R-042/ 8 DME) and hold. Continue climb-in-hold to 3000.
* When ALS inop, increase vis CAT AB to 1 mile, CAT CD to 1½ miles.		

ATIS ★ 288.325	CHERRY POINT APP CON 119.35 377.175	TOWER ★ 134.95(CTAF) 0★ 360.2	GND CON 121.8 254.275	CLNC DEL 269.25	ASR/PAR
-------------------	--	----------------------------------	--------------------------	--------------------	---------



EMERG SAFE ALT 100 NM 3400

ELEV 26	TDZE 24
---------	---------



CATEGORY	A	B	C	D
S-1*	440-¾	416 (500-¾)	440-1	416 (500-1)
C CIRCLING	500-1	474 (500-1)	700-2 674 (700-2)	700-2½ 674 (700-2½)

HIRL all rwys

TACAN RWY 1

SE-2, 20 FEB 2025 to 20 MAR 2025

SE-2, 20 FEB 2025 to 20 MAR 2025