

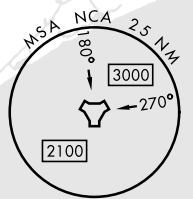
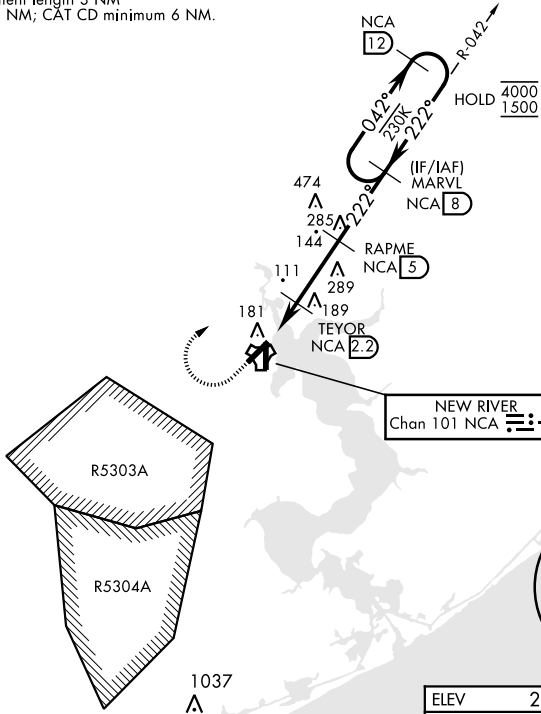
TACAN RWY 23

TACAN NCA Chan 101	APCH CRS 222°	Rwy Idg TDZE Arprt Elev	5125 24 26	[USN] NEW RIVER MCAS (MCCUTCHEON FLD) (KNCA)
------------------------------	-------------------------	-------------------------------	---------------------------------------	--

RADAR required		MISSED APPROACH: Climb to 600 then climbing right turn to 1500, intercept NCA R-042 to MARVL and hold.			
ATIS ★ 288.325	CHERRY POINT APP CON 119.35 377.175	TOWER ★ 134.95(CTAF) 0★ 360.2	GND CON 121.8 254.275	CLNC DEL 269.25	ASR/PAR

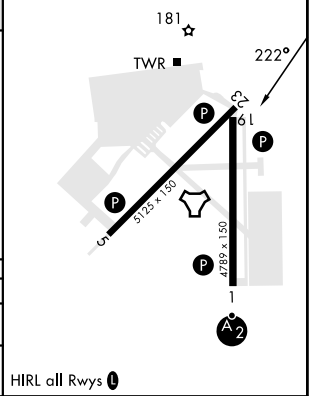
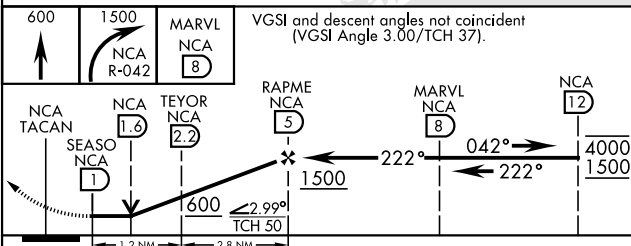
135

CAUTION: Intermediate segment length 3 NM less than CAT AB minimum 5 NM; CAT CD minimum 6 NM.



ELEV	26	TDZE	24
------	----	------	----

EMERG SAFE ALT 100 NM 3400



CATEGORY	A		B	C		D
S-23	440-1	416	(500-1)	440-1 1/8	416	(500-1 1/8)
CIRCLING	500-1	474	(500-1)	700-2 674 (700-2)	700-2 1/4 674 (700-2 1/4)	

HIRL all Rwy's 1

TACAN RWY 23

SE-2, 20 FEB 2025 to 20 MAR 2025

SE-2, 20 FEB 2025 to 20 MAR 2025