

# ILS or LOC RWY 36

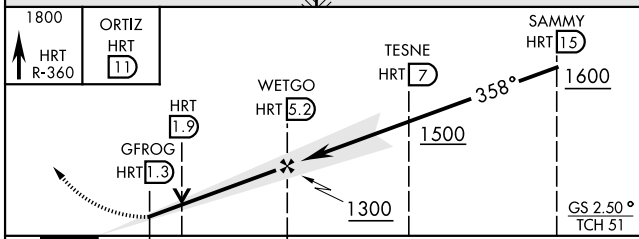
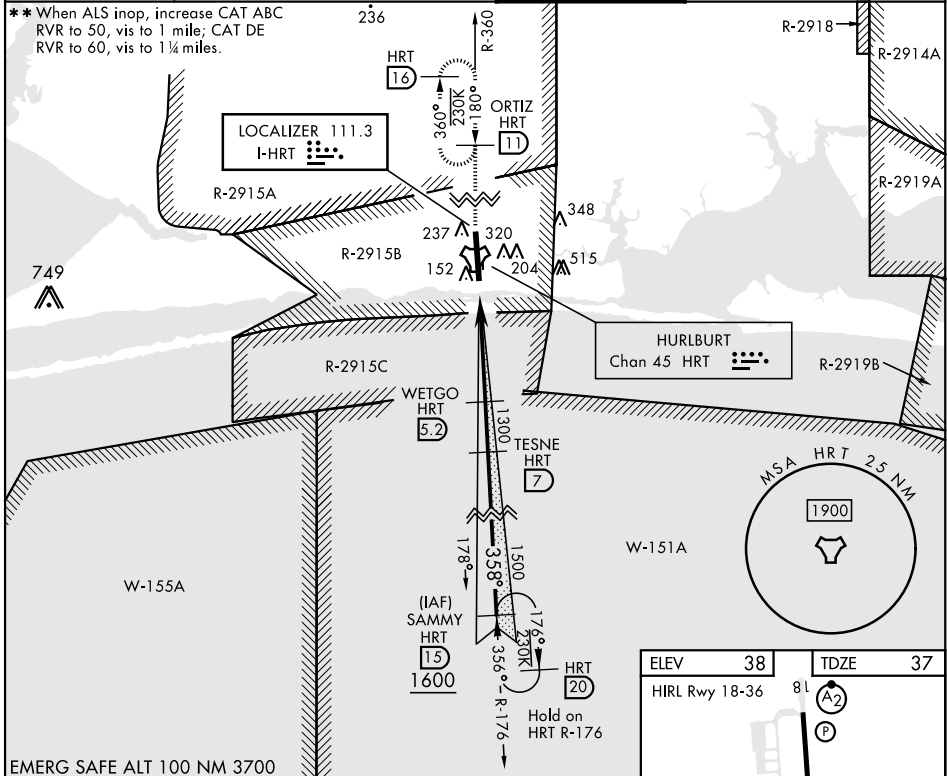
LOC I-HRT <b>111.3</b>	APCH CRS <b>358°</b>	Rwy Idg TDZE Arpt Elev <b>9600</b> <b>37</b> <b>38</b>
---------------------------	-------------------------	---

[USAF]

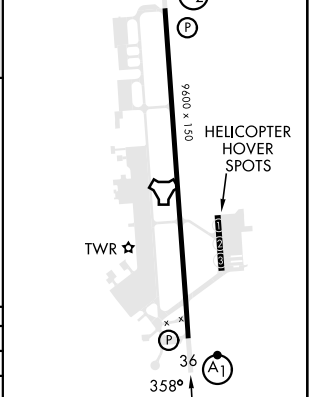
HURLBURT FLD (KHRT)

DME or RADAR required for LOC.	ALSIF-1 <b>A1</b>	MISSED APPROACH: Climb to 1800 on HRT TACAN R-360 to ORTIZ/11 DME and hold.
--------------------------------	----------------------	---

ATIS <b>134.475 360.675</b>	EGLIN APP CON <b>125.1 281.45</b> (271°-089°) <b>132.1 360.6</b> (090°-270°)	TOWER <b>126.5 351.675</b>	GND CON <b>123.975 275.8</b>
--------------------------------	--	-------------------------------	---------------------------------



ELEV 38	TDZE 37
HRL Rwy 18-36	



CATEGORY	A	B	C	D	E
S-ILS 36*	237/24		200	(200-1/2)	
S-LOC 36**	360/24	323 (400-1/2)	360/40		323 (400-3/4)
CIRCLING	640-1	602 (700-1)	640-1 3/4 602 (700-1 3/4)	640-2 602 (700-2)	880-3 842 (900-3)

FAF to MAP 3.9 NM					
Knots	60	90	120	150	180
Min:Sec	3:54	2:36	1:57	1:34	1:18

# ILS or LOC RWY 36

SE-3, 20 FEB 2025 to 20 MAR 2025

SE-3, 20 FEB 2025 to 20 MAR 2025