

# HI-TACAN Z RWY 7R

TACAN NPA Chan 119	APCH CRS 059°	Rwy Idg 8000	TDZE 25	Arprt Elev 28
-----------------------	------------------	-----------------	------------	------------------

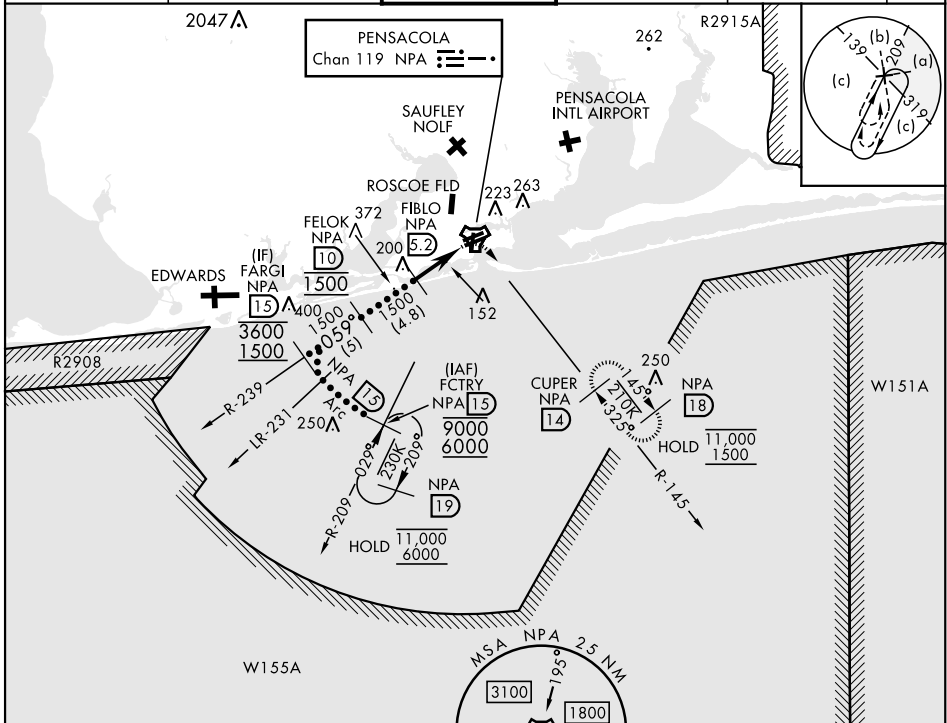
[USN]

PENSACOLA NAS (FORREST SHERMAN FLD) (KNPA)

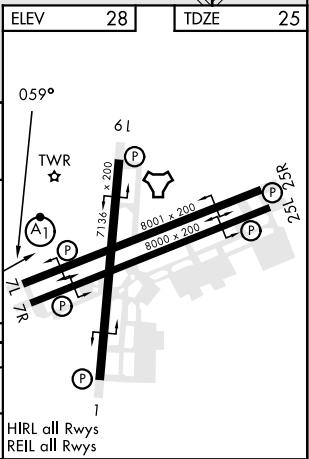
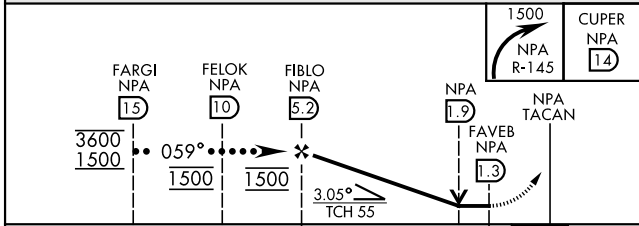
RADAR required

MISSED APPROACH: Climbing right turn to 1500 via NPA TACAN R-145 to CUPER and hold.

ATIS 124.35 266.8	PENSACOLA APP CON 120.65 270.8	SHERMAN TOWER 120.7 340.2	GND CON 121.7 336.4	CLNC DEL 134.1 268.7	ASR/ PAR
----------------------	-----------------------------------	------------------------------	------------------------	-------------------------	-------------



ELEV	28	TDZE	25
EMERG SAFE ALT 100 NM 3100			



CATEGORY	C	D	E
S-7R	440-1½	415 (500-1½)	
CIRCLING	540-1½ 512 (600-1½)	580-2	552 (600-2)

# HI-TACAN Z RWY 7R

SE-3, 20 FEB 2025 to 20 MAR 2025

SE-3, 20 FEB 2025 to 20 MAR 2025