

PENSACOLA, FLORIDA

ILS or RNAV (GPS) Y RWY 7L

LOC/DME I-NPA 109.3 Chan 30	APCH CRS 069°	Rwy Idg TDZE Arprt Elev 8001 23 28
---	-------------------------	--

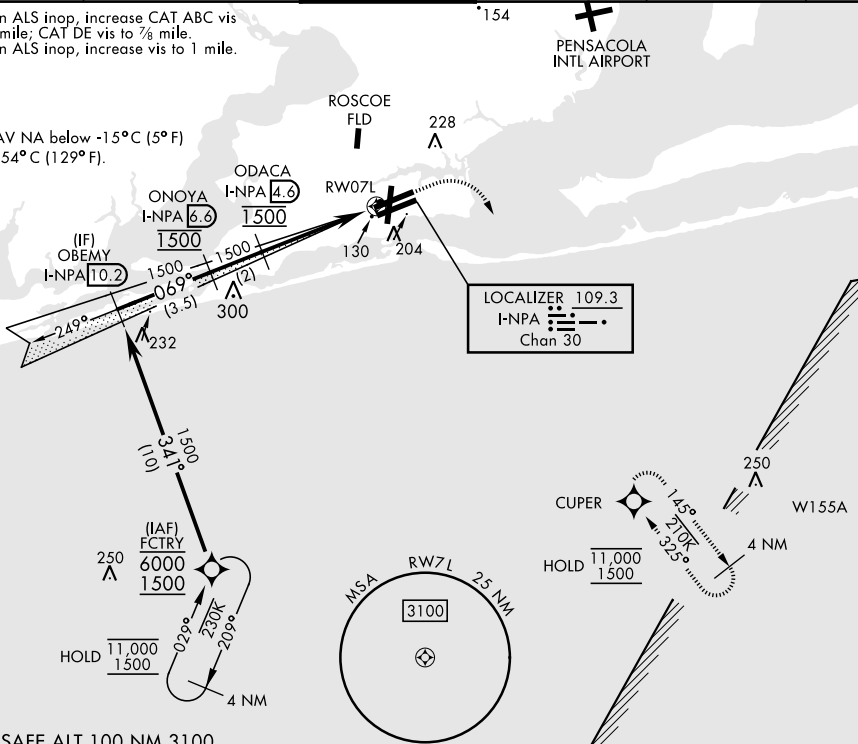
[USN]

PENSACOLA NAS (FORREST SHERMAN FLD) (KNPA)

RNP APCH. RNAV1 - GPS for ILS procedure.		ALSF-1 		MISSED APPROACH: Climb to 600, then climbing right turn to 1500 direct CUPER and hold.	
RADAR required					
<p>▼ * When ALS inop, increase vis to 3/4 mile.</p>					
ATIS 124.35 266.8	APP CON 120.65 270.8	SHERMAN TOWER 120.7 340.2	GND CON 121.7 336.4	CLNC DEL 134.1 266.7	ASR/PAR

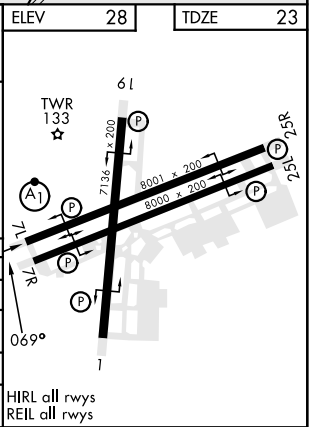
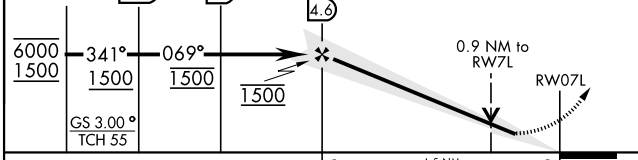
**When ALS inop, increase CAT ABC vis to 3/4 mile; CAT DE vis to 7/8 mile.
*** When ALS inop, increase vis to 1 mile.

Baro VNAV NA below -15°C (5°F) or above 54°C (129°F).



EMERG SAFE ALT 100 NM 3100

FCTRY	OBEMY I-NPA 10.2	ONOYA I-NPA 6.6	ODACA I-NPA 4.6	600	1500	CUPER	ELEV 28	TDZE 23
-------	------------------	-----------------	-----------------	-----	------	-------	---------	---------



CATEGORY	A	B	C	D	E
S-ILS 7L *	223-1/2		200	(200-1/2)	
LNAV/VNAV DA**	274-1/2	251 (300-1/2)	280-1/2	291-1/2	295-1/2
			257 (300-1/2)	268 (300-1/2)	272 (300-1/2)
LNAV MDA***	380-1/2		380-5/8		357 (400-5/8)
			540-1 1/2	600-2	640-2 1/4
C CIRCLING	520-1	492 (500-1)	512 (600-1 1/2)	572 (600-2)	612 (700-2 1/4)

PENSACOLA, FLORIDA
Amdt 5 11JUL24

30°21'N-87°19'W

PENSACOLA NAS (FORREST SHERMAN FLD) (KNPA)

ILS or RNAV (GPS) Y RWY 7L

SE-3, 20 FEB 2025 to 20 MAR 2025

SE-3, 20 FEB 2025 to 20 MAR 2025