

PENSACOLA, FLORIDA

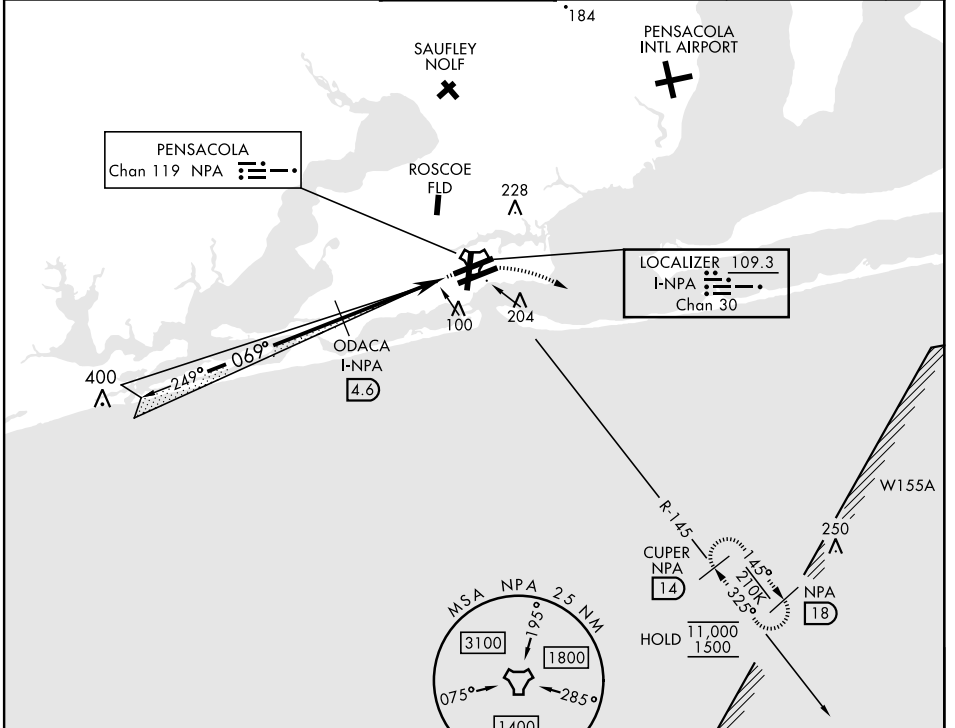
ILS Z or LOC Z RWY 7L

LOC/DME I-NPA 109.3 Chan 30	APCH CRS 069°	Rwy Ldg TDZE Arprt Elev 8001 23 28
---	-------------------------	--

[USN] PENSACOLA NAS (FORREST SHERMAN FLD) (KNPA)

RADAR, TACAN, and DME required	ALS-F1 (A1)	MISSED APPROACH: Climb to 600. Then climbing right turn to 1500 via NPA R-145 to CUPER and hold.
--------------------------------	----------------	--

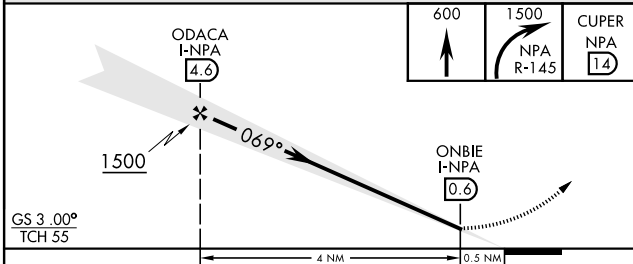
ATIS 124.35 266.8	APP CON 120.65 270.8	SHERMAN TOWER 120.7 340.2	GND CON 121.7 336.4	CLNC DEL 134.1 268.7	ASR/ PAR
-----------------------------	--------------------------------	-------------------------------------	-------------------------------	--------------------------------	-------------



SE-3, 20 FEB 2025 to 20 MAR 2025

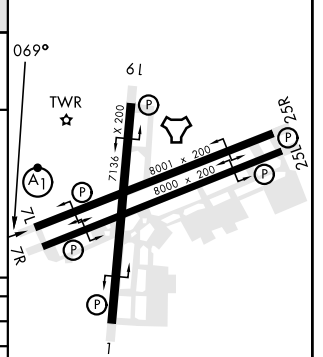
SE-3, 20 FEB 2025 to 20 MAR 2025

EMERG SAFE ALT 100 NM 3100



GS 3.00° TCH 55	4 NM					0.5 NM
CATEGORY	A	B	C	D	E	
S-ILS 7L*		223-½	200	(200-½)		
S-LOC 7L**		360-½	337	(400-½)		
CIRCLING	520-1	492 (500-1)	540-1½ 512 (600-1½)	600-2 572 (600-2)	640-2¼ 612 (700-2¼)	HIRL all rwys REIL all rwys

ELEV	28	TDZE	23
------	----	------	----



PENSACOLA, FLORIDA

30° 21' N-87° 19' W

PENSACOLA NAS (FORREST SHERMAN FLD) (KNPA)

Amdt 4 18APR24

ILS Z or LOC Z RWY 7L