

PENSACOLA, FLORIDA

# RNAV (GPS) RWY 1

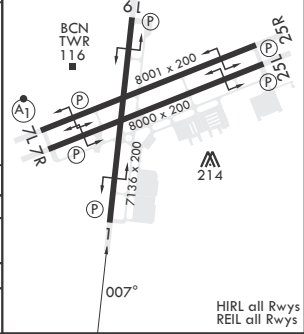
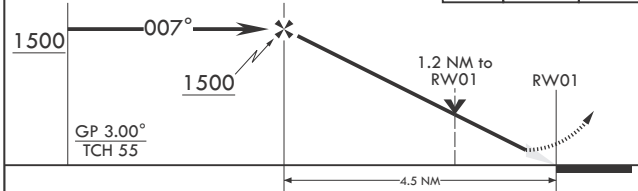
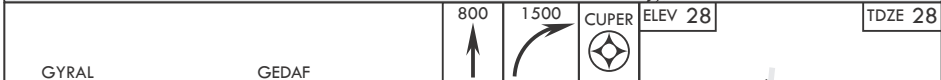
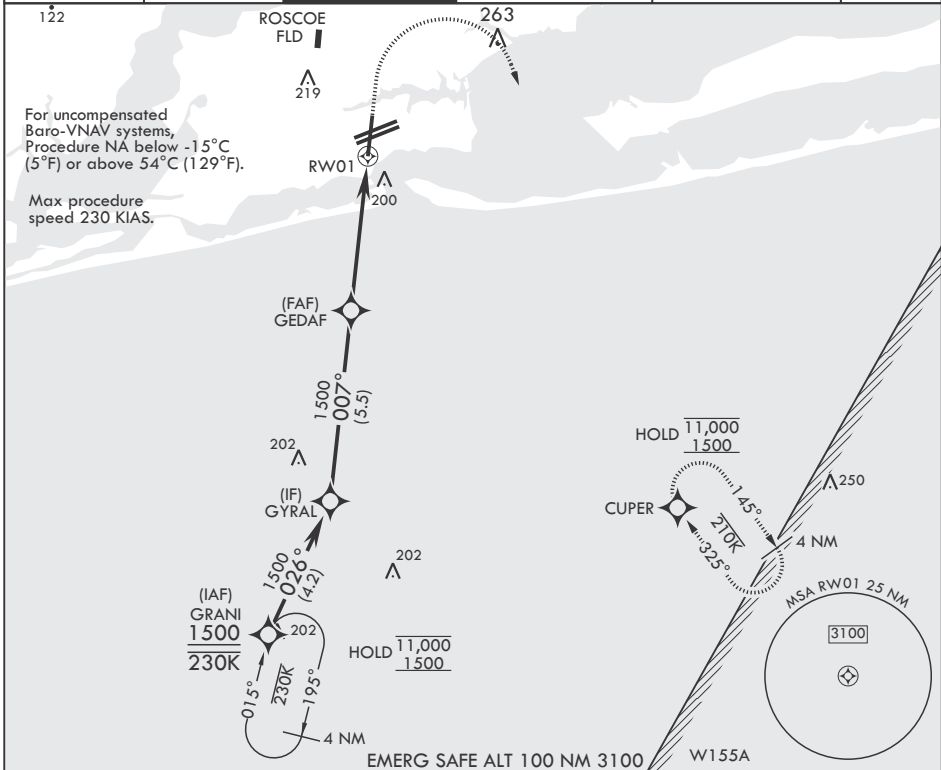
- (USN)

PENSACOLA NAS (FORREST SHERMAN FLD) (KNPA)

APCH CRS	Rwy Idg	7136
007°	TDZE	28
	Arprt Elev	28

RNP APCH	MISSED APPROACH: Climb to 800 then climbing right turn to 1500 direct CUPER and hold.
RADAR required	

ATIS 124.35 266.8	APP CON 120.65 270.8	SHERMAN TOWER 120.7 340.2	SHERMAN GND CON 121.7 336.4	SHERMAN CLNC DEL 134.1 268.7	ASR/PAR
----------------------	-------------------------	------------------------------	--------------------------------	---------------------------------	---------



CATEGORY	A	B	C	D
LNAV/VNAV DA	331-7/8 303 (400-7/8)	342-7/8 314 (400-7/8)	350-1 322 (400-1)	361-1 333 (400-1)
LNAV MDA	460-1	432 (500-1)	460-1 1/4	432 (500-1 1/4)
<b>C</b> CIRCLING	520-1	492 (500-1)	540-1 1/2 512 (600-1 1/2)	580-2 552 (600-2)

PENSACOLA, FLORIDA

30°21'N - 87°19'W PENSACOLA NAS (FORREST SHERMAN FLD) (KNPA)

Amdt 4 02DEC21

# RNAV (GPS) RWY 1

SE-3, 20 FEB 2025 to 20 MAR 2025

SE-3, 20 FEB 2025 to 20 MAR 2025