

PENSACOLA, FLORIDA

RNAV (GPS) RWY 19

- (USN)

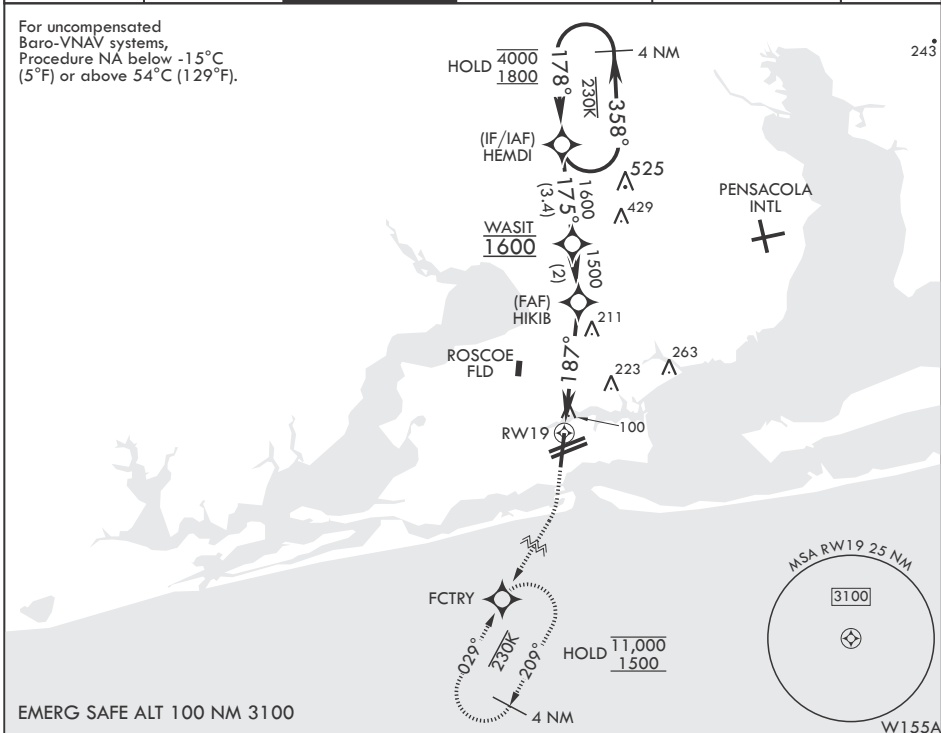
PENSACOLA NAS (FORREST SHERMAN FLD) (KNPA)

APCH CRS	Rwy Idg	7136
187°	TDZE	22
	Arprt Elev	28

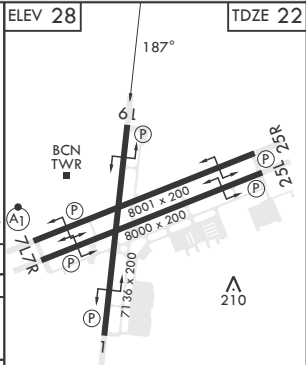
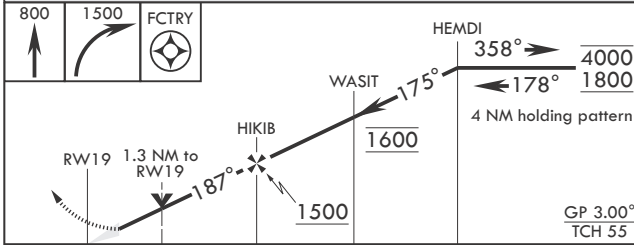
RNP APCH	MISSED APPROACH: Climb to 800 then climbing right turn to 1500 direct FCTRY and hold.
RADAR required	

ATIS	APP CON	SHERMAN TOWER	SHERMAN GND CON	SHERMAN CLNC DEL	ASR/PAR
124.35 266.8	120.65 270.8	120.7 340.2	121.7 336.4	134.1 268.7	

For uncompensated Baro-VNAV systems, Procedure NA below -15°C (5°F) or above 54°C (129°F).



EMERG SAFE ALT 100 NM 3100



CATEGORY	A	B	C	D	E
LNAV/VNAV DA	281-3/4 259 (300-3/4)	292-7/8 270 (300-7/8)	300-7/8 278 (300-7/8)	311-7/8	289 (300-7/8)
LNAV MDA	500-1	478 (500-1)	500-1 1/2	478	(500-1 1/2)
C CIRCLING	520-1	492 (500-1)	540-1 1/2 512 (600-1 1/2)	580-2	552 (600-2)

HIRL all Rwys
REIL all Rwys

PENSACOLA, FLORIDA

30°21'N - 87°19'W PENSACOLA NAS (FORREST SHERMAN FLD) (KNPA)

Amdt 5 02DEC21

RNAV (GPS) RWY 19

SE-3, 20 FEB 2025 to 20 MAR 2025

SE-3, 20 FEB 2025 to 20 MAR 2025