

RNAV (GPS) RWY 25L

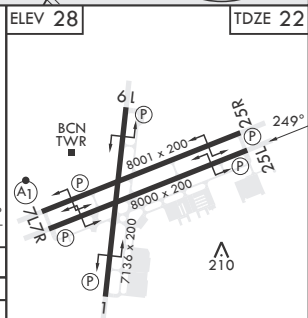
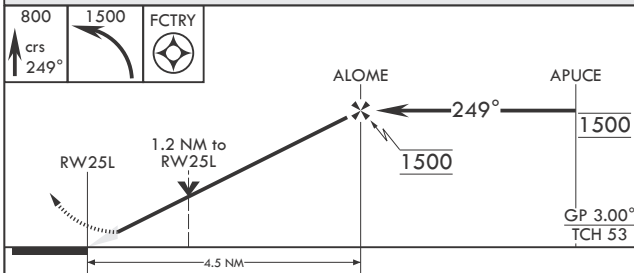
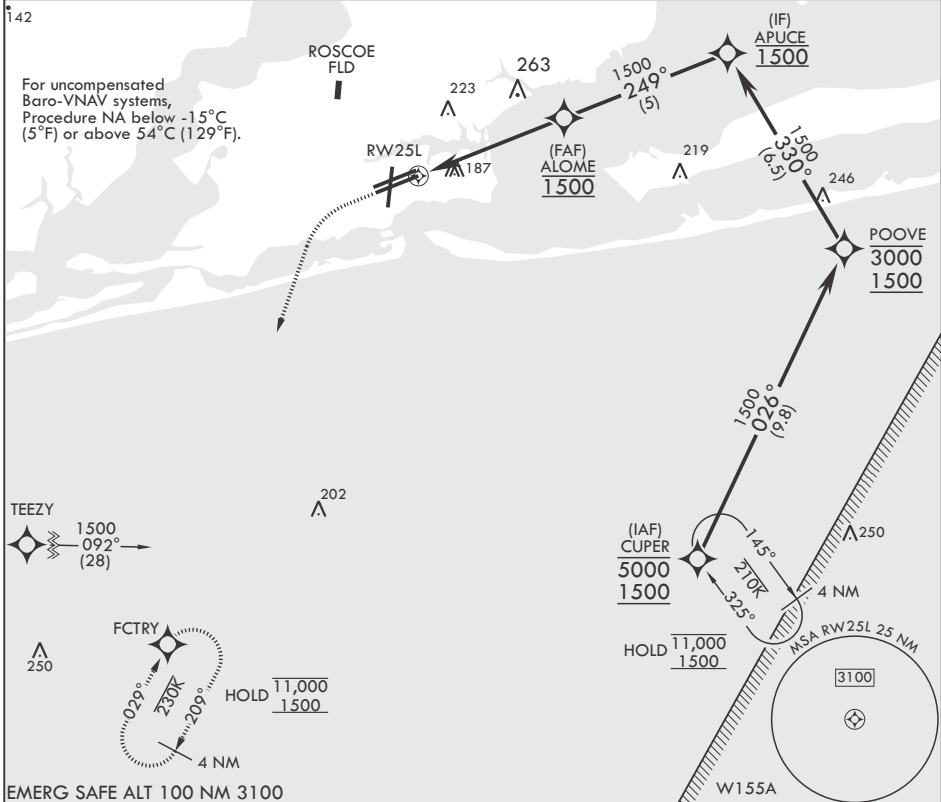
APCH CRS	Rwy Idg	8000
249°	TDZE	22
	Arprt Elev	28

-(USN)

PENSACOLA NAS (FORREST SHERMAN FLD) (KNPA)

RNP APCH	MISSED APPROACH: Climb to 800 then climbing left turn to 1500 direct FCTRY and hold.				
----------	--	--	--	--	--

ATIS	APP CON	SHERMAN TOWER	SHERMAN GND CON	SHERMAN CLNC DEL	ASR/PAR
124.35 266.8	120.65 270.8	120.7 340.2	121.7 336.4	134.1 268.7	



CATEGORY	A		B		C		D		
LNAV/VNAV DA	440-1½		418		440-1½		(500-1½)		
LNAV MDA	440-1	418	(500-1)		440-1½	418	(500-1½)		
CIRCLING	520-1	492	(500-1)		540-1½	512	(600-1½)		
					580-2	552		(600-2)	

HIRL all Rwys
REIL all Rwys

RNAV (GPS) RWY 25L

SE-3, 20 FEB 2025 to 20 MAR 2025

SE-3, 20 FEB 2025 to 20 MAR 2025