

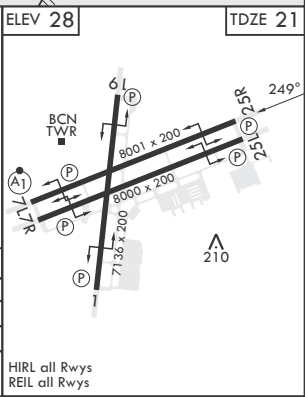
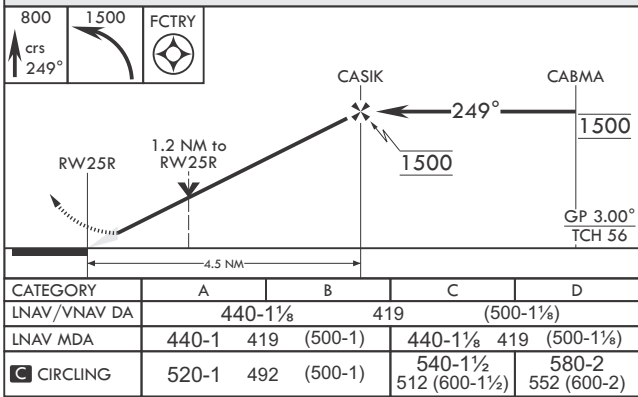
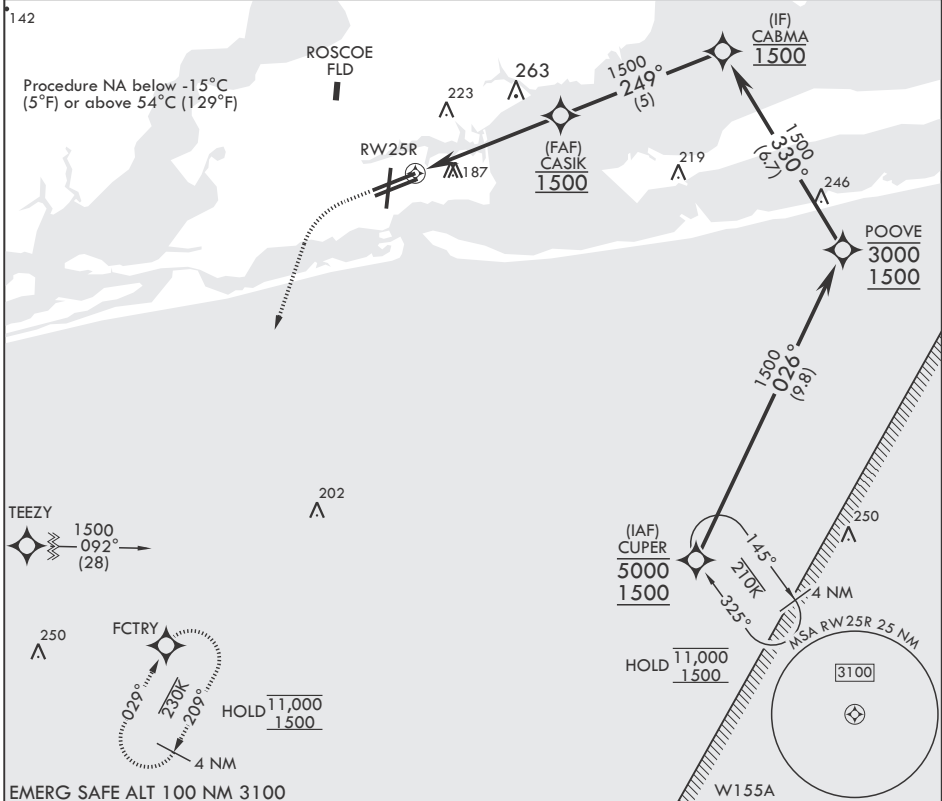
APCH CRS <b>249°</b>	Rwy Idg <b>8001</b>
	TDZE <b>21</b>
	Arprt Elev <b>28</b>

-(USN)

PENSACOLA NAS (FORREST SHERMAN FLD) (KNPA)

RNP APCH	MISSED APPROACH: Climb to 800 then climbing left turn to 1500 direct FCTRY and hold.				
----------	--	--	--	--	--

ATIS <b>124.35 266.8</b>	APP CON <b>120.65 270.8</b>	SHERMAN TOWER <b>120.7 340.2</b>	SHERMAN GND CON <b>121.7 336.4</b>	SHERMAN CLNC DEL <b>134.1 268.7</b>	ASR/PAR
-----------------------------	--------------------------------	-------------------------------------	---------------------------------------	--	---------



CATEGORY	A	B	C	D
LNAV/VNAV DA	440-1 1/8	419	(500-1 1/8)	
LNAV MDA	440-1	419 (500-1)	440-1 1/8	419 (500-1 1/8)
CIRCLING	520-1	492 (500-1)	540-1 1/2 512 (600-1 1/2)	580-2 552 (600-2)

PENSACOLA, FLORIDA 30°21'N - 87°19'W PENSACOLA NAS (FORREST SHERMAN FLD) (KNPA)

Amdt 7 02DEC21 **RNAV (GPS) RWY 25R**

SE-3, 20 FEB 2025 to 20 MAR 2025

SE-3, 20 FEB 2025 to 20 MAR 2025