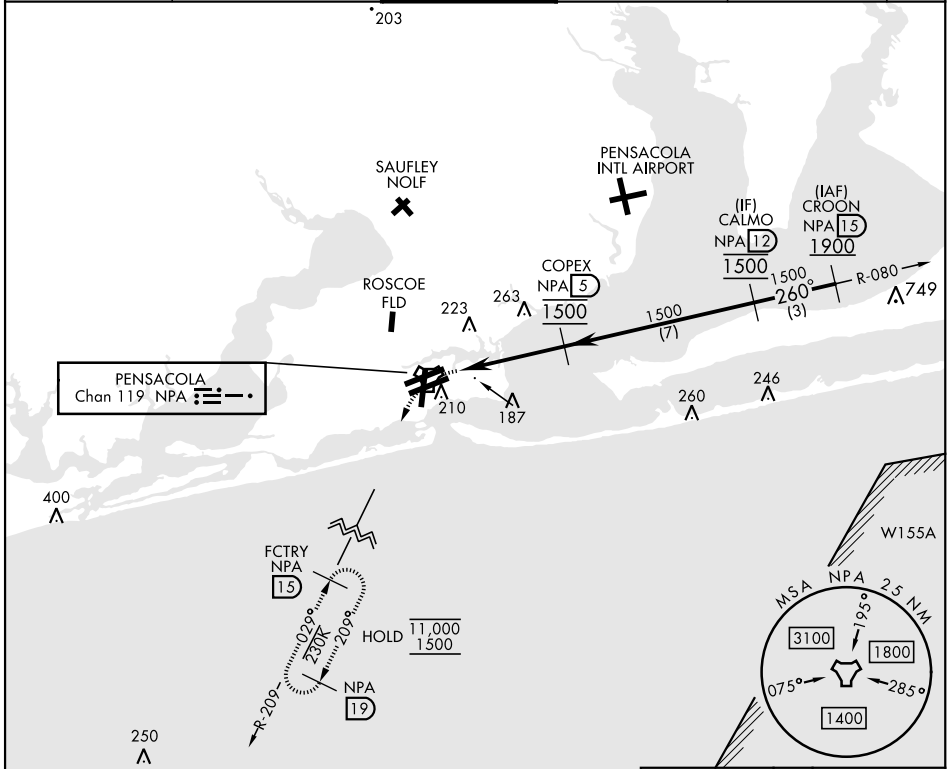


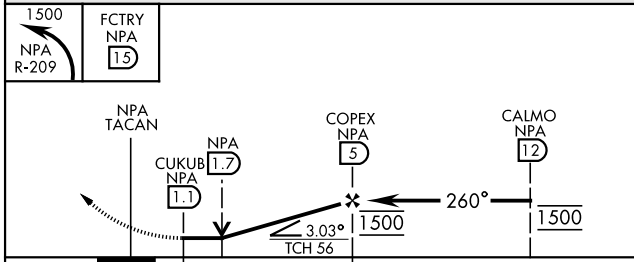
TACAN Y RWY 25R

TACAN NPA Chan 119	APCH CRS 260°	Rwy ldg TDZE Arprt Elev 8000 22 28	[USN]	PENSACOLA NAS (FORREST SHERMAN FLD)	(KNPA)
RADAR required			MISSED APPROACH: Climbing left turn to 1500 via NPA TACAN R-209 to FCTRY and hold.		

ATIS 124.35 266.8	APP CON 120.65 270.8	SHERMAN TOWER 120.7 340.2	GND CON 121.7 336.4	CLNC DEL 134.1 268.7	ASR/PAR
-----------------------------	--------------------------------	-------------------------------------	-------------------------------	--------------------------------	---------

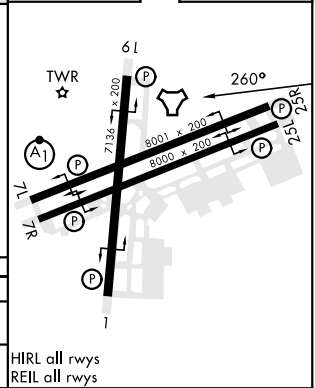


EMERG SAFE ALT 100 NM 3100



CATEGORY	A	B	C	D	E
S-25R	440-1	419 (500-1)	440-1½	419 (500-1½)	
CIRCLING	520-1	492 (500-1)	540-1½	512 (600-1½)	580-2 552 (600-2)

ELEV	28	TDZE	22
------	----	------	----



PENSACOLA, FLORIDA 30° 21' N-87° 19' W PENSACOLA NAS (FORREST SHERMAN FLD) (KNPA)

Orig 02DEC21

TACAN Y RWY 25R

SE-3, 20 FEB 2025 to 20 MAR 2025

SE-3, 20 FEB 2025 to 20 MAR 2025