

PENSACOLA, FLORIDA

TACAN Y RWY 7L

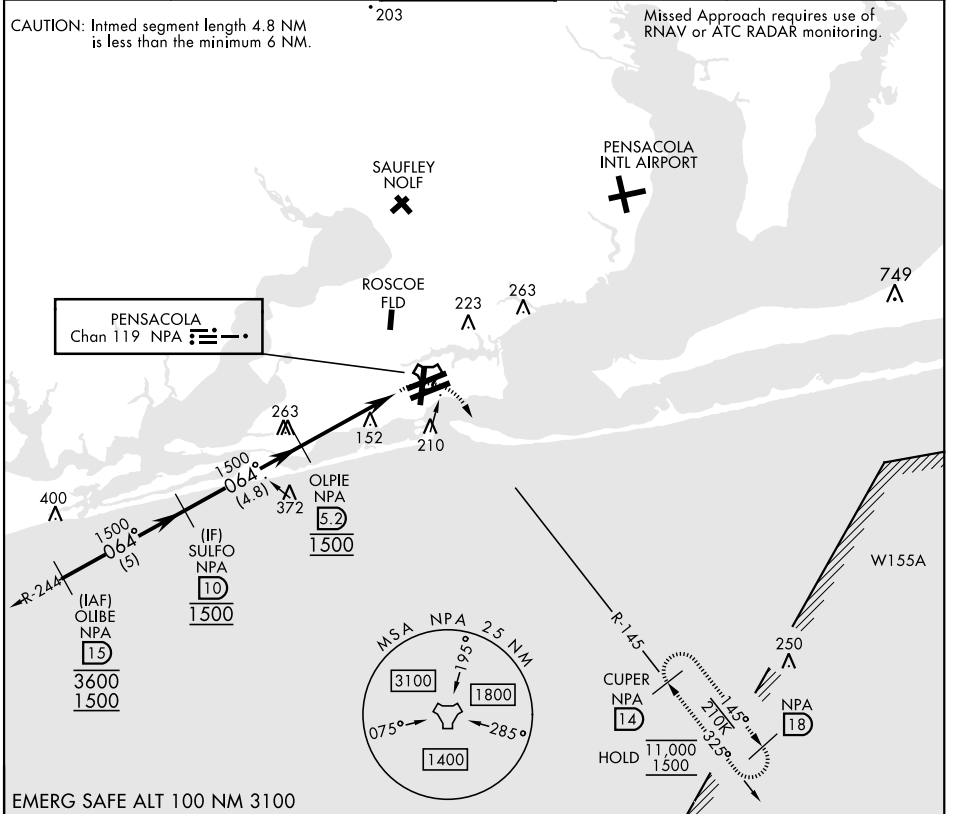
TACAN NPA Chan 119	APCH CRS 064°	Rwy Idg TDZE Arprt Elev	8001 23 28
-----------------------	-------------------------	-------------------------------	---------------------------------------

[USN] PENSACOLA NAS (FORREST SHERMAN FLD) (KNPA)

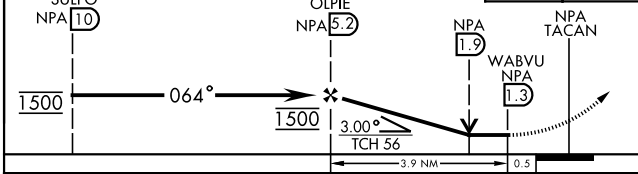
RADAR required
 ▼ * When ALS inop, increase CAT AB vis to 1 mile, CAT CDE vis to 1 1/8 miles.

ALS F-1
 MISSED APPROACH: Climbing right turn to 1500 via NPA TACAN R-145 to CUPER and hold.

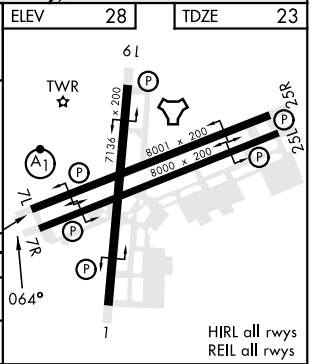
ATIS 124.35 266.8	APP CON 120.65 270.8	SHERMAN TOWER 120.7 340.2	GND CON 121.7 336.4	CLNC DEL 134.1 268.7	ASR/PAR
-----------------------------	--------------------------------	-------------------------------------	-------------------------------	--------------------------------	---------



SULFO NPA 10	OLPIE NPA 5.2	NPA 1.9	NPA TACAN	ELEV 28	TDZE 23
--------------	---------------	---------	-----------	---------	---------



CATEGORY	A	B	C	D	E
S-7L *	440-1/2	417 (500-1/2)	440-3/4	417 (500-3/4)	
CIRCLING	520-1	492 (500-1)	540-1 1/2 512 (600-1 1/2)	580-2	552 (600-2)



PENSACOLA, FLORIDA 30° 21' N-87° 19' W PENSACOLA NAS (FORREST SHERMAN FLD) (KNPA)

Orig 02DEC21

TACAN Y RWY 7L

SE-3, 20 FEB 2025 to 20 MAR 2025

SE-3, 20 FEB 2025 to 20 MAR 2025