

PENSACOLA, FLORIDA

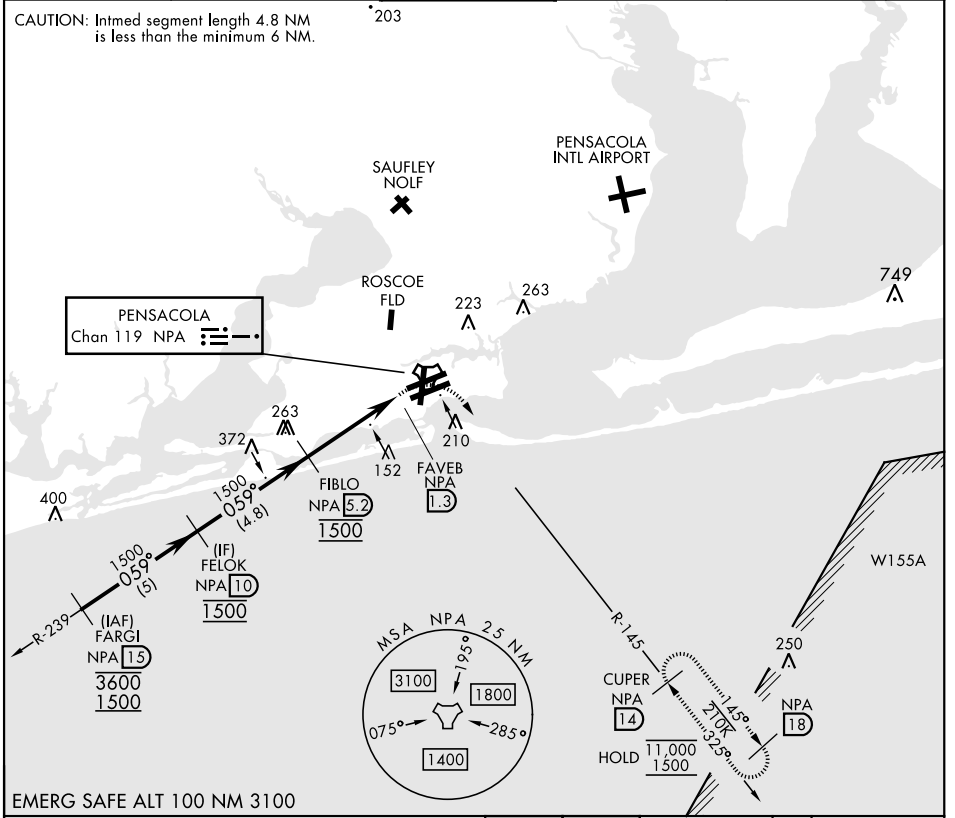
# TACAN Y RWY 7R

TACAN NPA Chan 119	APCH CRS <b>059°</b>	Rwy Idg TDZE Arprt Elev	<b>8001</b> <b>23</b> <b>28</b>	[USN]	PENSACOLA NAS (FORREST SHERMAN FLD) (KNPA)
-----------------------	-------------------------	-------------------------------	---------------------------------------	-------	--

RADAR required ▼	MISSED APPROACH: Climbing right turn to 1500 via NPA TACAN R-145 to CUPER and hold.
---------------------	---

ATIS <b>124.35 266.8</b>	APP CON <b>120.65 270.8</b>	SHERMAN TOWER <b>120.7 340.2</b>	GND CON <b>121.7 336.4</b>	CLNC DEL <b>134.1 268.7</b>	ASR/PAR
-----------------------------	--------------------------------	-------------------------------------	-------------------------------	--------------------------------	---------

CAUTION: Intmed segment length 4.8 NM is less than the minimum 6 NM.



EMERG SAFE ALT 100 NM 3100

FELOK NPA 10		FIBLO NPA 5.2		CUPER NPA 14		ELEV 28	TDZE 23
1500		1500		1500			
059°		3.05°		TCH 55			
		3.9 NM		0.5			
CATEGORY	A	B	C	D	E		
S-7R	440-1	415 (500-1)	440-1½	415 (500-1½)			
CIRCLING	520-1	492 (500-1)	540-1½ 512 (600-1½)	580-2	552 (600-2)		

PENSACOLA, FLORIDA 30° 21' N-87° 19' W PENSACOLA NAS (FORREST SHERMAN FLD) (KNPA)

Orig 02DEC21

# TACAN Y RWY 7R

SE-3, 20 FEB 2025 to 20 MAR 2025

SE-3, 20 FEB 2025 to 20 MAR 2025