

ILS RWY 25 (CAT II)

LITTLE ROCK AFB (KLRF)

LOC I-TYV 109.9	APCH CRS 252°	Rwy Ldg 12,007
		TDZE 301
		Arprt Elev 312

[USAF]

RNP APCH. RNAV1-GPS or RADAR required.

ALSIF-2

MISSED APPROACH: Climb to 900 then climbing right turn to 3000 direct HERCK and hold.

ATIS ★ 119.175 251.1	APP CON 119.5 306.2	TOWER 120.6 269.075	GND CON 132.8 275.8	CLNC DEL 253.5
--------------------------------	-------------------------------	-------------------------------	-------------------------------	--------------------------

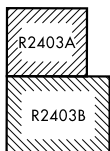
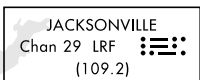
CATEGORY II ILS-SPECIAL AIRCREW & AIRCRAFT CERTIFICATION REQUIRED

ALTERNATE MISSED APPROACH: Climbing to 3000 fly runway heading until 2 DME, then turn right heading 360° expect further clearance from ATC.

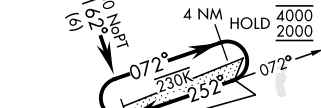
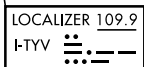
PROCEDURE EFFECTIVE BY NOTAM



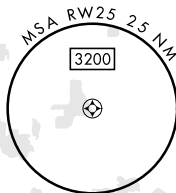
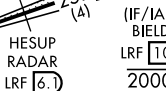
ATC RADAR required for holding above 4000' or greater than 200 KIAS.



CAT E Acft: RADAR required when R-2403 active

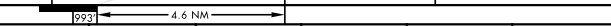
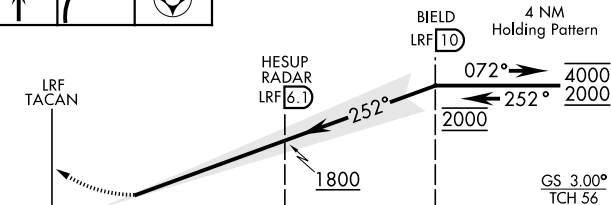
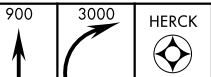


ATC RADAR required for holding above 4000' or greater than 230 KIAS.



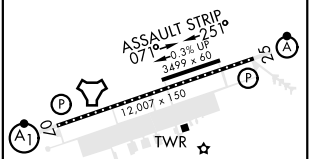
• 823

EMERG SAFE ALT 100 NM 4000



CATEGORY	A	B	C	D	E
S-ILS 25	RA 94/12		100	DA 401	

ELEV	312	TDZE	301
------	-----	------	-----



HIRL Rwy 07-25
TDZL/CL Rwy 25

ILS RWY 25 (CAT II)

SC-1, 20 FEB 2025 to 20 MAR 2025

SC-1, 20 FEB 2025 to 20 MAR 2025