

JACKSONVILLE, ARKANSAS

# RNAV (GPS) RWY 7

LITTLE ROCK AFB (KLRF)

WAAS CH 97202 W07A	APCH CRS 072°	Rwy ldg TDZE Arpt Elev	12,007 310 312
--------------------------	------------------	------------------------------	----------------------

(-USAF)

RNP APCH-GPS

ALSF-1

MISSED APPROACH: Climb to 1000 then climb left turn to 3000 direct HERCK and hold.

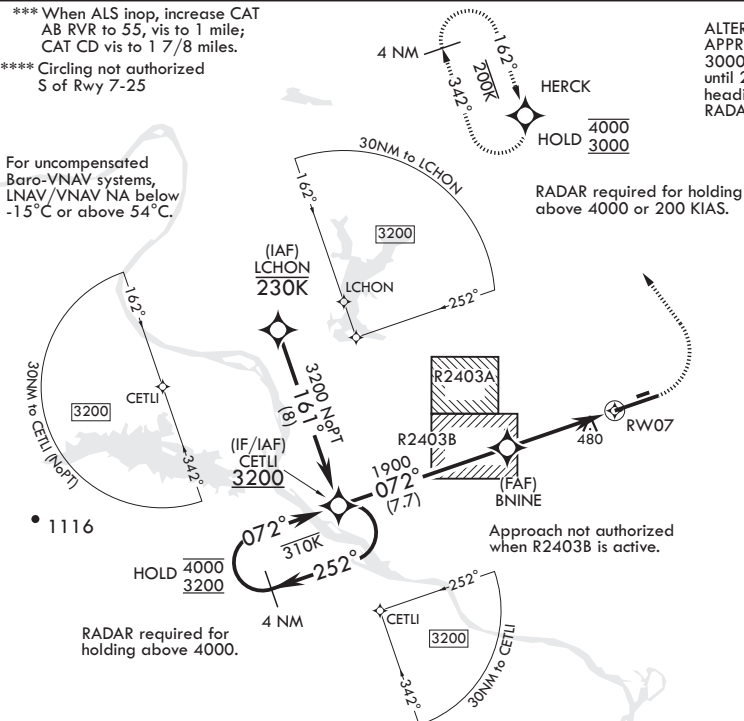
▲ \* When ALS inop, increase RVR to 40, vis to 3/4 mile.  
\*\* When ALS inop, increase vis to 1 3/8 miles.

ATIS* 119.175 251.1	APP CON/DEP CON 119.5 306.2	TOWER 120.6 269.075	GND CON 132.8 275.8	CLNC DEL 253.5
------------------------	--------------------------------	------------------------	------------------------	-------------------

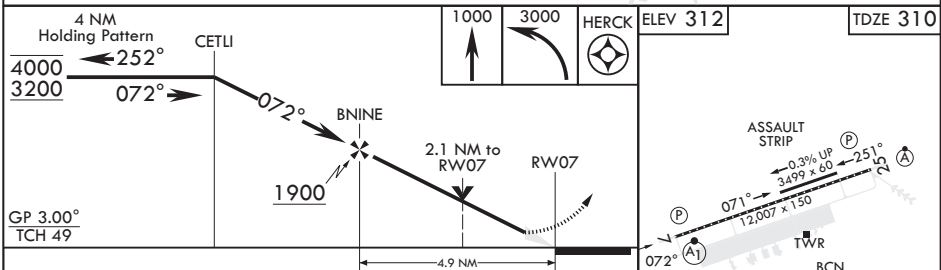
\*\*\* When ALS inop, increase CAT  
AB RVR to 55, vis to 1 mile;  
CAT CD vis to 1 7/8 miles.  
\*\*\*\* Circling not authorized  
S of Rwy 7-25

ALTERNATE MISSED  
APPROACH: Climb to  
3000, fly runway heading  
until 2 DME then left turn  
heading 360°, expect  
RADAR vectors from ATC.

For uncompensated  
Baro-VNAV systems,  
LNAV/VNAV NA below  
-15°C or above 54°C.



EMERG SAFE ALT 100 NM 4000



CATEGORY	A	B	C	D
LPV DA*	510/24	200	(200-1/2)	
LNAV/VNAV DA**	791/50	481	(500-1)	
LNAV MDA***	980/24	670 (700-1/2)	980-1 1/2	670 (700-1 1/2)
◻ CIRCLING****	980-1	668 (700-1)	980-1 1/8	1040-2 1/4
			668 (700-1 1/4)	728 (800-2 1/4)

HIRL Rwy 7-25  
TDZL/CL Rwy 25

JACKSONVILLE, ARKANSAS

34°55'N - 92°09'W

LITTLE ROCK AFB (KLRF)

Orig 11JUL24

# RNAV (GPS) RWY 7

SC-1, 20 FEB 2025 to 20 MAR 2025

SC-1, 20 FEB 2025 to 20 MAR 2025