

# TACAN RWY 25

TACAN LRF Chan <b>29</b>	APCH CRS <b>259°</b>	Rwy ldg TDZE <b>12,007</b> 301 Arprt Elev <b>312</b>
--------------------------	----------------------	--

AL-738 [USAF]

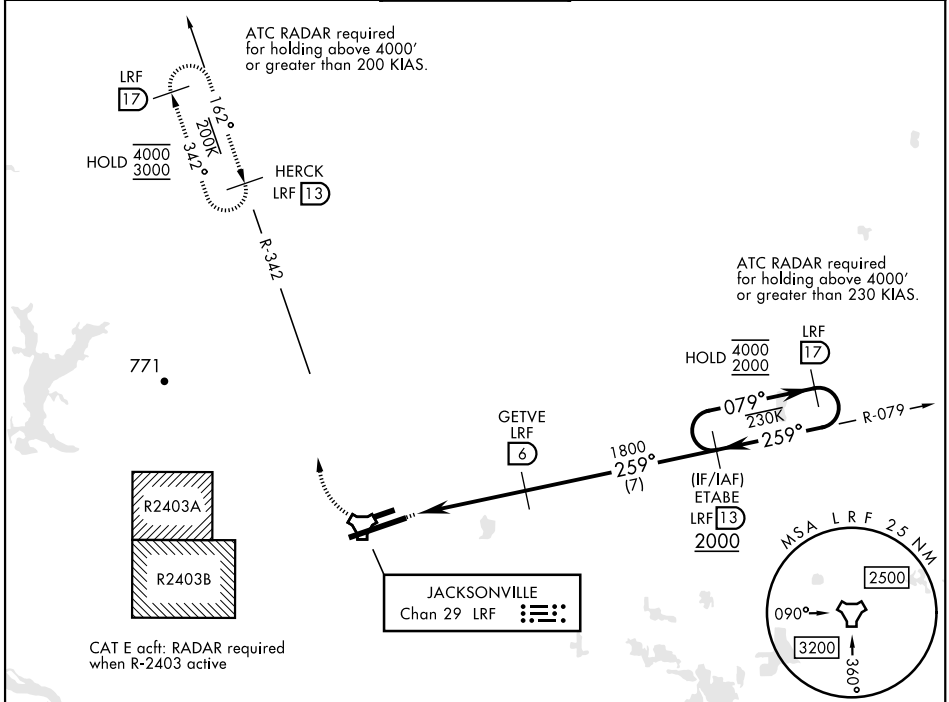
LITTLE ROCK AFB (KLRF)

**ALSF-2** MISSED APPROACH: Climbing right turn to 3000 to intercept LRF R-342 outbound to HERCK and hold as published.

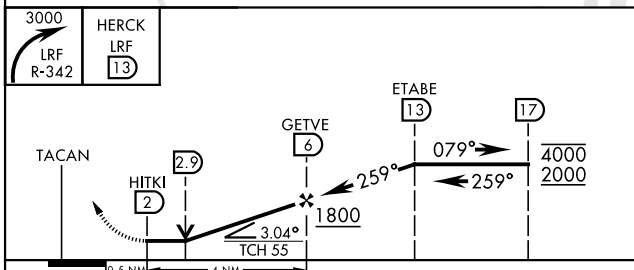
**ALSF-2** ALTERNATE MISSED APPROACH: Climbing to 3000, fly runway heading until LRF 2 DME, then turn right heading 360°, EFC from ATC.

\* When ALS inop, increase CAT AB RVR to 55, vis to 1 mile; CAT CDE vis to 1½ miles.  
\*\* Circling not authorized S of Rwy 07-25.

ATIS ★ <b>119.175 251.1</b>	APP CON <b>119.5 306.2</b>	TOWER <b>120.6 269.075</b>	GND CON <b>132.8 275.8</b>	CLNC DEL <b>253.5</b>
-----------------------------	----------------------------	----------------------------	----------------------------	-----------------------



ELEV 312	TDZE 301
----------	----------



CATEGORY	A	B	C	D	E
S-25 *	800/24 499 (500-½)		800/50 499 (500-1)		
CIRCLING **	800-1 488 (500-1)	920-1 608 (700-1)	920-1¾ 608 (700-1¾)	1040-2¼ 728 (800-2¼)	1040-2½ 728 (800-2½)

HRL Rwy 07-25  
TDZL/CL Rwy 25

# TACAN RWY 25

SC-1, 20 FEB 2025 to 20 MAR 2025

SC-1, 20 FEB 2025 to 20 MAR 2025