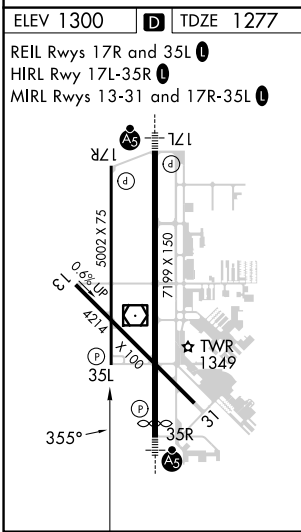
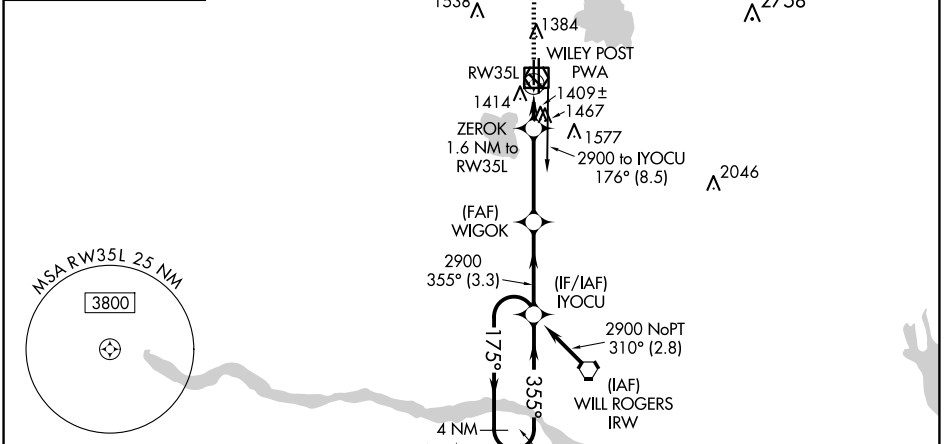
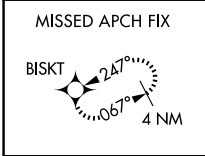


WAAS CH <b>78437</b> <b>W35B</b>	APP CRS <b>355°</b>	Rwy Idg TDZE <b>1277</b> Apt Elev <b>1300</b>
--	------------------------	---

# RNAV (GPS) RWY 35L

WILEY POST (PWA)

RNP APCH-GPS.		MISSED APPROACH: Climb to 1700 then climbing left turn to 3400 direct BISKI and hold.		
ATIS <b>128.725</b>	OKE CITY APP CON <b>124.6 266.8</b>	WILEY POST TOWER ★ <b>126.9(CTAF) 306.9</b>	GND CON <b>121.7</b>	UNICOM <b>122.95</b>



Procedure NA for arrivals on IRW VORTAC airway radials 241 CW 045.

1700	3400	BISKI	WIGOK	IYUCU	4 NM Holding Pattern
		ZEROK 1.6 NM to RW35L	← 355° → 2900	← 175° → 4000	← 355° → 2900
		1.1 NM to RW35L	3.00° TCH 45		
		1.1 NM 0.5 NM	3.4 NM	3.3 NM	
CATEGORY	A	B	C	D	
LP MDA	1660-1	383 (400-1)	1660-1½	383 (400-1½)	
LNAV MDA	1720-1	443 (500-1)	1720-1¾	443 (500-1¾)	
<b>C</b> CIRCLING	1780-1	480 (500-1)	1880-1½	1880-2	
			580 (600-1½)	580 (600-2)	

SC-1, 20 FEB 2025 to 20 MAR 2025

SC-1, 20 FEB 2025 to 20 MAR 2025