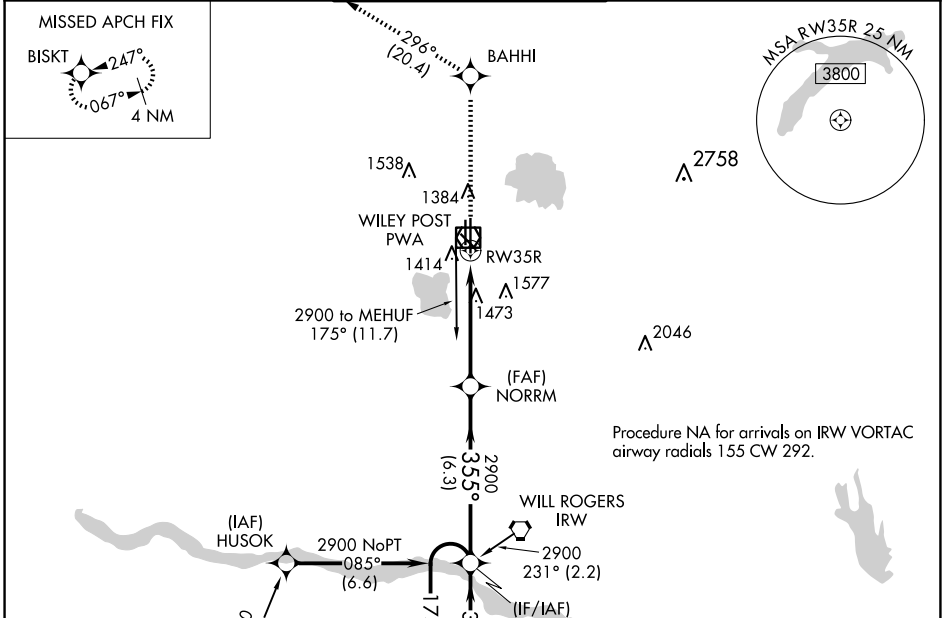


WAAS CH 42716 W35A	APP CRS 355°	Rwy Idg 6844 TDZE 1299 Apt Elev 1300
--	------------------------	---

RNAV (GPS) RWY 35R

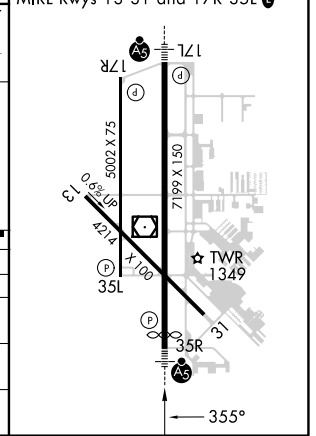
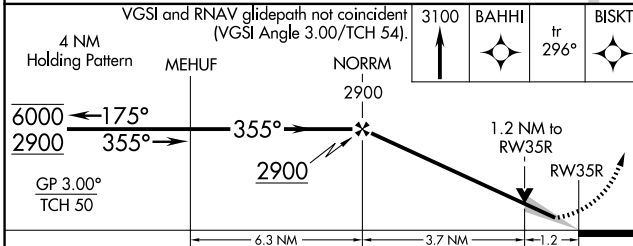
WILEY POST (PWA)

RNP APCH-GPS. For uncompensated Baro-VNAV systems, LNAV/VNAV NA below -13°C or above 54°C. ASR		MALSRL 	MISSED APPROACH: Climb to 3100 direct BAHHI and on track 296° to BISKI and hold.	
ATIS 128.725	OKE CITY APP CON 124.6 266.8	WILEY POST TOWER ★ 126.9 (CTAF) 306.9	GND CON 121.7	UNICOM 122.95



ELEV 1300	TDZE 1299
-----------	-----------

REIL Rwy 17R and 35L
HIRL Rwy 17L-35R
MIRL Rwy 13-31 and 17R-35L



CATEGORY	A	B	C	D
LPV DA	1499-1/2 200 (200-1/2)			
LNAV/VNAV DA	1755-7/8 456 (500-7/8)			
LNAV MDA	1740-1/2 441 (500-1/2)		1740-7/8 441 (500-7/8)	
CIRCLING	1780-1 480 (500-1)		1880-1 1/2 580 (600-1 1/2) 1880-2 580 (600-2)	

SC-1, 20 FEB 2025 to 20 MAR 2025

SC-1, 20 FEB 2025 to 20 MAR 2025