

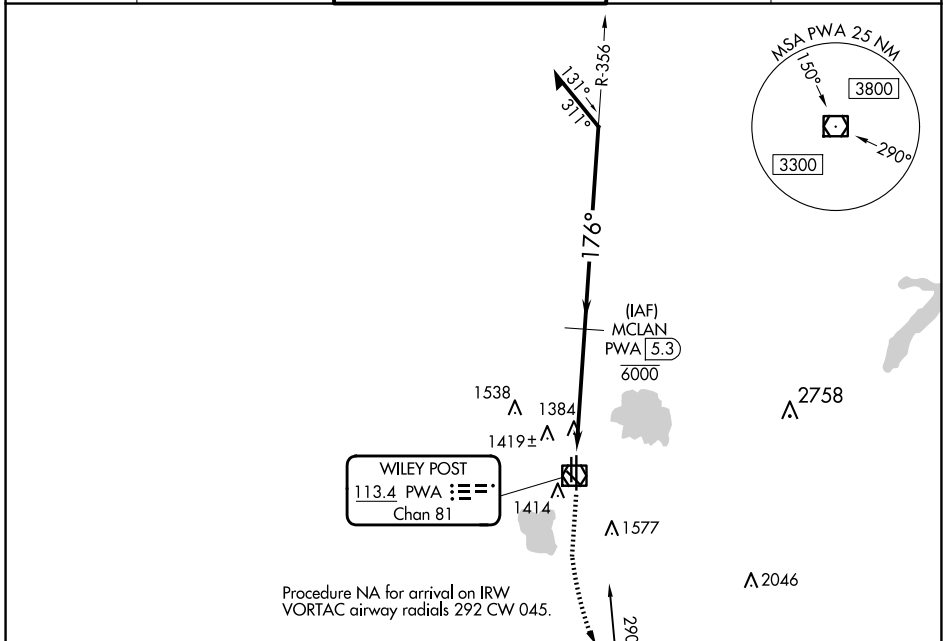
VOR/DME PWA <b>113.4</b> Chan <b>81</b>	APP CRS <b>176°</b>	Rwy Idg TDZE Apt Elev	<b>6844</b> <b>1291</b> <b>1300</b>
---	------------------------	-----------------------------	---

# VOR RWY 17L

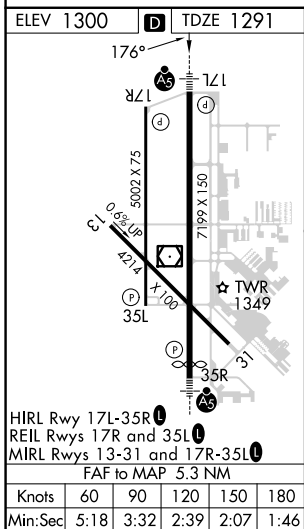
WILEY POST (PWA)

DME required.		MALSR	MISSED APPROACH: Climb to 1700 then climbing left turn to 3000 direct IRW VORTAC and hold.
ASR			

ATIS <b>128.725</b>	OKE CITY APP CON <b>124.6 266.8</b>	WILEY POST TOWER★ <b>126.9(CTAF) 306.9</b>	GND CON <b>121.7</b>	UNICOM <b>122.95</b>
------------------------	--	---	-------------------------	-------------------------



Procedure NA for arrival on IRW VORTAC airway radials 292 CW 045.



ELEV 1300	TDZE 1291		
<p>WILEY POST 113.4 PWA Chan 81</p>		<p>WILL ROGERS 114.1 IRW Chan 88</p>	
1700	3000	IRW	MCLAN PWA 5.3 6000
<p>Remain within 10 NM</p>		<p>2800</p>	
<p>2800</p>		<p>2800</p>	
<p>≤ 3.00° TCH 54</p>		<p>3.5 NM</p>	
CATEGORY	A	B	C D
S-17L	1680-½	389 (400-½)	1680-⅝ 389 (400-⅝)

SC-1, 20 FEB 2025 to 20 MAR 2025

SC-1, 20 FEB 2025 to 20 MAR 2025