

WAAS CH 90503 W19A	APP CRS 190°	Rwy Idg TDZE Apt Elev	6001 19 19
--	------------------------	-----------------------------	---------------------------------------

RNAV (GPS) RWY 19

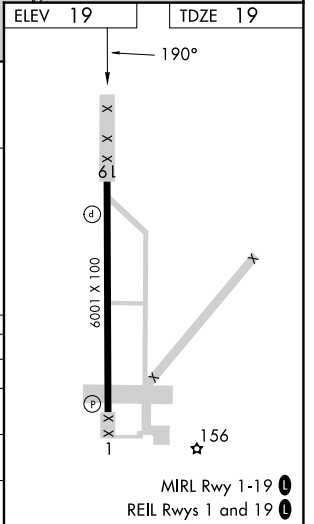
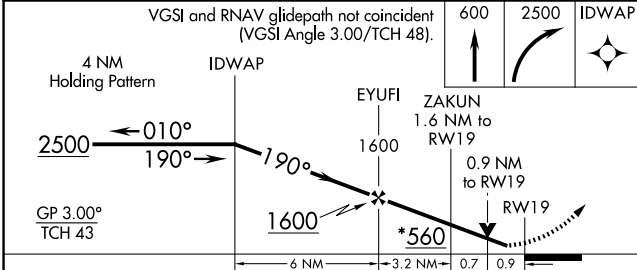
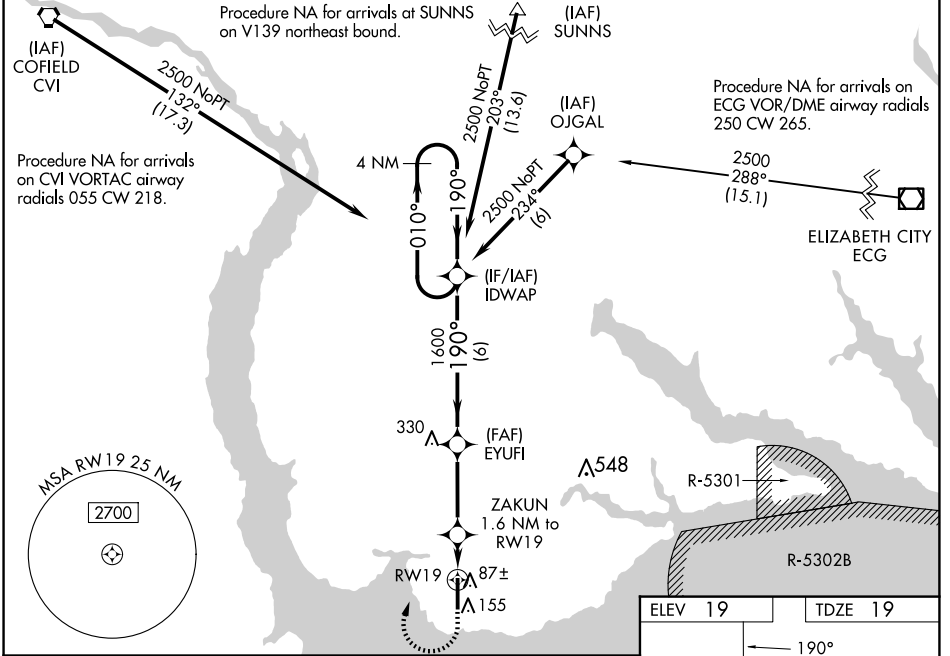
NORTHEASTERN RGNL (E/D/E)

RNP APCH - GPS.

Baro-VNAV NA when using Elizabeth City altimeter setting. For uncompensated Baro-VNAV systems, LNAV/VNAV NA below -15°C or above 43°C. When local altimeter setting not received, use Elizabeth City altimeter setting and increase LPV DA to 276 feet; increase LNAV/VNAV DA to 355 feet and all visibilities ½ SM; increase all MDAs 60 feet and LNAV visibility Cat C/D ¼ SM, and Circling visibility Cat C ¼ SM. VDP NA when using Elizabeth City altimeter setting. Rwy 19 helicopter visibility reduction below ¾ SM NA.

MISSED APPROACH: Climb to 600 then right turn to 2500 direct IDWAP and hold.

AWOS-3 118.275	WASHINGTON CENTER 123.85 279.65	UNICOM 123.0 (CTAF) 0
--------------------------	---	---------------------------------



CATEGORY	A	B	C	D
LPV DA		219-¾	200 (200-¾)	
LNAV/VNAV DA		289- 7/8	270 (300-7/8)	
LNAV MDA		400-1 1/8	381 (400-1 1/8)	
CIRCLING	520-1	501 (600-1)	560-1 1/2 541 (600-1 1/2)	580-2 561 (600-2)

SE-2, 20 FEB 2025 to 20 MAR 2025

SE-2, 20 FEB 2025 to 20 MAR 2025