

DEKAL NINE ARRIVAL

FORT LAUDERDALE, FLORIDA

SE-3, 20 FEB 2025 to 20 MAR 2025

MIAMI APP CON
119.45 290.325
FL D-ATIS
135.0
FYE ATIS
119.85
HWO ATIS
135.475
OPF ATIS
125.9
PMP ATIS
120.55

FORT LAUDERDALE
114.4 FL
Chan 91

POMPAÑO BEACH
AIRPARK
FORT LAUDERDALE
EXEC

ldg KFXE, KELL, KOPF, KHWO, KPMP
FORT LAUDERDALE/
HOLLYWOOD INTL

NORTH
PERRY
MIAMI-OPA LOCKA
EXEC

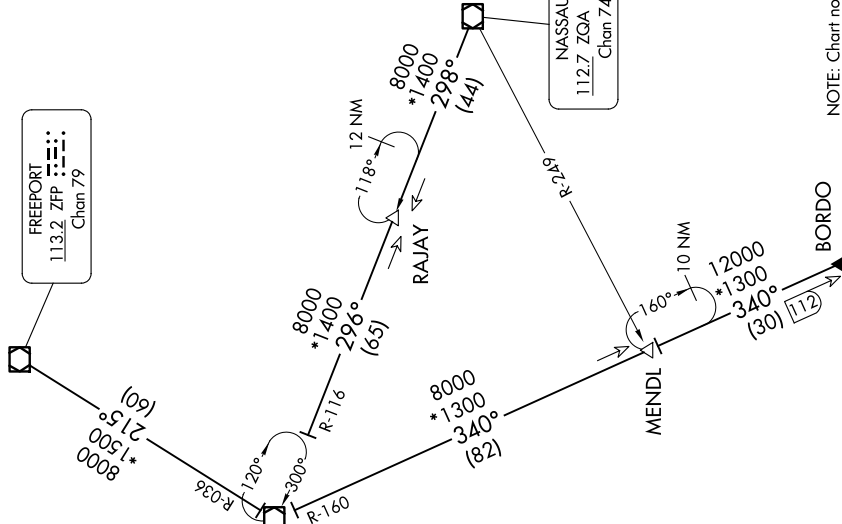


BIMINI
116.7 ZBV
Chan 114

FREEPORT
113.2 ZFP
Chan 79

NASSAU
112.7 ZQA
Chan 74

RADAR required. DME required.



NOTE: Chart not to scale.

ARRIVAL ROUTE DESCRIPTION

BORDO TRANSITION (BORDO.DEKAL9): From over BORDO on ZBV R-160 to ZBV VOR/DME, then on ZBV R-300 to DEKAL. Thence. . .

FREEPORT TRANSITION (ZFP.DEKAL9): From over ZFP VOR/DME on ZFP R-215 and ZBV R-036 to ZBV VOR/DME, then on ZBV R-300 to DEKAL. Thence. . .

NASSAU TRANSITION (ZQA.DEKAL9): From over ZQA VOR/DME on ZQA R-298 to RAJAY, then on ZBV R-116 to ZBV VOR/DME, then on ZBV R-300 to DEKAL. Thence. . .

LANDING ALL AIRPORTS: From DEKAL on FORT LAUDERDALE VOR/DME (FL) R-121 to FL VOR/DME. Expect RADAR vectors to final approach course.

SE-3, 20 FEB 2025 to 20 MAR 2025

DEKAL NINE ARRIVAL

FORT LAUDERDALE, FLORIDA