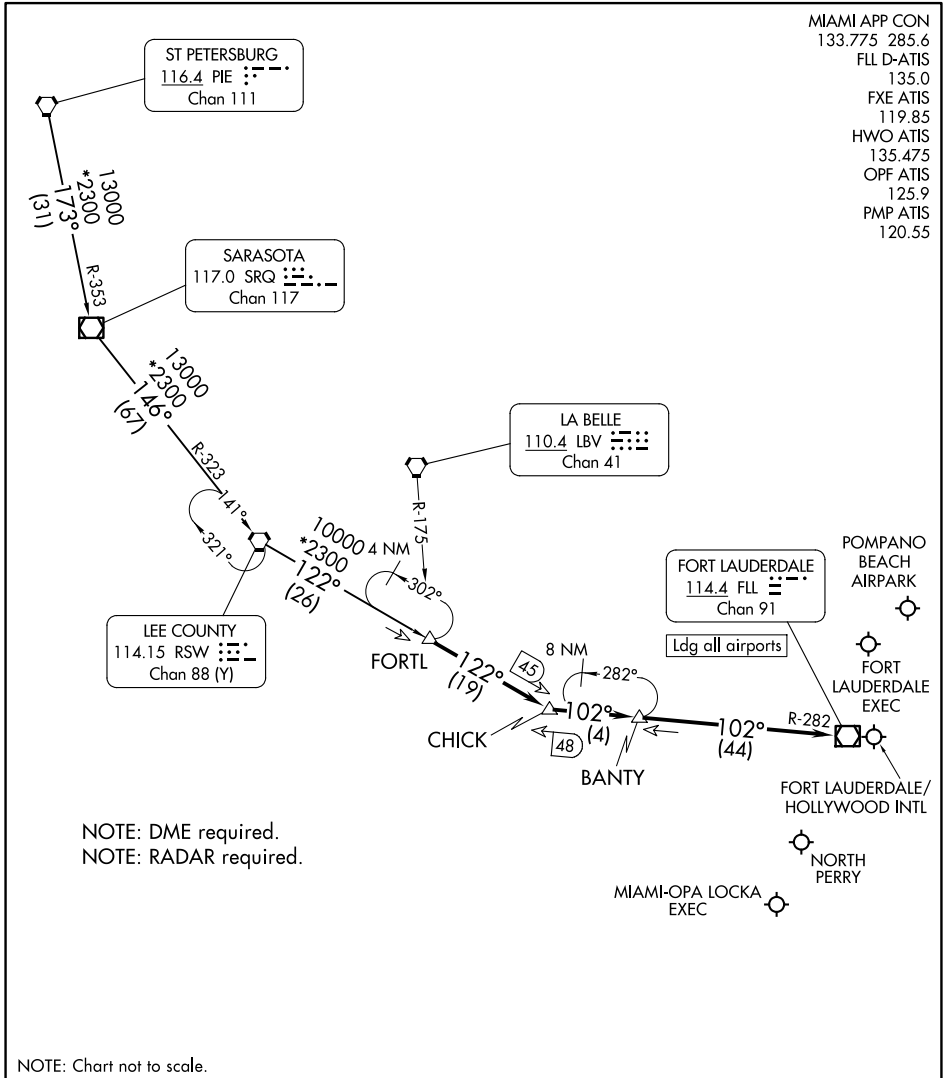


FORTL NINE ARRIVAL

FORT LAUDERDALE, FLORIDA

MIAMI APP CON 133.775 285.6
 FLL D-ATIS 135.0
 FXE ATIS 119.85
 HWO ATIS 135.475
 OPF ATIS 125.9
 PMP ATIS 120.55



NOTE: DME required.
 NOTE: RADAR required.

NOTE: Chart not to scale.

ARRIVAL ROUTE DESCRIPTION

ST PETERSBURG TRANSITION (PIE.FORTL9): From over PIE VORTAC on PIE R-173 and SRQ R-353 to SRQ VOR/DME, then on SRQ R-146 and RSW R-323 to RSW VORTAC, then on RSW R-122 to FORTL. Thence. . . .

SARASOTA TRANSITION (SRQ.FORTL9): From over SRQ VOR/DME on SRQ R-146 and RSW R-323 to RSW VORTAC, then on RSW R-122 to FORTL. Thence. . . .

LANDING ALL AIRPORTS: From FORTL on RSW R-122 to CHICK, then on FORT LAUDERDALE VOR/DME (FLL) R-282 to FLL VOR/DME. Expect RADAR vectors to final approach course.

FORTL NINE ARRIVAL

FORT LAUDERDALE, FLORIDA

SE-3, 20 FEB 2025 to 20 MAR 2025

SE-3, 20 FEB 2025 to 20 MAR 2025