

RNAV 1 - DME/DME/IRU or GPS.
From HEYDR - GPS.
RADAR required.

**TOP ALTITUDE:
4000**

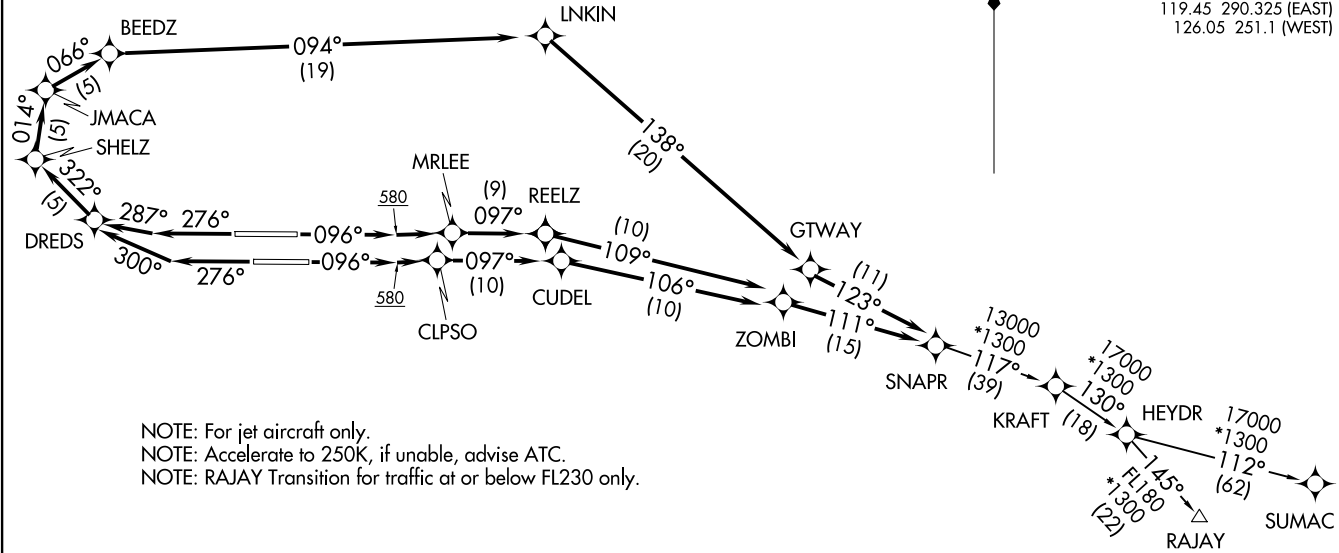
D-ATIS 135.0
CLNC DEL 128.4
CPDLC
GND CON 121.4
FORT LAUDERDALE TOWER 119.3 257.8
MIAMI DEP CON 119.45 290.325 (EAST)
126.05 251.1 (WEST)

SNAPR TWO DEPARTURE (RNAV)
(SNAPR2.SNAPR) 19MAY22

(SNAPR2.SNAPR) 22139
SNAPR TWO DEPARTURE (RNAV)

A1744 (FAA)

FORT LAUDERDALE/HOLLYWOOD INTL (FLL)
FORT LAUDERDALE, FLORIDA



NOTE: For jet aircraft only.
NOTE: Accelerate to 250K, if unable, advise ATC.
NOTE: RAJAY Transition for traffic at or below FL230 only.

TAKEOFF MINIMUMS
Rwys 10L/R, 28L/R: Standard with minimum climb of 500' per NM to 580.

(NARRATIVE ON FOLLOWING PAGE)

NOTE: Chart not to scale.

FORT LAUDERDALE, FLORIDA
FORT LAUDERDALE/HOLLYWOOD INTL (FLL)

SNAPR TWO DEPARTURE (RNAV)



DEPARTURE ROUTE DESCRIPTION SEE ADDITIONAL REQUIREMENTS ON AAUP

TAKEOFF RUNWAY 10L: Climb on heading 096° to 580, then climb direct MRLEE, then on track 097° to REELZ, then on track 109° to ZOMBI, then on track 111° to SNAPR, thence. . . .

TAKEOFF RUNWAY 10R: Climb on heading 096° to 580, then climb direct CLPSO, then on track 097° to CUDEL, then on track 106° to ZOMBI, then on track 111° to SNAPR, thence. . . .

TAKEOFF RUNWAY 28L: Climb on heading 276° to intercept course 300° to DREDS, then on track 322° to SHELZ, then on track 014° to JMACA, then on track 066° to BEEDZ, then on track 094° to LNKIN, then on track 138° to GTWAY, then on track 123° to SNAPR, thence. . . .

TAKEOFF RUNWAY 28R: Climb on heading 276° to intercept course 287° to DREDS, then on track 322° to SHELZ, then on track 014° to JMACA, then on track 066° to BEEDZ, then on track 094° to LNKIN, then on track 138° to GTWAY, then on track 123° to SNAPR, thence. . . .

. . . (transition) maintain 4000. Expect clearance to filed altitude ten minutes after departure.

RAJAY TRANSITION (SNAPR2.RAJAY)

SUMAC TRANSITION (SNAPR2.SUMAC)

SE-3, 20 FEB 2025 to 20 MAR 2025

SE-3, 20 FEB 2025 to 20 MAR 2025