

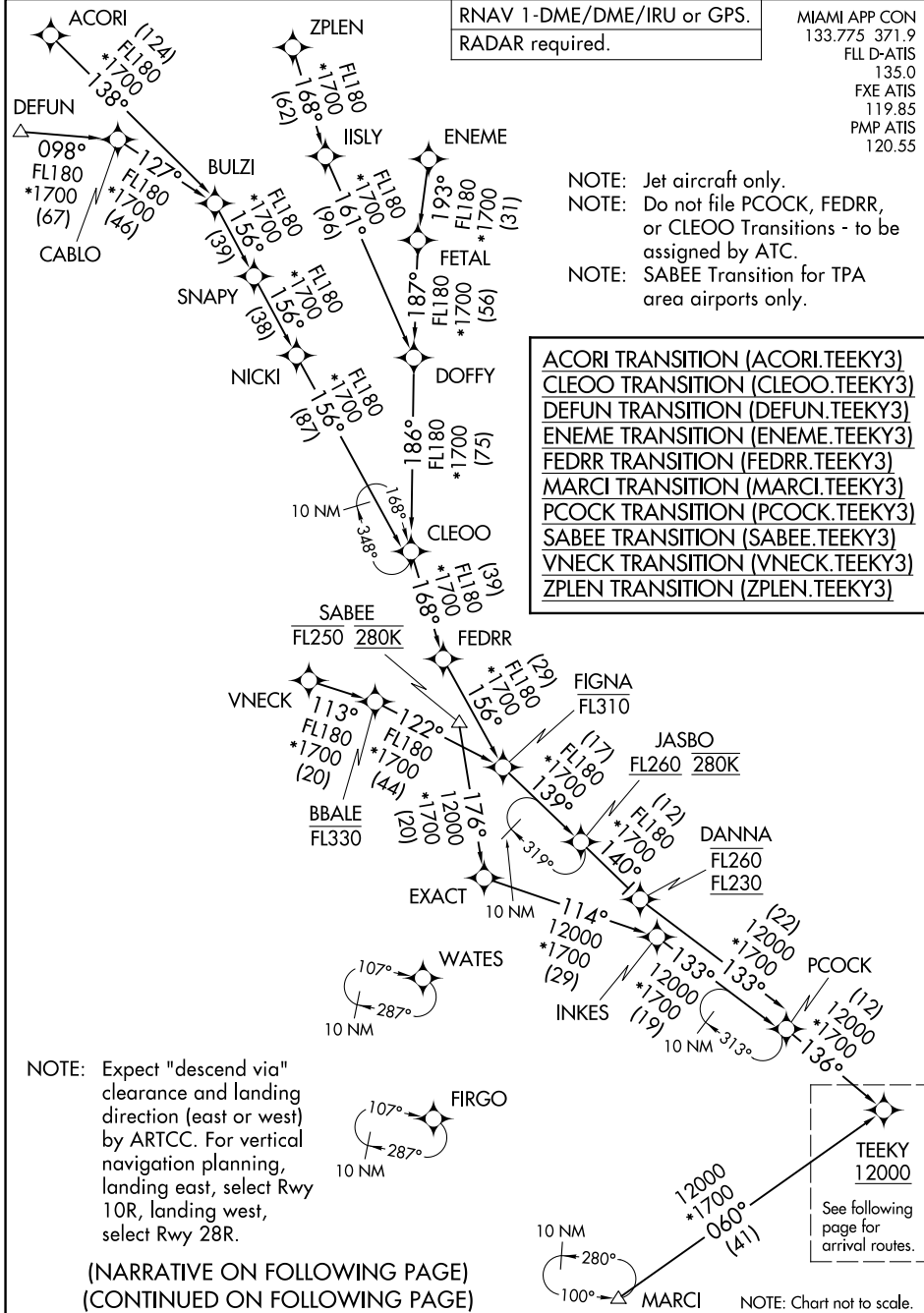
# TEEKY THREE ARRIVAL (RNAV) Transition Routes FORT LAUDERDALE, FLORIDA

RNAV 1-DME/DME/IRU or GPS.  
RADAR required.

MIAMI APP CON  
133.775 371.9  
FL D-ATIS  
135.0  
FXE ATIS  
119.85  
PMP ATIS  
120.55

- NOTE: Jet aircraft only.
- NOTE: Do not file PCOCK, FEDRR, or CLEOO Transitions - to be assigned by ATC.
- NOTE: SABEE Transition for TPA area airports only.

- ACORI TRANSITION (ACORI.TEEKY3)
- CLEOO TRANSITION (CLEOO.TEEKY3)
- DEFUN TRANSITION (DEFUN.TEEKY3)
- ENEME TRANSITION (ENEME.TEEKY3)
- FEDRR TRANSITION (FEDRR.TEEKY3)
- MARCI TRANSITION (MARCI.TEEKY3)
- PCOCK TRANSITION (PCOCK.TEEKY3)
- SABEE TRANSITION (SABEE.TEEKY3)
- VNECK TRANSITION (VNECK.TEEKY3)
- ZPLEN TRANSITION (ZPLEN.TEEKY3)



SE-3, 20 FEB 2025 to 20 MAR 2025

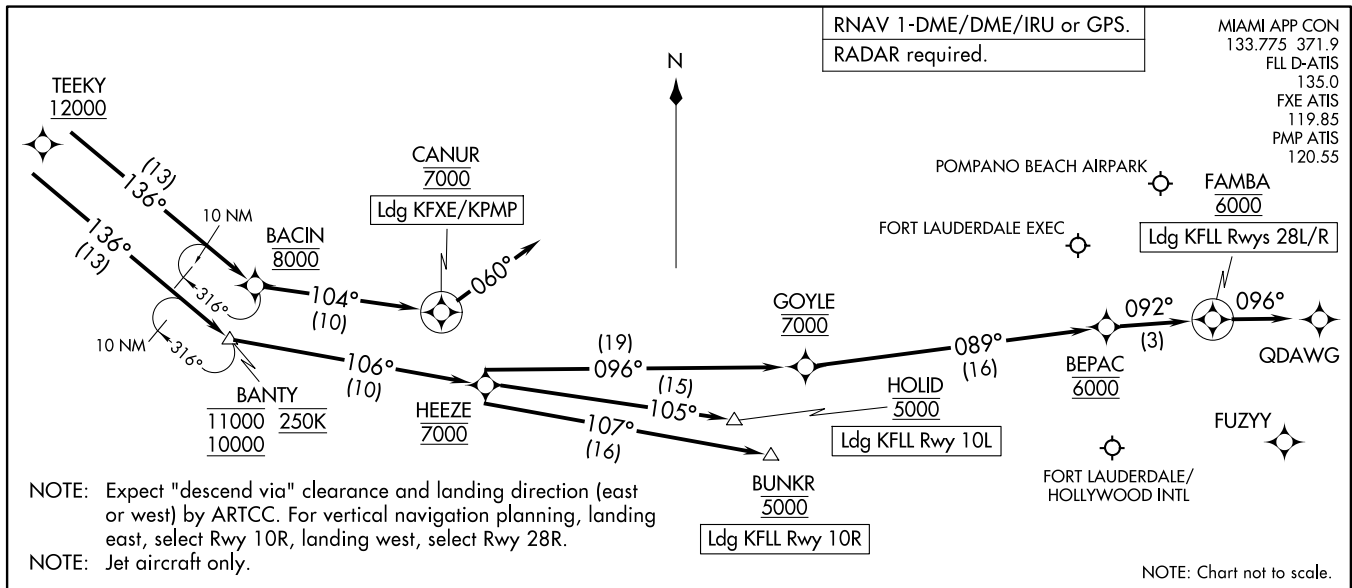
SE-3, 20 FEB 2025 to 20 MAR 2025

(NARRATIVE ON FOLLOWING PAGE)  
(CONTINUED ON FOLLOWING PAGE)

TEEKY THREE ARRIVAL (RNAV)  
(TEEKY, TEEKY3) 03NOV22

Arrival Routes

FORT LAUDERDALE, FLORIDA



NOTE: Expect "descend via" clearance and landing direction (east or west) by ARTCC. For vertical navigation planning, landing east, select Rwy 10R, landing west, select Rwy 28R.  
NOTE: Jet aircraft only.

NOTE: Chart not to scale.

ARRIVAL ROUTE DESCRIPTION

- FLL: From TEEKY on track 136° to cross BANTY between 10000 and 11000 and at 250K, then on track 106° to cross HEEZE at 7000.
- LANDING KFL RUNWAY 10L: From HEEZE on track 105° to cross HOLID at 5000. Expect ILS or LOC Rwy 10L approach.
- LANDING KFL RUNWAY 10R: From HEEZE on track 107° to cross BUNKR at 5000. Expect ILS or LOC Rwy 10R approach.
- LANDING KFL RUNWAYS 28L/R: From HEEZE on track 096° to cross GOYLE at 7000, then on track 089° to cross BEPAC at 6000, then on track 092° to cross FAMBA at 6000, then on track 096°. Expect RADAR vectors to final approach course.
- LANDING KFXE/KPMP: From TEEKY on track 136° to cross BACIN at 8000, then on track 104° to cross CANUR at 7000, then on heading 060°. Expect RADAR vectors to final approach course.

TEEKY, TEEKY3) 22307

Arrival Routes

FORT LAUDERDALE, FLORIDA