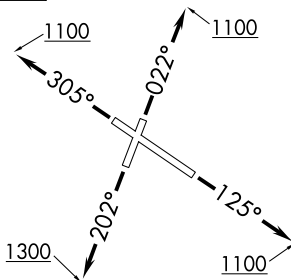


BLOKR SEVEN DEPARTURE (RNAV)

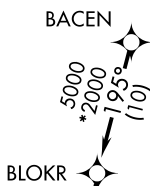
CHICAGO DEP CON
133.1 285.6
ATIS
134.575
GND CON
121.9
GARY TOWER ★
125.6 (CTAF)

RNAV 1 - DME/DME/IRU or GPS.
RADAR required. RADAR required for
non-GPS equipped aircraft.

**TOP ALTITUDE:
3000**

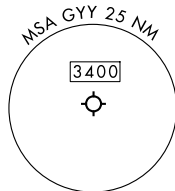


NOTE: Turbojet departures maintain 250K until advised by ATC.
NOTE: ROBERTS Transition: For aircraft inbound to CMI or STL, or as assigned by ATC.



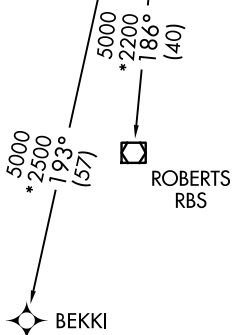
TAKEOFF MINIMUMS:

Rwys 12, 20, 30: Standard.
Rwy 2: Standard with minimum climb of 323' per NM to 900.



EC-2, 20 FEB 2025 to 20 MAR 2025

EC-2, 20 FEB 2025 to 20 MAR 2025



NOTE: Chart not to scale.

DEPARTURE ROUTE DESCRIPTION

TAKEOFF RUNWAY 2: Climb on heading 022° to 1100, then as assigned by ATC, for vectors to BACEN, thence. . . .
TAKEOFF RUNWAY 12: Climb on heading 125° to 1100, then as assigned by ATC, for vectors to BACEN, thence. . . .
TAKEOFF RUNWAY 20: Climb on heading 202° to 1300, then as assigned by ATC, for vectors to BACEN, thence. . . .
TAKEOFF RUNWAY 30: Climb on heading 305° to 1100, then as assigned by ATC, for vectors to BACEN, thence. . . .

. . . .on track 195° to BLOKR, then on (transition). Maintain 3000. Expect filed altitude 10 minutes after departure.

BEKKI TRANSITION (BLOKR7.BEKKI):
ROBERTS TRANSITION (BLOKR7.RBS):