

CHICAGO APP CON
133.1 285.6
GYG ATIS
134.575

(LUCIT.LUCIT3) 24361
LUCIT THREE ARRIVAL (RNAV)

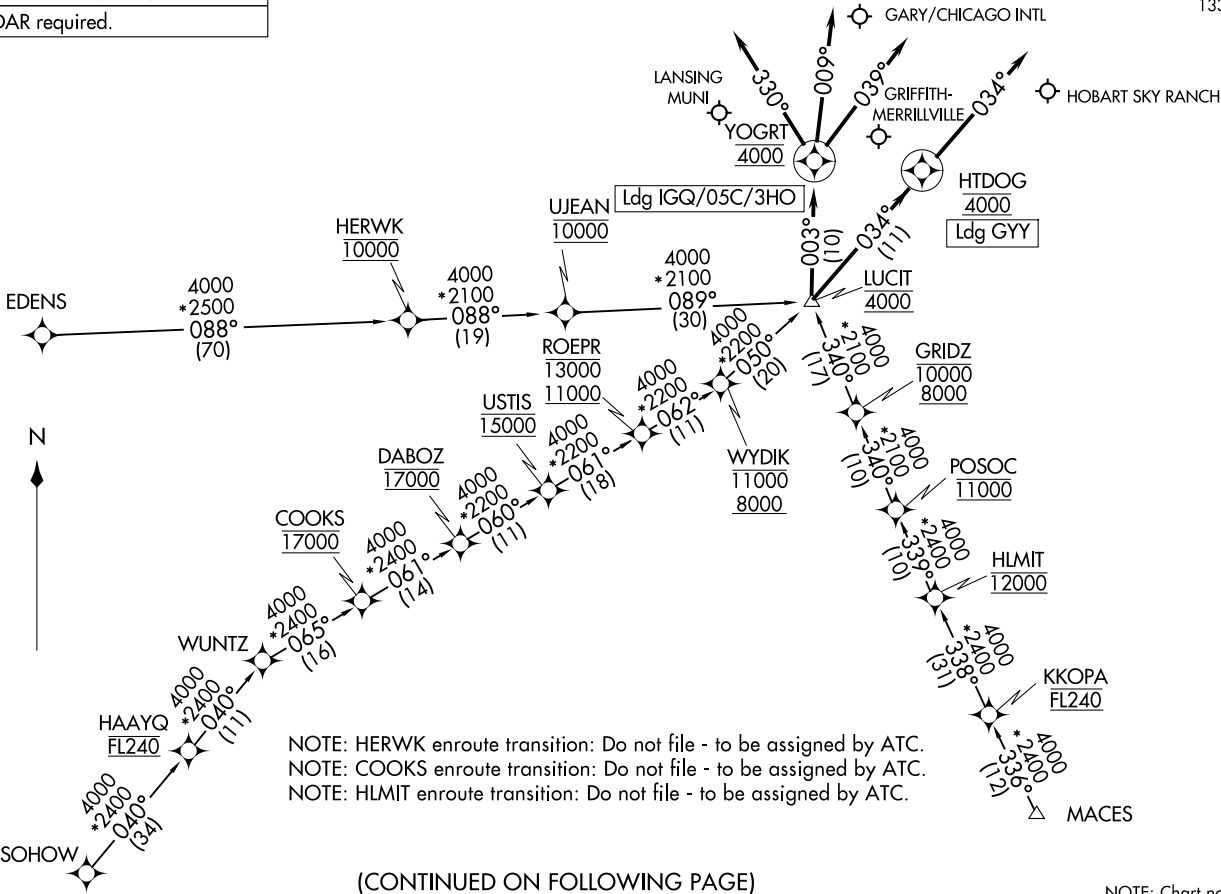
AL-748 (FAA)

GARY/CHICAGO, INDIANA

RNAV 1 - DME/DME/IRU or GPS.
RADAR required.

LUCIT THREE ARRIVAL (RNAV)
(LUCIT.LUCIT3) 31OCT24

GARY/CHICAGO, INDIANA



NOTE: HERWK enroute transition: Do not file - to be assigned by ATC.
NOTE: COOKS enroute transition: Do not file - to be assigned by ATC.
NOTE: HLMIT enroute transition: Do not file - to be assigned by ATC.

(CONTINUED ON FOLLOWING PAGE)

NOTE: Chart not to scale.

ARRIVAL ROUTE DESCRIPTION

COOKS TRANSITION (COOKS.LUCIT3):

EDENS TRANSITION (EDENS.LUCIT3):

HERWK TRANSITION (HERWK.LUCIT3):

HLMIT TRANSITION (HLMIT.LUCIT3):

MACES TRANSITION (MACES.LUCIT3):

SOHOW TRANSITION (SOHOW.LUCIT3):

LANDING 05C: From LUCIT on track 003° to cross YOGRT at 4000, then on track 009°. Expect RADAR vectors to final approach course.

LANDING 3HO: From LUCIT on track 003° to cross YOGRT at 4000, then on track 039°. Expect RADAR vectors to final approach course.

LANDING GYY: From LUCIT on track 034° to cross HTDOG at 4000, then on track 034°. Expect RADAR vectors to final approach course.

LANDING IGQ: From LUCIT on track 003° to cross YOGRT at 4000, then on track 330°. Expect RADAR vectors to final approach course.

EC-2, 20 FEB 2025 to 20 MAR 2025

EC-2, 20 FEB 2025 to 20 MAR 2025