

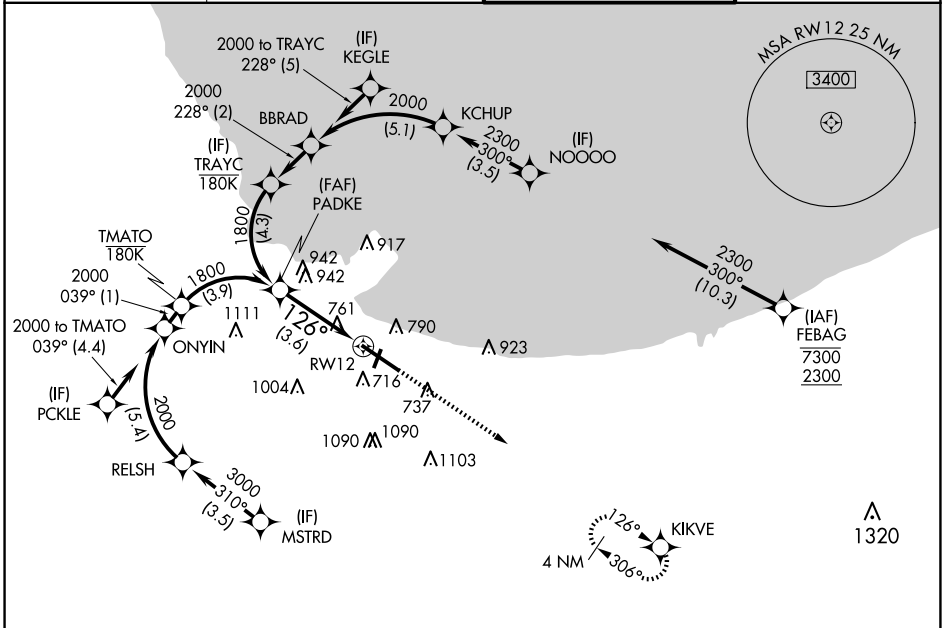
APP CRS	Rwy ldg	7959
126°	TDZE	597
	Apt Elev	597

RNAV (RNP) Z RWY 12

GARY/CHICAGO INTL (GYY)

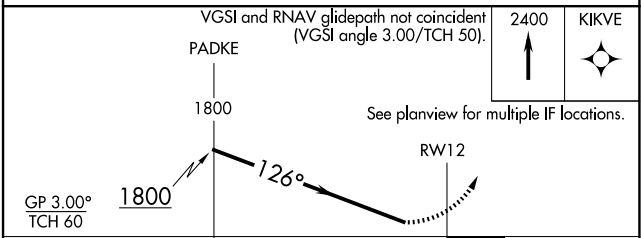
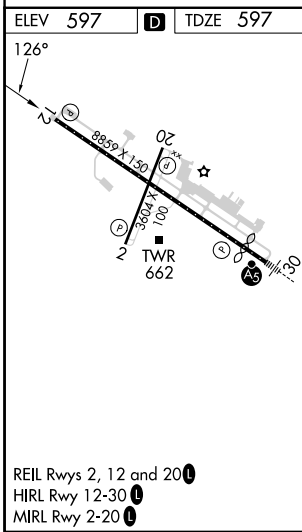
RNP AR APCH - GPS.	For uncompensated Baro-VNAV systems, procedure NA below -16°C or above 54°C.	MISSED APPROACH: Climb to 2400 direct KIKVE and hold.
--------------------	--	---

ATIS 134.575	CHICAGO APP CON 133.1 285.6	GARY TOWER * 125.6 (CTAF) 0	GND CON 121.9
------------------------	---------------------------------------	---------------------------------------	-------------------------



EC-2, 20 FEB 2025 to 20 MAR 2025

EC-2, 20 FEB 2025 to 20 MAR 2025



CATEGORY	A	B	C	D
RNP 0.10 DA		913-7/8	316 (400-7/8)	
RNP 0.30 DA		1043-1 3/8	446 (500-1 3/8)	

AUTHORIZATION REQUIRED