

# RNAV (GPS) Y RWY 12

GARY/CHICAGO INTL (GYY)

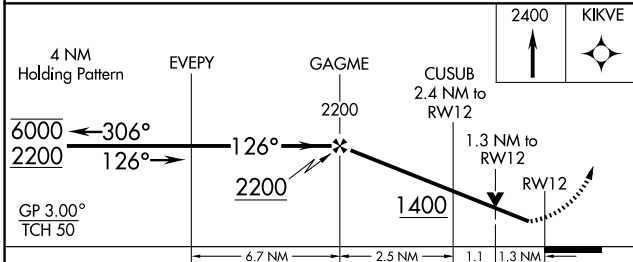
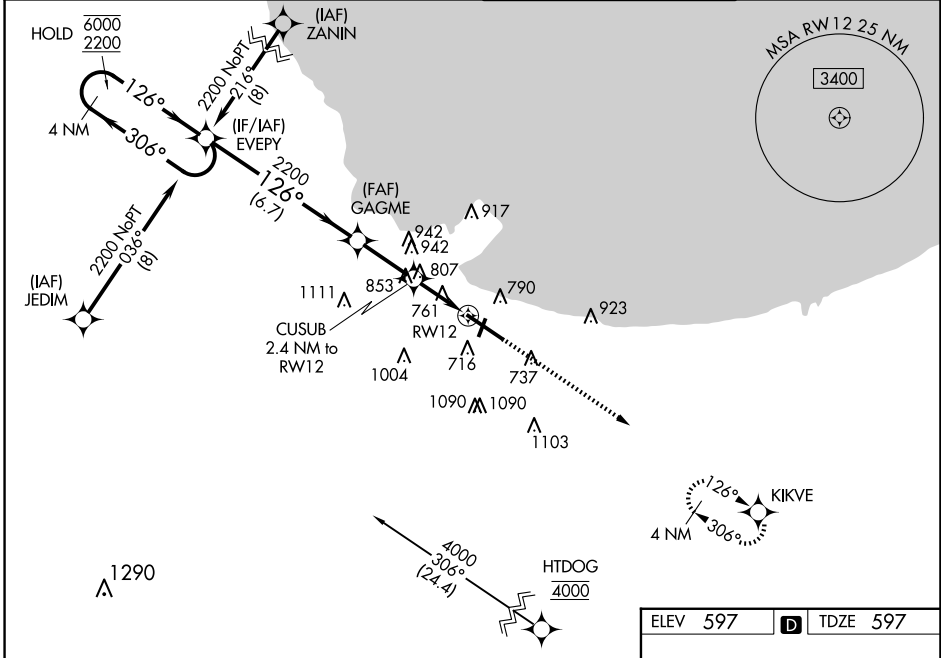
WAAS CH <b>70623</b> <b>W12A</b>	APP CRS <b>126°</b>	Rwy Idg TDZE Apt Elev	<b>7959</b> <b>597</b> <b>597</b>
--	------------------------	-----------------------------	---

RNP APCH - GPS.

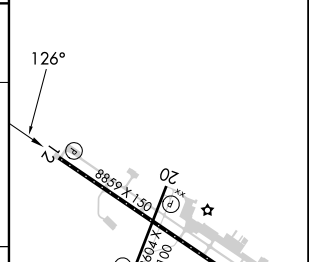
**⚠** For uncompensated Baro-VNAV systems, LNAV/VNAV NA below -16°C or above 54°C. Rwy 12 helicopter visibility reduction below 3/4 SM NA.

MISSED APPROACH: Climb to 2400 direct KIKVE and hold.

ATIS <b>134.575</b>	CHICAGO APP CON <b>133.1 285.6</b>	GARY TOWER ★ <b>125.6 (CTAF) 0</b>	GND CON <b>121.9</b>
------------------------	---------------------------------------	---------------------------------------	-------------------------



ELEV 597	<b>D</b>	TDZE 597
----------	----------	----------



CATEGORY	A	B	C	D
LPV DA	797-3/4		200 (200-3/4)	
LNAV/VNAV DA	1049-13/8		452 (500-13/8)	
LNAV MDA	1060-1	463 (500-1)	1060-13/8	463 (500-13/8)
<b>C</b> CIRCLING	1160-1 563 (600-1)	1180-1 583 (600-1)	1400-21/4 803 (900-21/4)	1420-23/4 823 (900-23/4)

REIL Rwy 2, 12 and 20 **0**  
 HIRL Rwy 12-30 **0**  
 MIRL Rwy 2-20 **0**

EC-2, 20 FEB 2025 to 20 MAR 2025

EC-2, 20 FEB 2025 to 20 MAR 2025