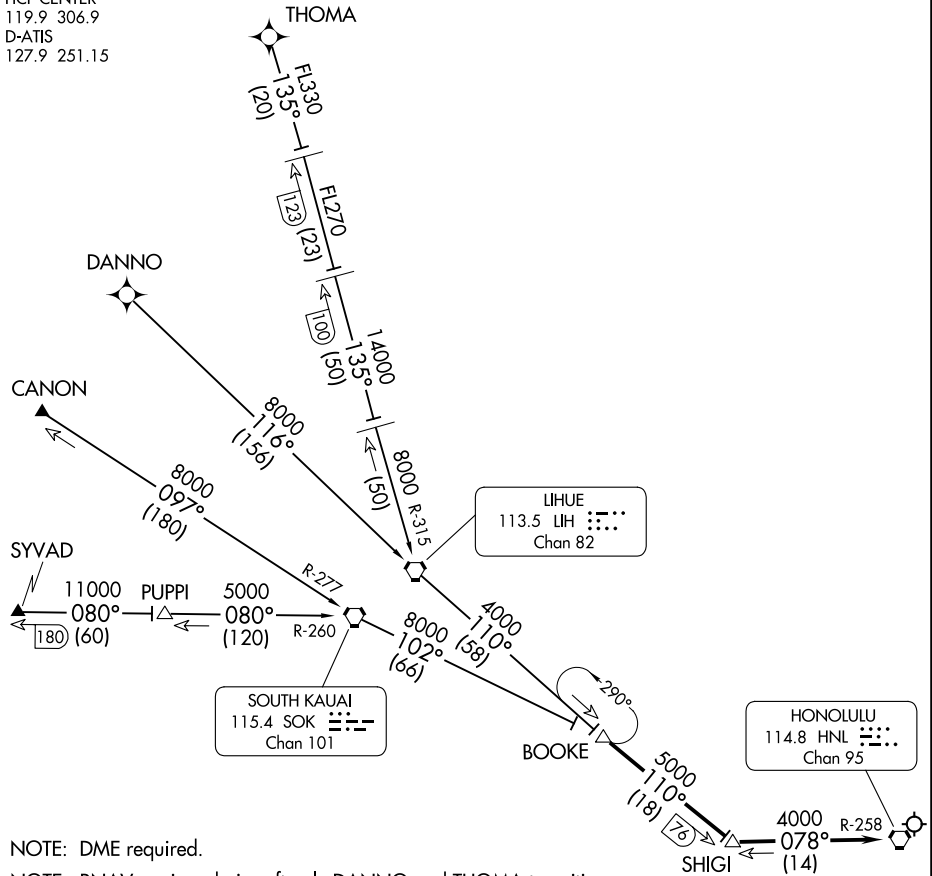


HCF CENTER  
119.9 306.9  
D-ATIS  
127.9 251.15



NOTE: DME required.  
 NOTE: RNAV equipped aircraft only DANNO and THOMA transitions.  
 NOTE: Chart not to scale

ARRIVAL ROUTE DESCRIPTION

**CANON TRANSITION (CANON.BOOKE8):** From over CANON INT via SOK R-277 to SOK VORTAC. Then via SOK R-102 to BOOKE DME. Thence. . .

**DANNO TRANSITION (DANNO.BOOKE8):** From over DANNO WP via RNAV 116° course to LIH VORTAC. Then via LIH R-110 to BOOKE DME. Thence. . .

**SYVAD TRANSITION (SYVAD.BOOKE8):** From over SYVAD INT via SOK R-260 to SOK VORTAC. Then via SOK R-102 to BOOKE DME. Thence. . .

**THOMA TRANSITION (THOMA.BOOKE8):** From over THOMA WP via RNAV 135° course to LIH 123 DME, then LIH R-315 to LIH VORTAC. Then via LIH R-110 to BOOKE DME. Thence. . .

. . . From over BOOKE DME via LIH R-110 and HNL R-258 to HNL VORTAC. Expect RADAR vectors.

PAC, 20 FEB 2025 to 17 APR 2025

PAC, 20 FEB 2025 to 17 APR 2025