

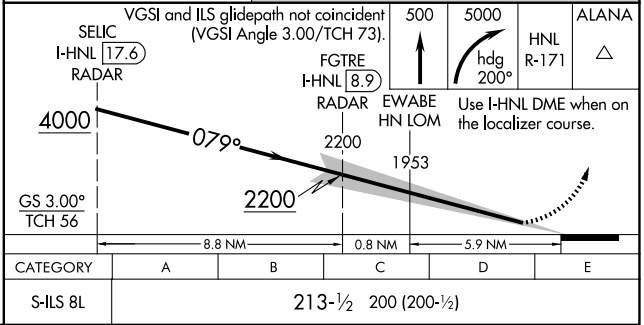
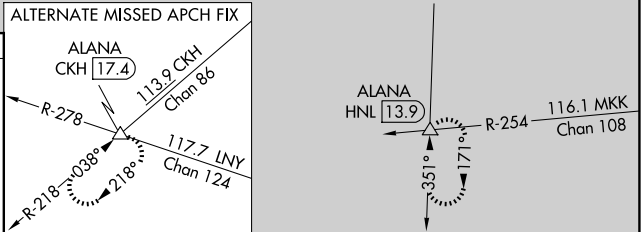
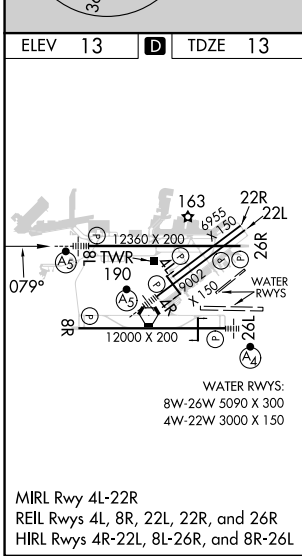
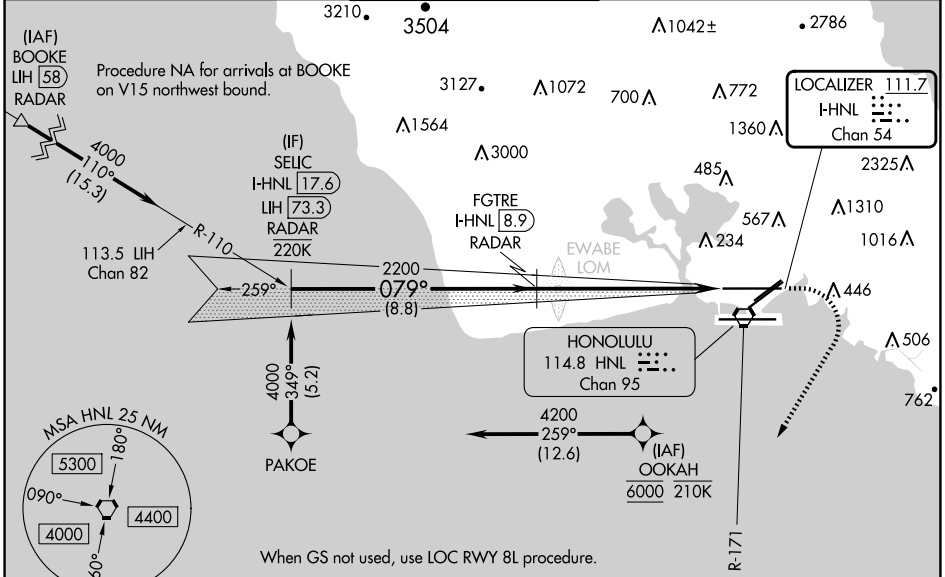
LOC/DME I-HNL <b>111.7</b> Chan 54	APP CRS <b>079°</b>	Rwy Idg <b>12312</b> TDZE <b>13</b> Apt Elev <b>13</b>
--	------------------------	--

# ILS RWY 8L

DANIEL K INOUEY INTL (HNL) (PHNL)

RNP APCH - GPS. From OOKAH.	MAISR	MISSED APPROACH: Climb to 500 then climbing right turn to 5000 on heading 200° and HNL VORTAC R-171 to ALANA INT/HNL 13.9 DME and hold, continue climb-in-hold to 5000.
DME or RADAR required.		
<p>For inop ALS, increase Cat E visibility to 3/4 SM. OOKAH transition NA for Cat E aircraft. Cat E restricted to USAF/USN aircraft.</p>		

D-ATIS <b>127.9 251.15</b>	HCF APPROACH <b>118.3 269.0</b>	HONOLULU TOWER <b>118.1 257.8</b> <b>123.9 273.575</b> (Rwy 8R/26L)	GND CON <b>121.9 348.6</b>	CLNC DEL <b>121.4 281.4</b>
-------------------------------	------------------------------------	---	-------------------------------	--------------------------------



PAC, 20 FEB 2025 to 17 APR 2025

PAC, 20 FEB 2025 to 17 APR 2025