

LOC/DME I-HUM <b>110.5</b> Chan <b>42</b>	APP CRS <b>042°</b>	Rwy Idg <b>8950</b> TDZE <b>8</b> Apt Elev <b>13</b>
---	------------------------	--

# ILS Z RWY 4R

DANIEL K INOUEY INTL (HNL) (PHNL)

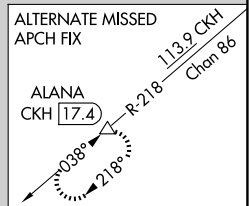
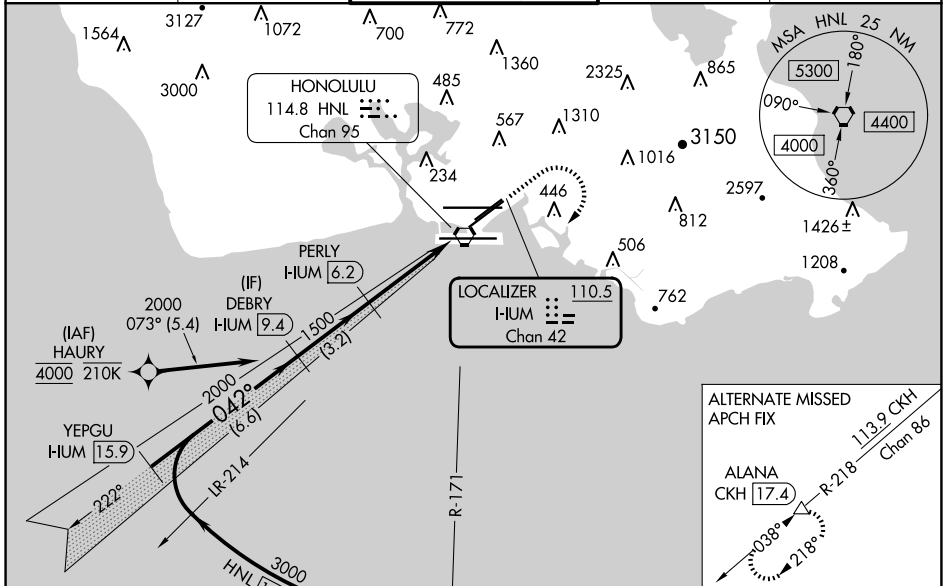
From HAURY: RNAV 1-GPS required. DME or RADAR required. DME or RADAR required for procedure entry.

MALSRL

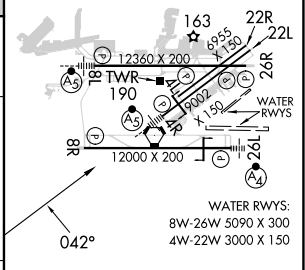
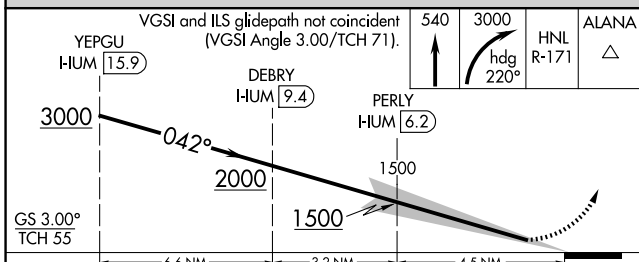
MISSED APPROACH: Climb to 540, Cat E climb to 780 then climbing right turn to 3000 on heading 220° and on HNL VORTAC R-171 to ALANA INT/HNL VORTAC 13.9 DME and hold. \* Missed approach requires minimum climb of 318 feet per NM to 1820, (if unable to meet climb gradient use S-ILS 4R minimums).

HAURY transition NA for Cat E aircraft. For inop ALS, increase S-ILS 4R Cats A-D visibility to ½ SM, increase S-ILS 4R Cat E visibility to 1½ SM.

D-ATIS <b>127.9 251.15</b>	HCF APPROACH <b>118.3 269.0</b>	HONOLULU TOWER <b>118.1 257.8</b> <b>123.9 273.575</b> (Rwy 8R/26L)	GND CON <b>121.9 348.6</b>	CLNC DEL <b>121.4 281.4</b>
-------------------------------	------------------------------------	---	-------------------------------	--------------------------------



ELEV 13	<b>D</b>	TDZE 8
---------	----------	--------



CATEGORY	A	B	C	D	E
S-ILS 4R*		258-½	250 (300-½)		NA
S-ILS 4R		308-½	299 (300-½)		566-1⅛ 557 (600-1½)

MIRL Rwy 4L-22R  
REIL Rwy 4L, 8R, 22L, 22R, and 26R  
HIRL Rwy 4R-22L, 8L-26R, and 8R-26L