

# MAGGI THREE ARRIVAL

AL-754 (FAA)

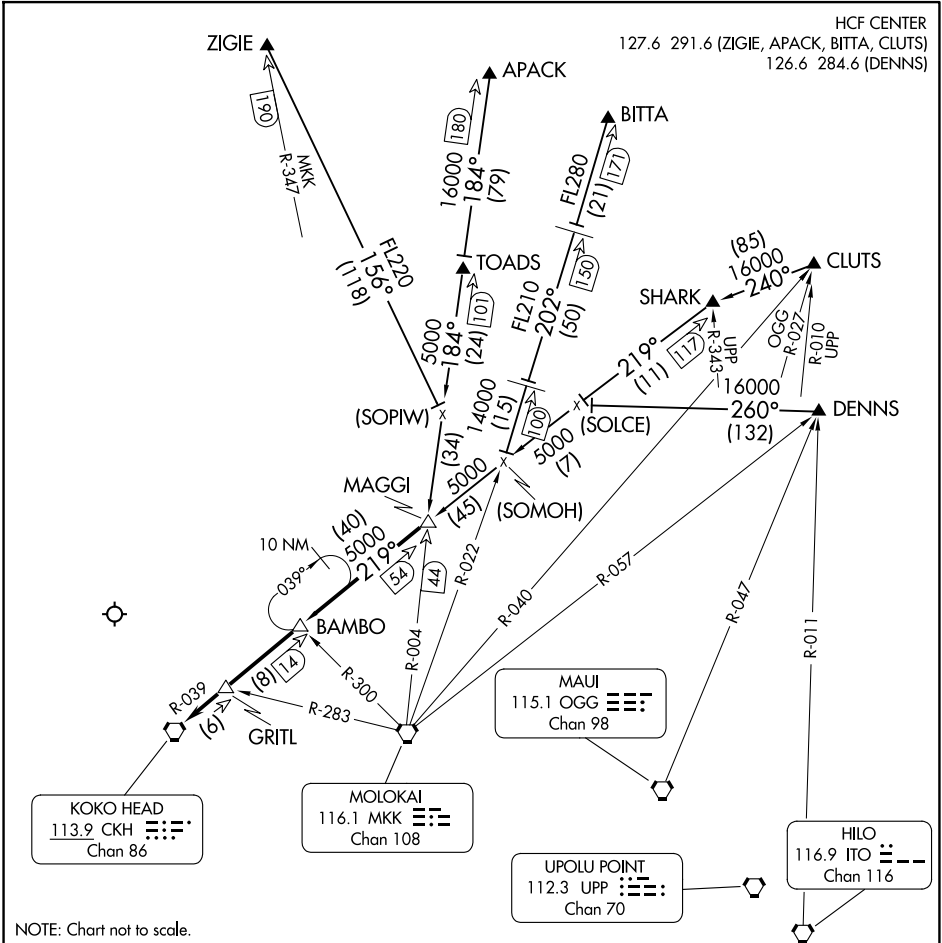
DANIEL K INOUYE INTL (HNL) (PHNL)  
HONOLULU, HAWAII

HCF CENTER

127.6 291.6 (ZIGIE, APACK, BITTA, CLUTS)  
126.6 284.6 (DENNS)

PAC, 20 FEB 2025 to 17 APR 2025

PAC, 20 FEB 2025 to 17 APR 2025



NOTE: Chart not to scale.

## ARRIVAL ROUTE DESCRIPTION

**APACK TRANSITION (APACK.MAGGI3):** From over APACK DME via MKK R-004 to MAGGI INT. Thence. . . .

**BITTA TRANSITION (BITTA.MAGGI3):** From over BITTA DME via MKK R-022 to intercept CKH R-039 to MAGGI INT. Thence. . . .

**CLUTS TRANSITION (CLUTS.MAGGI3):** From over CLUTS DME via heading 240° to intercept CKH R-039 to MAGGI INT. Thence. . . .

**DENNS TRANSITION (DENNS.MAGGI3):** From over DENNS INT via heading 260° to intercept CKH R-039 to MAGGI INT. Thence. . . .

**ZIGIE TRANSITION (ZIGIE.MAGGI3):** From over ZIGIE DME via heading 156° to intercept MKK R-004 to MAGGI INT. Thence. . . .

. . . .From over MAGGI INT via CKH R-039 to CKH VORTAC then RADAR vectors for approach to airport.

# MAGGI THREE ARRIVAL