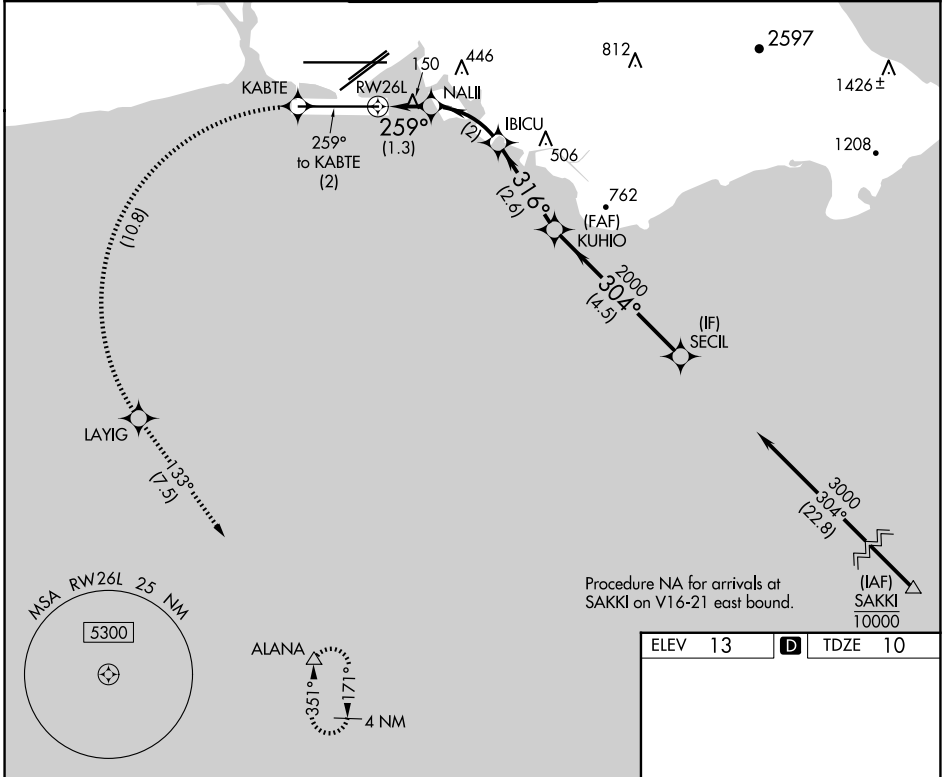


APP CRS	Rwy Idg	12000
259°	TDZE	10
	Apt Elev	13

RNAV (RNP) RWY 26L

DANIEL K INOUEY INTL (HNL) (PHNL)

RNP AR APCH, RF required.		MALSF	MISSED APPROACH: Climb to 3000 on track 259° to KABTE, left turn to LAYIG, then track 133° to ALANA and hold. Missed approach requires minimum climb of 234 feet per 300.	
<p>▼ For uncompensated Baro-VNAV systems, procedure NA below 15°C (58°F) or above 53°C (128°F).</p> <p>▲ NA</p>				
D-ATIS	HCF APPROACH	HONOLULU TOWER		GND CON
127.9 251.15	118.3 269.0	118.1 257.8 123.9 273.575 (Rwy 8R/26L)		121.9 348.6
				CLNC DEL
				121.4 281.4

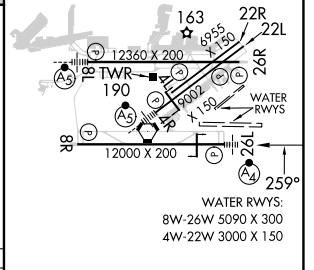
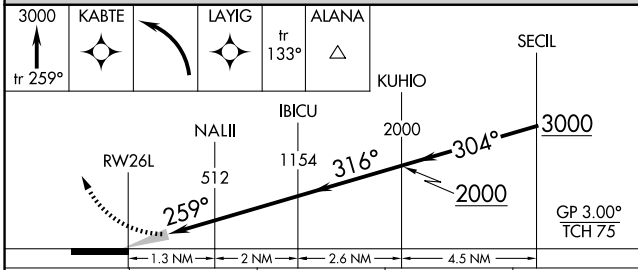


PAC: 20 FEB 2025 to 17 APR 2025

PAC: 20 FEB 2025 to 17 APR 2025

Procedure NA for arrivals at SAKKI on V16-21 east bound.

ELEV	13	D	TDZE	10
------	-----------	----------	------	-----------



CATEGORY	A	B	C	D
RNP 0.15 DA	260-¾		250 (300-¾)	

AUTHORIZATION REQUIRED

MIRL Rwy 4L-22R
 REIL Rwys 4L, 8R, 22L, 22R, and 26R
 HIRL Rwys 4R-22L, 8L-26R, and 8R-26L