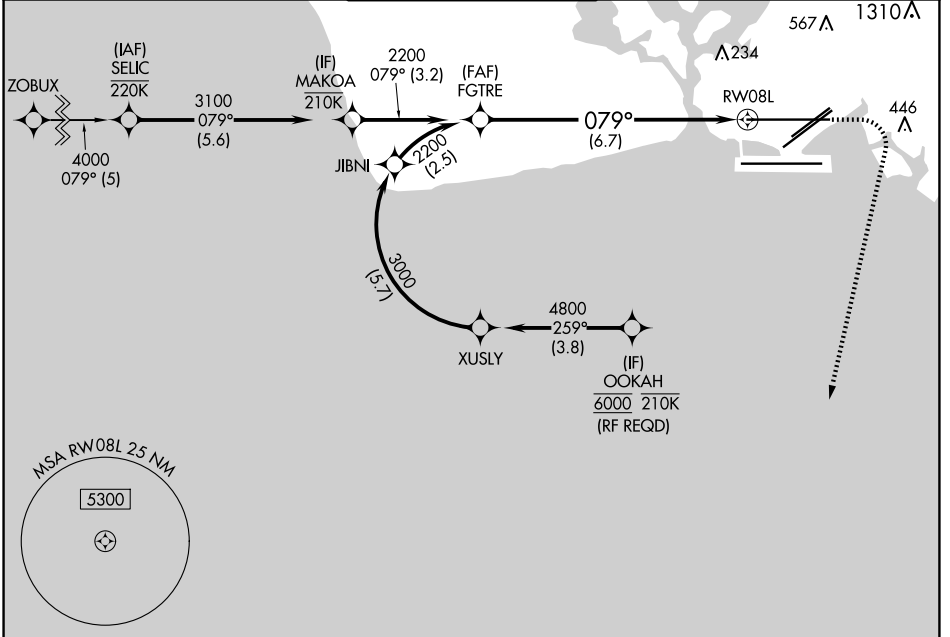


APP CRS 079°	Rwy Idg 12312
	TDZE 13
	Apt Elev 13

RNAV (RNP) Z RWY 8L

DANIEL K INOUE INTL (HNL) (PHNL)

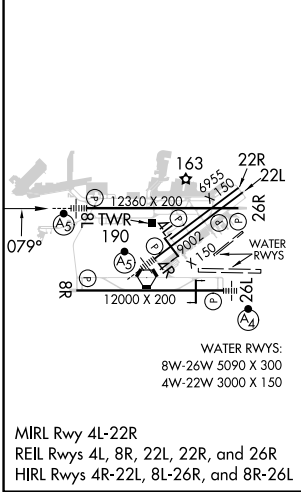
RNP AR APCH - GPS.		MALSR	MISSED APPROACH: Climb to 420 then climbing right turn to 3000 direct ALANA and hold.	
<p>▼ For uncompensated Baro-VNAV systems, procedure NA below 17°C or above 54°C. For inop ALS, increase RNP 0.15 DA all Cats visibility to ½ SM.</p>				
D-ATIS 127.9 251.15	HCF APPROACH 118.3 269.0	HONOLULU TOWER 118.1 257.8 123.9 273.575 (Rwy 8R/26L)	GND CON 121.9 348.6	CLNC DEL 121.4 281.4



PAC, 20 FEB 2025 to 17 APR 2025

PAC, 20 FEB 2025 to 17 APR 2025

ELEV 13	D	TDZE 13
---------	----------	---------



MIRL Rwy 4L-22R
REIL Rwys 4L, 8R, 22L, 22R, and 26R
HIRL Rwys 4R-22L, 8L-26R, and 8R-26L

ALANA Δ 420

3.51°

171°

4 NM

MAKOA	VGSi and RNAV glidepath not coincident (VGSi Angle 3.00/TCH 73).			420	3000	ALANA Δ
3100	079°	2200	FGTR	See planview for multiple IF locations.		
GP 3.00°		2200				RW08L
TCH 56				3.2 NM	6.7 NM	
CATEGORY	A	B	C	D		
RNP 0.15 DA		285-½	272 (300-½)			
RNP 0.30 DA		347-½	334 (400-½)			

AUTHORIZATION REQUIRED