

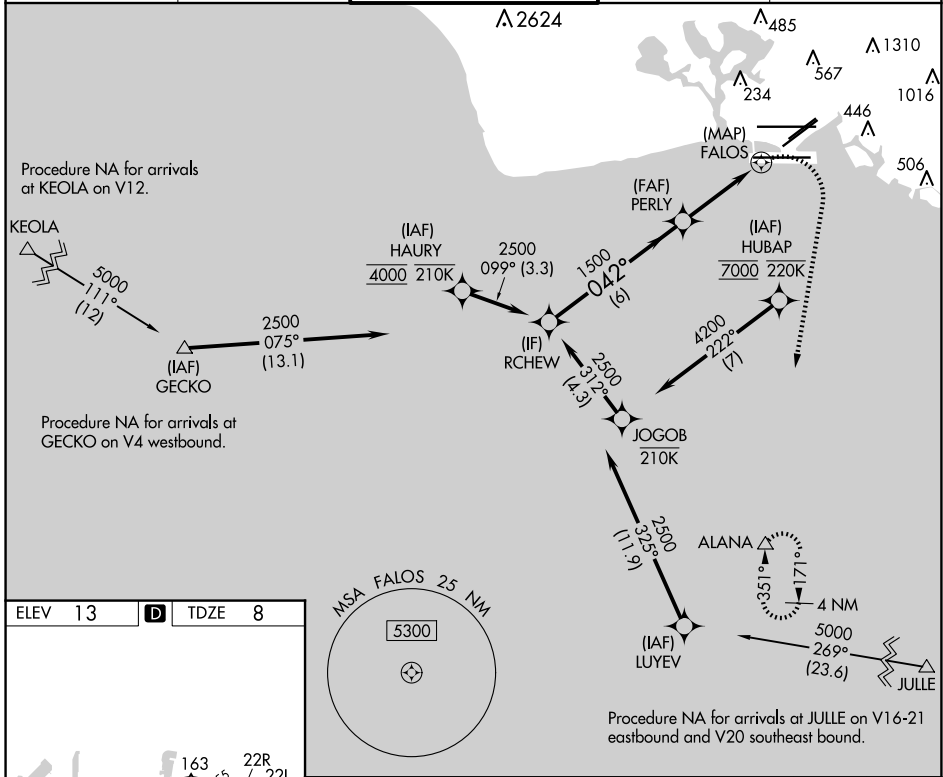
APP CRS	Rwy Idg	<b>8950</b>
<b>042°</b>	TDZE	<b>8</b>
	Apt Elev	<b>13</b>

# RNAV (GPS) Y RWY 4R

DANIEL K INOUYE INTL (HNL) (PHNL)

RNP APCH.	MALSR	MISSED APPROACH: Climbing right turn to 3000 direct ALANA and hold.
<p><b>▼</b> Circling Rwy 22R NA at night. Circling NA for Cats A and B northwest of Rwy 8L and 22R. Circling NA for Cats C and D north of Rwy 8L-26R. For inop ALS, increase LNAV Cat E visibility to 2 SM. Circling NA to sea lanes 4W, 8W, 22W, and 26W. HUBAP transition NA for Cat E aircraft. HAURY transition NA for Cat E aircraft.</p>		

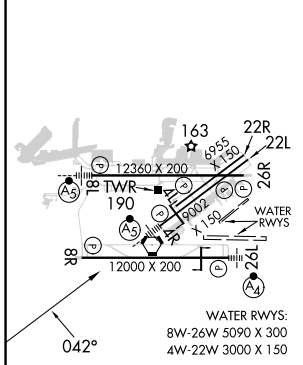
D-ATIS	HCF APPROACH	HONOLULU TOWER	GND CON	CLNC DEL
<b>127.9 251.15</b>	<b>118.3 269.0</b>	<b>118.1 257.8</b> <b>123.9 273.575</b> (Rwy 8R/26L)	<b>121.9 348.6</b>	<b>121.4 281.4</b>



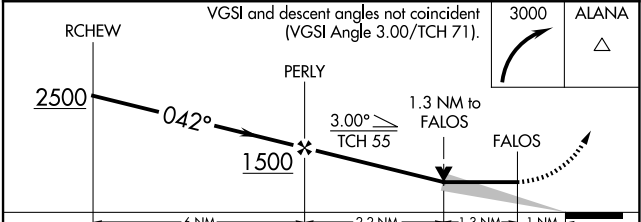
PAC, 20 FEB 2025 to 17 APR 2025

PAC, 20 FEB 2025 to 17 APR 2025

ELEV 13	<b>D</b>	TDZE 8
---------	----------	--------



MIRL Rwy 4L-22R
REIL Rwys 4L, 8R, 22L, 22R, and 26R
HIRL Rwys 4R-22L, 8L-26R, and 8R-26L



CATEGORY	A	B	C	D	E
LNAV MDA	460- <sup>3</sup> / <sub>4</sub>	452 (500- <sup>3</sup> / <sub>4</sub> )	460- <sup>7</sup> / <sub>8</sub>	452 (500- <sup>7</sup> / <sub>8</sub> )	460- <sup>1</sup> / <sub>4</sub> 452 (500- <sup>1</sup> / <sub>4</sub> )
<b>C</b> CIRCLING	680-1 <sup>1</sup> / <sub>4</sub> 667 (700-1 <sup>1</sup> / <sub>4</sub> )	760-1 <sup>1</sup> / <sub>4</sub> 747 (800-1 <sup>1</sup> / <sub>4</sub> )	820-2 <sup>1</sup> / <sub>4</sub> 807 (900-2 <sup>1</sup> / <sub>4</sub> )	1400-3 1387 (1400-3)	NA