

WAHIAWA, OAHU I, HAWAII

# VOR or TACAN-B

VORTAC HNL <b>114.8</b> Chan <b>95</b>	APCH CRS <b>319°</b>	Rwy ldg TDZE Arpt Elev <b>N/A</b> <b>N/A</b> <b>843</b>
--	-------------------------	--

AL-2832 [USA]

WHEELER AAF (PHHI)

DME required

\* Circling not authorized N Rwy 6-24 when class D surface area is VFR. Circling to Rwy 24 not authorized at night.

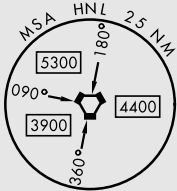
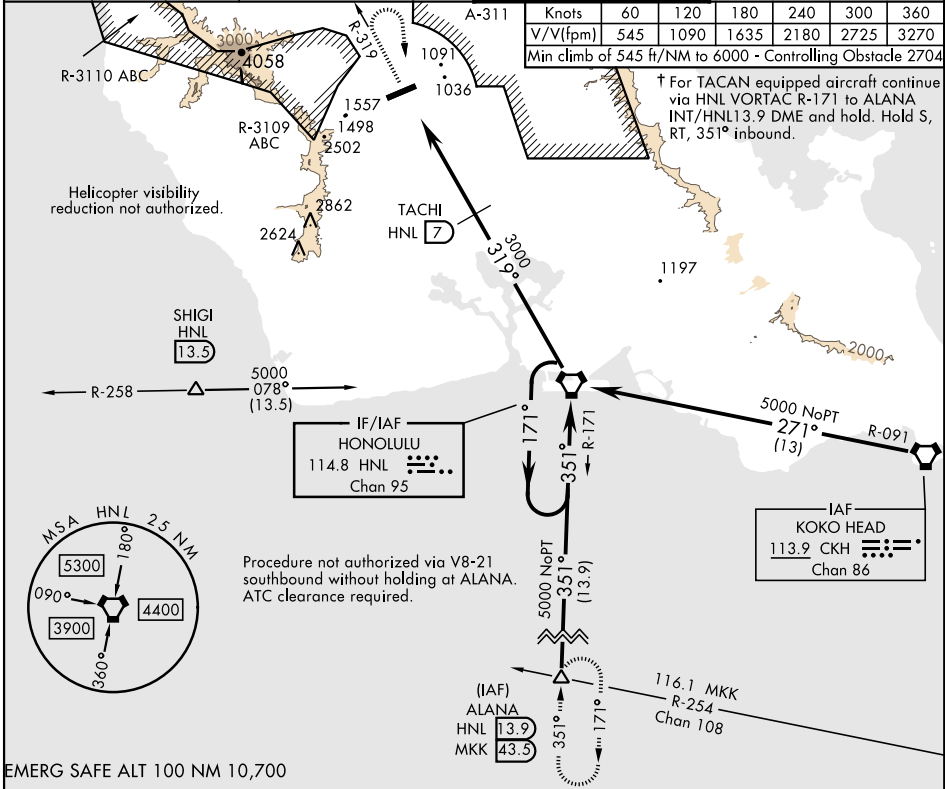
† MISSED APPROACH: Climb to 3000, then right turn via heading 180° and HNL VORTAC R-319 to cross TACHI INT/HNL 7 DME at 6000, then via HNL VORTAC R-319 to HNL VORTAC and hold.

ATIS <b>119.675 242.4</b>	HCF APP CON <b>118.3 269.0</b>	TOWER ★ <b>126.3 (CTAF) 235.625</b>	GND CON <b>41.5 FM 121.85 237.5</b>
------------------------------	-----------------------------------	--	--

Knots	60	120	180	240	300	360
V/V (fpm)	545	1090	1635	2180	2725	3270

Min climb of 545 ft/NM to 6000 - Controlling Obstacle 2704

† For TACAN equipped aircraft continue via HNL VORTAC R-171 to ALANA INT/HNL13.9 DME and hold. Hold S, RT, 351° inbound.



3000

↑ hdg 180°

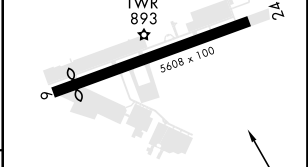
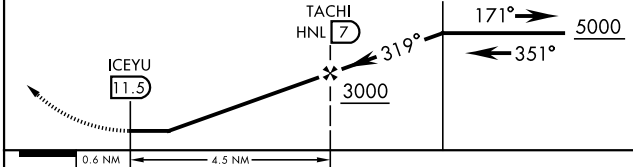
HNL R-319

HNL

When local altimeter not received use HNL INTL altimeter setting and minimums.

VORTAC

ELEV 843
Rwy 6 ldg 5038'



CATEGORY	A	B	C	D
CIRCLING *	1400-1 557 (600-1)	1800-1½ 957 (1000-1½)	2820-3 1977 (2000-3)	NOT AUTHORIZED
DANIEL K. INOUEY INTL ALTIMETER MINIMUMS				
CIRCLING *	1560-1 717 (800-1)	1960-1½ 1117 (1200-1½)	2980-3 2137 (2200-3)	NOT AUTHORIZED

MIRL Rwy 6-24

WAHIAWA, OAHU I, HAWAII  
Amdt 4 07SEP23

21° 29' N - 158° 02' W

WHEELER AAF (PHHI)

# VOR or TACAN-B

PAC, 20 FEB 2025 to 17 APR 2025

PAC, 20 FEB 2025 to 17 APR 2025