

LOC/DME I-TO <b>110.7</b> Chan <b>44</b>	APP CRS <b>259°</b>	Rwy Idg <b>9800</b> TDZE <b>38</b> Apt Elev <b>38</b>
--	------------------------	---

# ILS or LOC RWY 26

HILO INTL (ITO) (PHTO)

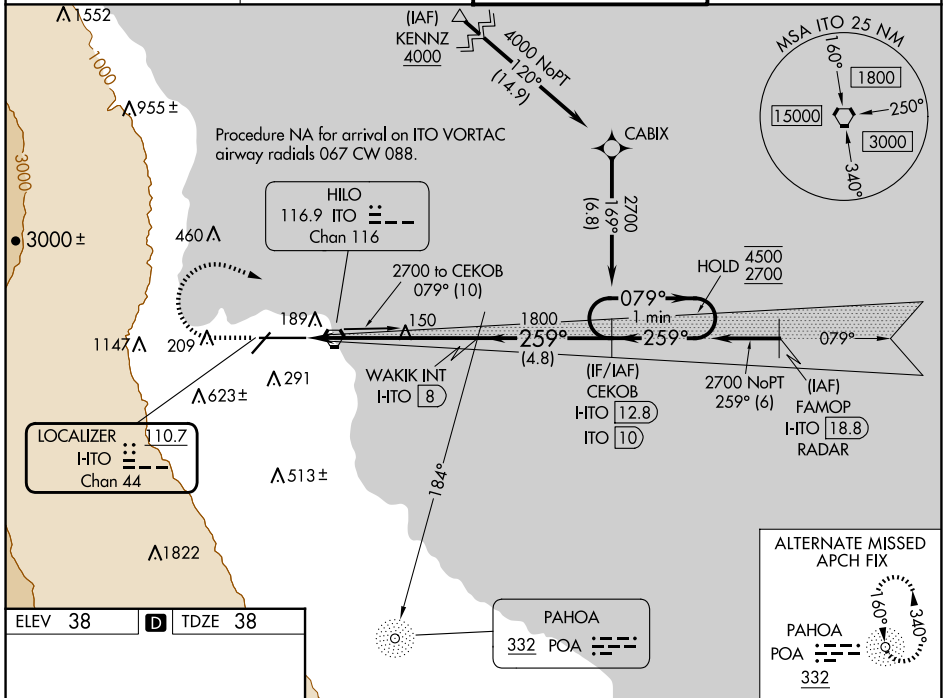
DME required. From KENNZ: RNAV 1-GPS required.

**⚠** Circling NA south of Rwy 8-26. Rwy 26 helicopter visibility reduction below 3/4 SM NA. Inop table does not apply to S-ILS 26 all Cats. For inop ALS, increase S-LOC 26 Cat A/B visibility to 1 SM, and Cat C/D to 1 1/2 SM.

**MALSR**

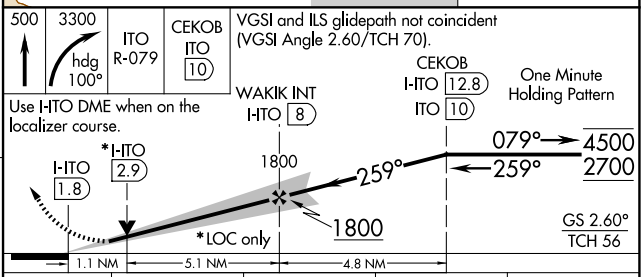
MISSED APPROACH: Climb to 500 then climbing right turn to 3300 on heading 100° and on ITO VORTAC R-079 to CEKOB/ITO VORTAC 10 DME and hold, continue climb-in-hold to 3300.

ATIS <b>126.4</b>	HILO APP CON* <b>119.7 269.2</b>	HILO TOWER* <b>118.1(CTAF) 263.1</b>	GND CON <b>121.9</b>
----------------------	-------------------------------------	---	-------------------------



ELEV 38	<b>D</b> TDZE 38
---------	------------------

REIL Rwy 3  
MIRL Rwy 3-21 **Ⓛ**  
HIRL Rwy 8-26 **Ⓛ**



CATEGORY	A	B	C	D
S-ILS 26		288-3/4	250 (300-3/4)	
S-LOC 26		420-3/4	382 (400-3/4)	
<b>C</b> CIRCLING	500-1 462 (500-1)	540-1 502 (600-1)	840-2 1/4 802 (900-2 1/4)	1320-3 1282 (1300-3)

PAC: 20 FEB 2025 to 17 APR 2025

PAC: 20 FEB 2025 to 17 APR 2025