

APP CRS	Rwy ldg	<b>9800</b>
<b>259°</b>	TDZE	<b>38</b>
	Apt Elev	<b>38</b>


# RNAV (GPS) RWY 26

HILO INTL (ITO) (PHTO)

RNP APCH.

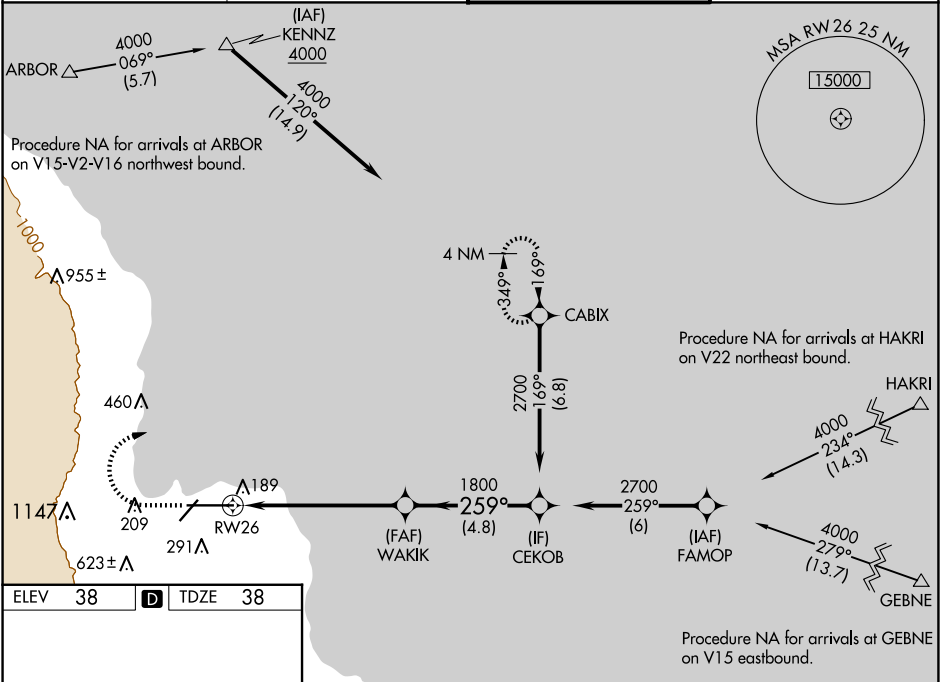
**⚠** Circling NA south of Rwy 8-26. Rwy 26 helicopter visibility reduction below 3/4 SM NA. WAAS VNAV NA. For uncompensated Baro-VNAV systems, LNAV/VNAV NA below 15°C or above 54°C. For inop ALS, increase LNAV/VNAV all Cats visibility to 3/8 SM and increase LNAV Cat A/B visibility to 1 SM.

MALSR

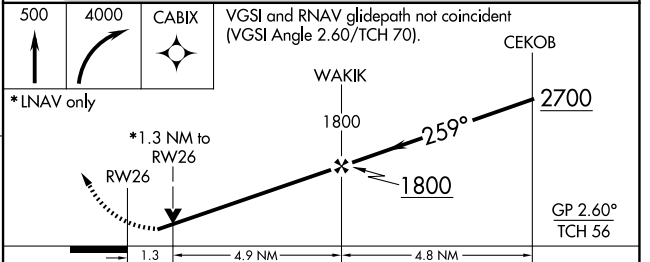
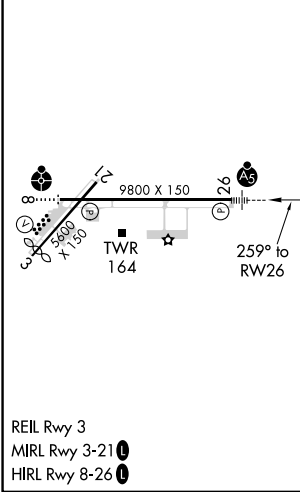


**⚠** MISSED APPROACH: Climb to 500 then climbing right turn to 4000 direct CABIX and hold, continue climb-in-hold to 4000.

ATIS <b>126.4</b>	HILO APP CON* <b>119.7 269.2</b>	HILO TOWER* <b>118.1(CTAF) 263.1</b>	GND CON <b>121.9</b>
----------------------	-------------------------------------	---	-------------------------



ELEV 38	<b>D</b>	TDZE 38
---------	----------	---------



CATEGORY	A	B	C	D
LNAV/VNAV DA		350-3/4	312 (400-3/4)	
LNAV MDA		460-3/4	422 (500-3/4)	
<b>C</b> CIRCLING	500-1 462 (500-1)	540-1 502 (600-1)	840-2 1/4 802 (900-2 1/4)	1320-3 1282 (1300-3)

PAC, 20 FEB 2025 to 17 APR 2025

PAC, 20 FEB 2025 to 17 APR 2025