

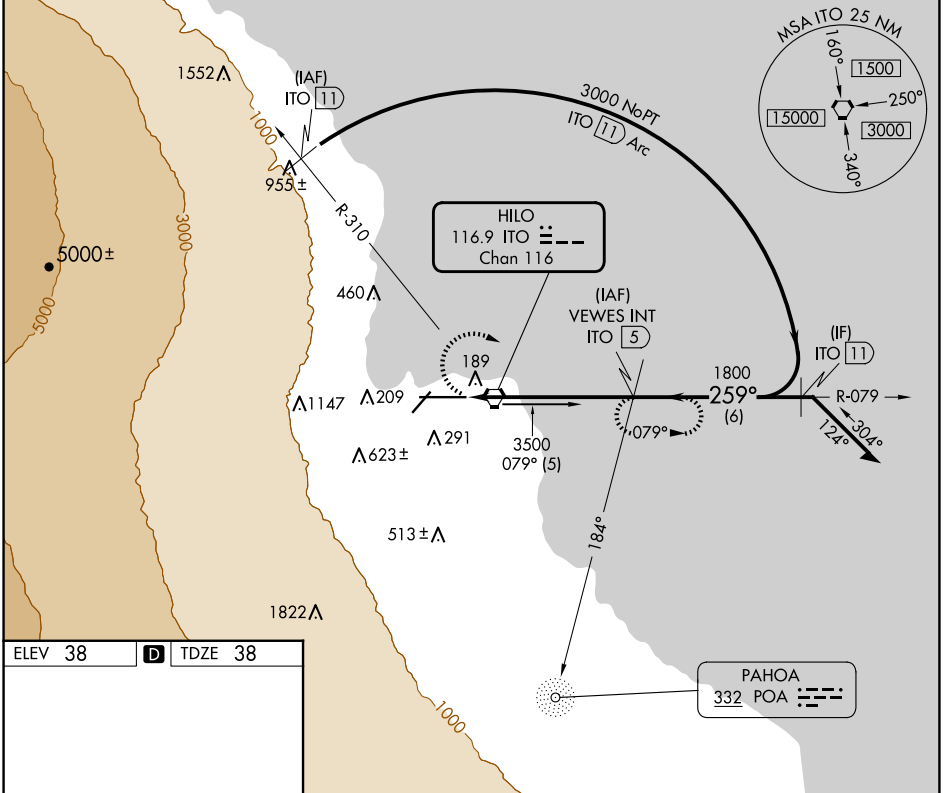
VORTAC ITO <b>116.9</b> Chan <b>116</b>	APP CRS <b>259°</b>	Rwy Idg <b>9800</b> TDZE <b>38</b> Apt Elev <b>38</b>
---	------------------------	---

# VOR/DME or TACAN RWY 26

HILO INTL (ITO) (PHTO)

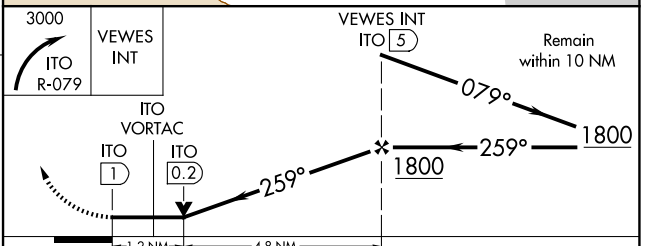
	For inop ALS, increase S-26 Cat A/B visibility to 1 SM and Cat D to 1 1/4 SM. Circling NA south of Rwy 8-26. Helicopter visibility reduction below 3/4 SM NA.		MISSED APPROACH: Climbing right turn to 3000 on ITO VORTAC R-079 to VEWES/5 DME and hold.
--	---	--	---

ATIS <b>126.4</b>	HILO APP CON* <b>119.7 269.2</b>	HILO TOWER* <b>118.1(CTAF) 263.1</b>	GND CON <b>121.9</b>
----------------------	-------------------------------------	---	-------------------------



ELEV 38	<b>D</b>	TDZE 38
---------	----------	---------

REIL Rwy 3  
MIRL Rwy 3-21  
HIRL Rwy 8-26



CATEGORY	A	B	C	D
S-26	460-3/4 422 (500-3/4)			460-1 422 (500-1)
<b>C</b> CIRCLING	500-1 462 (500-1)	540-1 502 (600-1)	840-2 1/4 802 (900-2 1/4)	1320-3 1282 (1300-3)

# VOR/DME or TACAN RWY 26

PAC, 20 FEB 2025 to 17 APR 2025

PAC, 20 FEB 2025 to 17 APR 2025