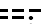
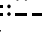


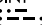
HCF CENTER  
119.5 225.4  
ATIS  
128.6  
MAUI TOWER\*  
118.7 279.6

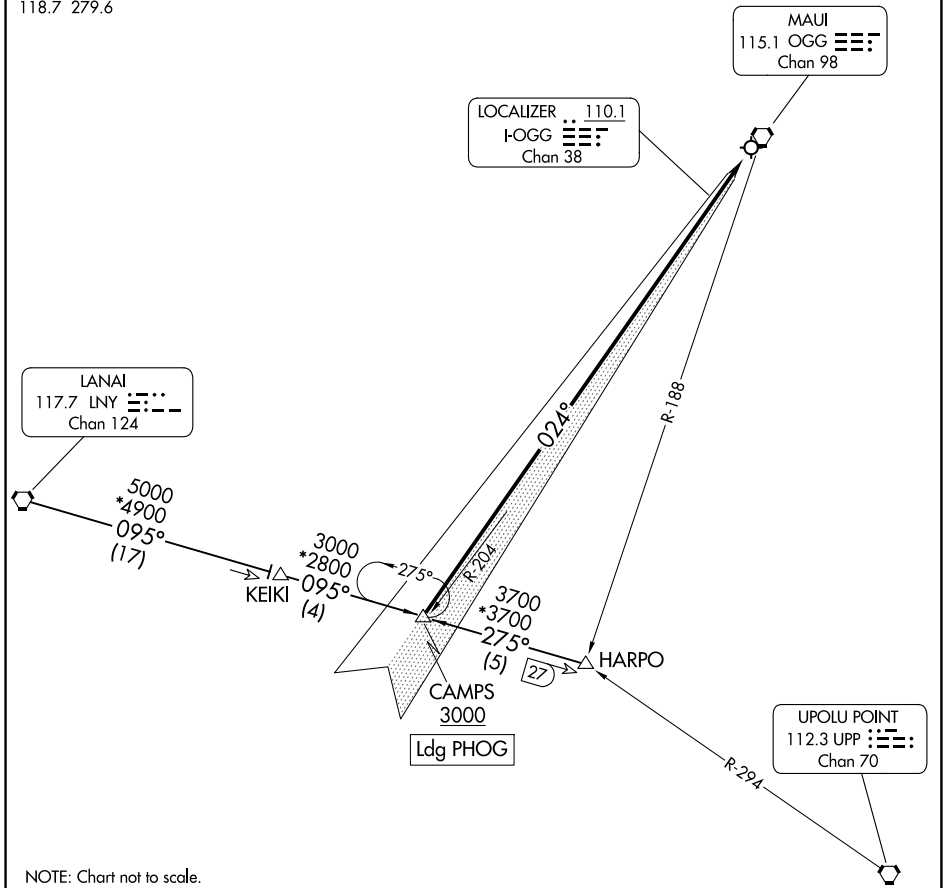
RADAR required to HARPO.  
DME required for LANAI Transition.

MAUI  
115.1 OGG   
Chan 98

LOCALIZER .. 110.1  
I-OGG   
Chan 38

LANAI  
117.7 LNY   
Chan 124

UPOLU POINT  
112.3 UPP   
Chan 70



PAC, 20 FEB 2025 to 17 APR 2025

PAC, 20 FEB 2025 to 17 APR 2025

NOTE: Chart not to scale.

### ARRIVAL ROUTE DESCRIPTION

HARPO TRANSITION (HARPO.CAMPS4): From over HARPO on LNY R-095 to CAMPS.  
Thence . . . .

LANAI TRANSITION (LNY.CAMPS4): From over LNY VORTAC on LNY R-095 to CAMPS.  
Thence . . . .

. . . . cross CAMPS at or above 3000, then on I-OGG localizer course. Expect  
ILS Y or LOC Y RWY 2 approach.