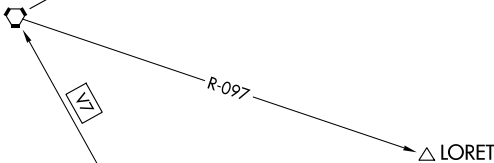



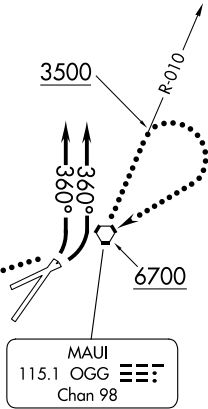
HCF APPROACH  
120.2 322.4  
ATIS  
128.6  
CLNC DEL  
120.6 290.5  
GND CON  
121.9 279.6  
MAUI TOWER★  
118.7 (CTAF) 279.6

MOLOKAI  
116.1 MKK   
Chan 108



Cross at assigned altitude.  
When assigned above 14000',  
cross at or above 14000'.

LANAI  
117.7 LNY   
Chan 124



NOTE: Takeoff requires minimum climb  
of 420' per NM until reaching 8000'.

NOTE: Chart not to scale.

PAC: 20 FEB 2025 to 17 APR 2025

PAC: 20 FEB 2025 to 17 APR 2025



## DEPARTURE ROUTE DESCRIPTION

**TAKEOFF RUNWAYS 2 AND 5 ONLY:** After takeoff, all aircraft fly heading 360°, expect radar vectors west of Maui Island to assigned fix/route. Cross the LNY R-322 at assigned altitude. When assigned above 14000', cross at or above 14000'.

**LOST COMMUNICATIONS:** If not in contact with Departure Control 1 minute after crossing the shoreline, climb northbound via the OGG R-010 until reaching at least 3500'. Then reverse course to the right direct OGG VORTAC. Then via V24 to LNY VORTAC. Cross OGG VORTAC at or above 6700'.