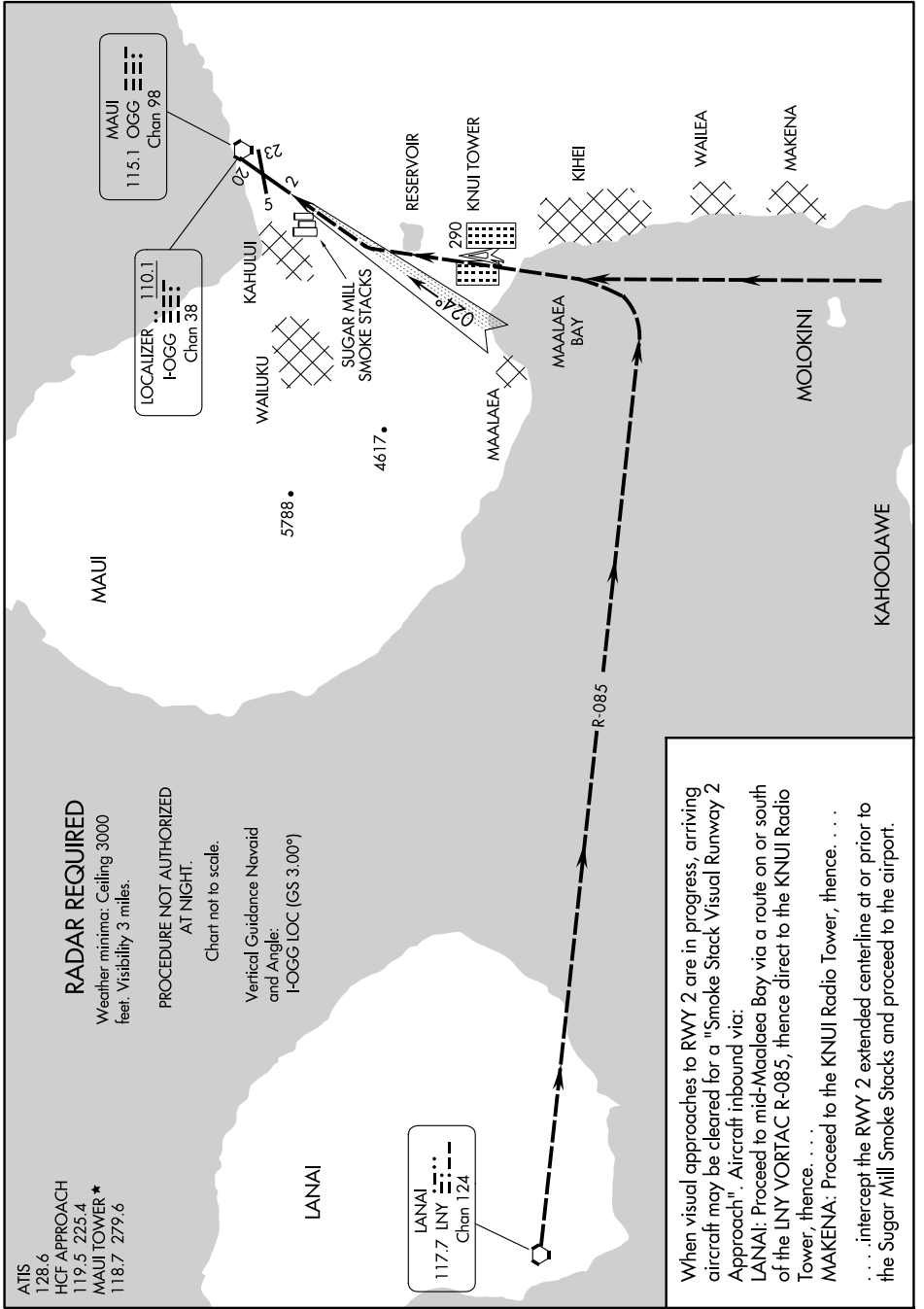


SMOKE STACK VISUAL RWY 2

PAC, 20 FEB 2025 to 17 APR 2025



ATIS
128.6
HCF APPROACH
119.5 225.4
MAUI TOWER ★
118.7 279.6

RADAR REQUIRED

Weather minima: Ceiling 3000
feet. Visibility 3 miles.

PROCEDURE NOT AUTHORIZED
AT NIGHT.

Chart not to scale.

Vertical Guidance Navaid
and Angle:
I-OGG LOC (GS 3.00°)

LANAI
117.7 LNY
Chan 124

When visual approaches to RWY 2 are in progress, arriving aircraft may be cleared for a "Smoke Stack Visual Runway 2 Approach". Aircraft inbound via:
LANAI: Proceed to mid-Maalaea Bay via a route on or south of the LNY VORTAC R-085, thence direct to the KNUJ Radio Tower, thence. . . .
MAKENA: Proceed to the KNUJ Radio Tower, thence. . . .
. . . . intercept the RWY 2 extended centerline at or prior to the Sugar Mill Smoke Stacks and proceed to the airport.

SMOKE STACK VISUAL RWY 2

20° 54'N-156° 26'W

KAHALUI, HAWAII
KAHALUI (OGG)(PHOG)

PAC, 20 FEB 2025 to 17 APR 2025