

LOC/DME I-CHO <b>111.7</b> Chan 54	APP CRS <b>030°</b>	Rwy Ldg <b>6801</b> TDZE <b>640</b> Apt Elev <b>640</b>
--	------------------------	--

# ILS or LOC RWY 3

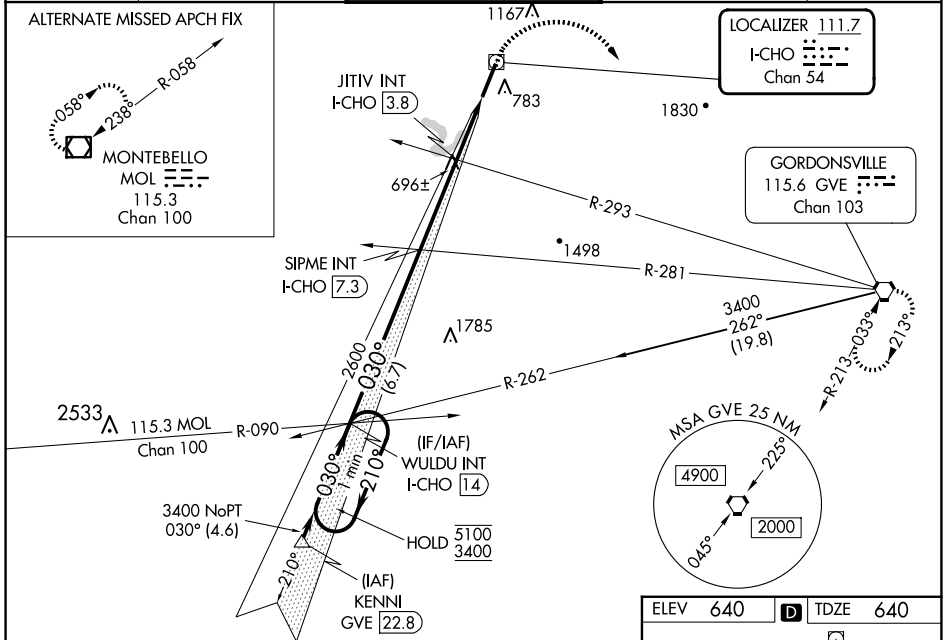
CHARLOTTESVILLE-ALBEMARLE (CHO)

**⚠** VDP NA when using Orange altimeter setting. When local altimeter setting not received, use Orange altimeter setting and increase S-ILS 3 DA to 911 and all MDA 80 feet;  
**⚠** increase S-LOC 3 JITIV fix minimums Cats C/D, S-LOC 3 Cats C/D, Circling Cats C/D, and JITIV fix minimums Circling Cats C/D visibility 1/2 SM. For inop ALS when using Orange altimeter setting, increase S-ILS 3 all Cats visibility to 2/3 SM, S-LOC 3 Cats C/D visibility to 2 SM, and S-LOC 3 JITIV fix minimums Cats C/D visibility to 1/2 SM.



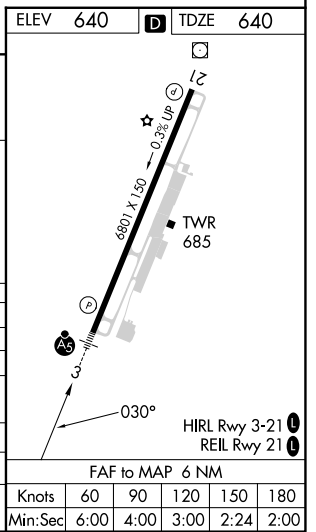
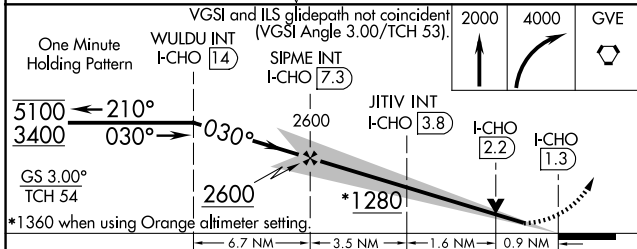
**MISSED APPROACH:**  
Climb to 2000 then climbing right turn to 4000 direct GVE VORTAC and hold.

ATIS <b>118.425</b>	POTOMAC APP CON <b>132.85 323.125</b>	CHARLOTTESVILLE TOWER ★ <b>124.5 (CTAF) 338.275</b>	GND CON <b>121.9 338.275</b>	UNICOM <b>122.95</b>
------------------------	--	--	---------------------------------	-------------------------



NE-3, 20 FEB 2025 to 20 MAR 2025

NE-3, 20 FEB 2025 to 20 MAR 2025



CATEGORY	A	B	C	D
S-ILS 3	840-1/2 200 (200-1/2)			
S-LOC 3	1280-1/2	640 (700-1/2)	1280-1 3/8	640 (700-1 3/8)
<b>C</b> CIRCLING	1280-1	640 (700-1)	1500-2 1/2 860 (900-2 1/2)	1500-2 3/4 860 (900-2 3/4)
JITIV FIX MINIMUMS (DUAL VOR RECEIVERS OR DME REQUIRED)				
S-LOC 3	980-1/2	340 (400-1/2)	980-5/8	340 (400-5/8)
<b>C</b> CIRCLING	1100-1	460 (500-1)	1500-2 1/2 860 (900-2 1/2)	1500-2 3/4 860 (900-2 3/4)

Knots	60	90	120	150	180
Min:Sec	6:00	4:00	3:00	2:24	2:00