

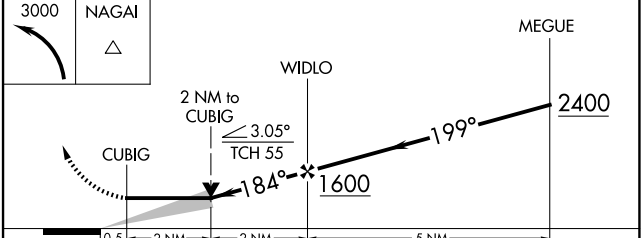
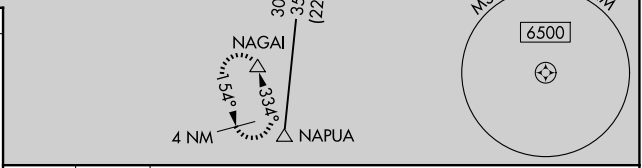
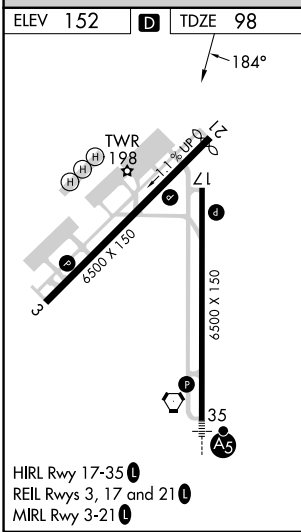
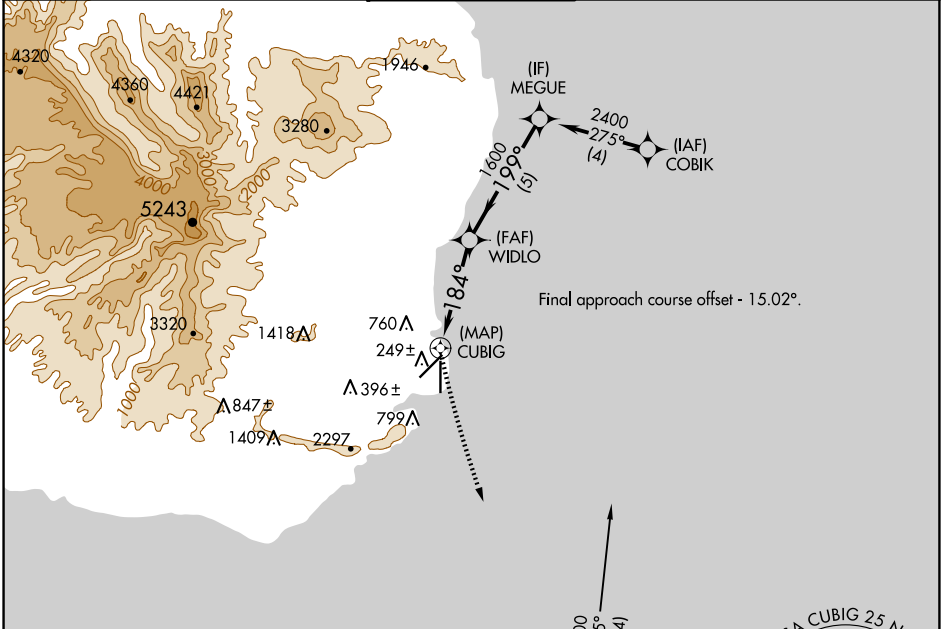
APP CRS	Rwy Idg	<b>6500</b>
<b>184°</b>	TDZE	<b>98</b>
	Apt Elev	<b>152</b>

# RNAV (GPS) RWY 17

LIHUE (LIH)(PHLI)

RNP APCH-GPS.		MISSED APPROACH: Climbing left turn to 3000 direct NAGAI and hold.	
Circling NA at night. Circling NA west of Rwy 17-35.			

ATIS <b>127.2</b>	HCF CENTER <b>126.5 269.4</b>	LIHUE TOWER* <b>118.9</b> (CTAF) <b>0 263.1</b>	GND CON <b>121.9</b>	CLNC DEL <b>126.5 269.4</b> (When twr closed)
----------------------	----------------------------------	--	-------------------------	---



CATEGORY	A	B	C	D
LNAV MDA	940-1 842 (800-1)	940-1¼ 842 (800-1¼)	940-2½	842 (800-2½)
CIRCLING	940-1 788 (800-1)	940-1¼ 788 (800-1¼)	940-2½	788 (800-2½)

PAC, 20 FEB 2025 to 17 APR 2025

PAC, 20 FEB 2025 to 17 APR 2025