

VORTAC LH 113.5	APP CRS 191°	Rwy Idg TDZE Apt Elev	6295 118 152
---------------------------	------------------------	-----------------------------	---

VOR or TACAN RWY 21

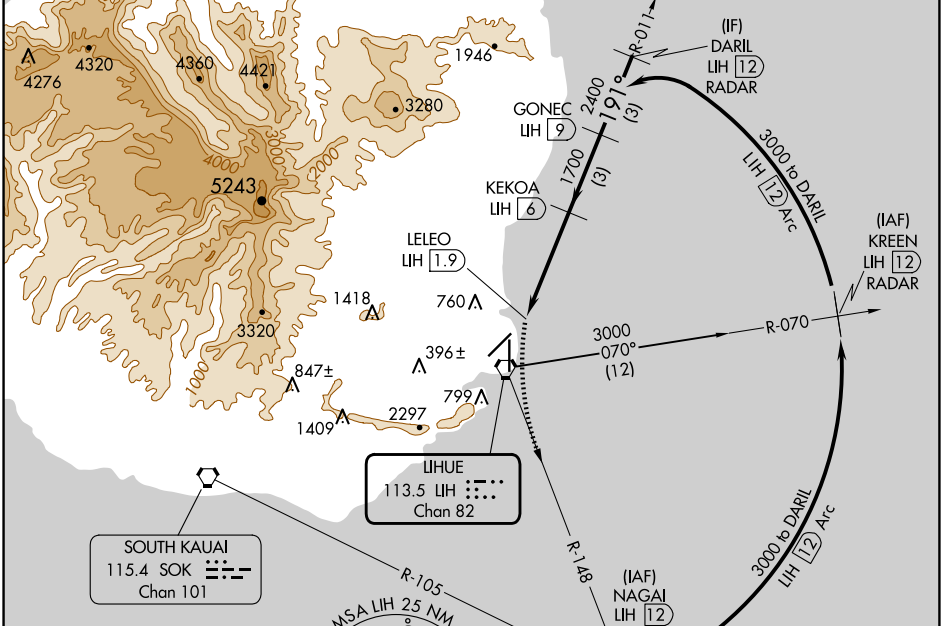
LIHUE (LIH)(PHLI)

DME required.

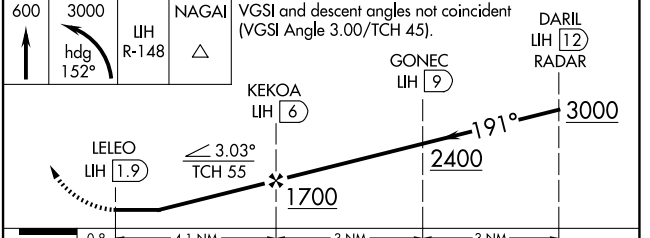
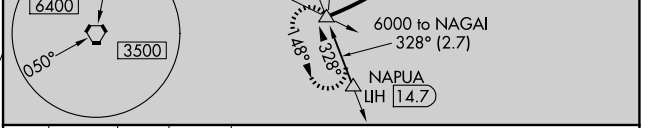
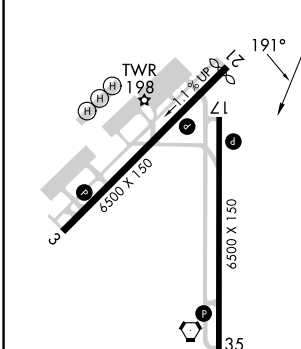
▼ Circling NA at night. Circling NA west of Rwy 17-35.
▲ Rwy 21 helicopter visibility reduction below 3/4 SM NA.

MISSED APPROACH: Climb to 600 then climbing left turn to 3000 on heading 152° and LIH VORTAC R-148 to NAGAI/1/2 DME and hold.

ATIS 127.2	HCF CENTER 126.5 269.4	LIHUE TOWER* 118.9(CTAF) 263.1	GND CON 121.9	CLNC DEL 126.5 269.4 (When twr closed)
----------------------	----------------------------------	---	-------------------------	---



ELEV 152	D	TDZE 118
----------	----------	----------



CATEGORY	A	B	C	D
S-21	520-1	402 (400-1)	520-1½	402 (400-1½)
CIRCLING	520-1 368 (400-1)	620-1 468 (500-1)	620-1½ 468 (500-1½)	720-2 568 (600-2)

PAC, 20 FEB 2025 to 17 APR 2025

PAC, 20 FEB 2025 to 17 APR 2025