

APP CRS	Rwy Idg	5000
033°	TDZE	1307
	Apt Elev	1308

RNAV (GPS) RWY 3

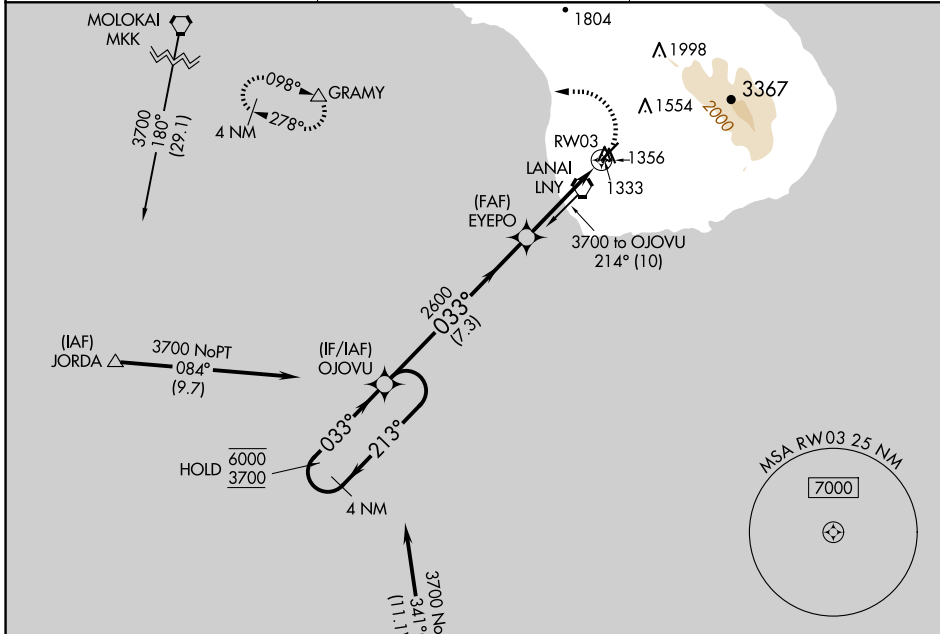
LANAI (LNY)(PHNY)

RNP APCH.

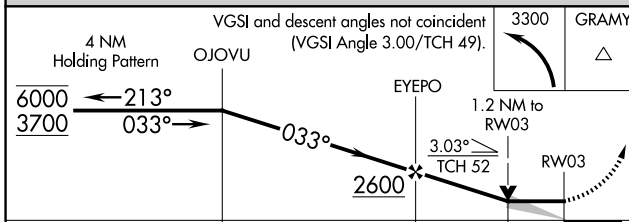
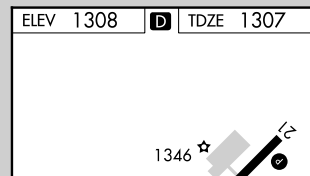
▼ Circling Rwy 21 NA at night. When local altimeter setting not received, procedure NA, except for operators with approved weather reporting service.
▲ Circling NA for Cat C southeast of Rwy 3-21.

MISSED APPROACH: Climbing left turn to 3300 direct GRAMY and hold.

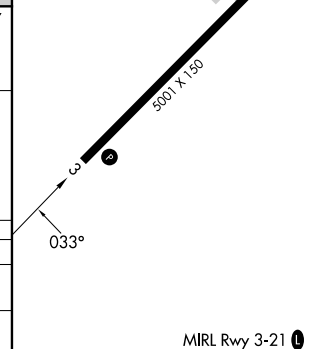
AWOS-3P 118.375	HCF CENTER 119.3 307.1	CTAF 122.9 ①
---------------------------	----------------------------------	-------------------------------



ELEV 1308	D TDZE 1307
-----------	--------------------



CATEGORY	A	B	C	D
RNAV MDA	1720-1	413 (500-1)	1720-1¼	413 (500-1¼)
CIRCLING	1840-1 532 (600-1)	1900-1 592 (600-1)	2140-2½ 832 (900-2½)	NA



PAC, 20 FEB 2025 to 17 APR 2025

PAC, 20 FEB 2025 to 17 APR 2025

MIRL Rwy 3-21 **①**