

LOC I-BZF <b>109.5</b>	APP CRS <b>175°</b>	Rwy Idg TDZE Apt Elev	<b>13503</b> <b>1922</b> <b>1922</b>
---------------------------	------------------------	-----------------------------	--

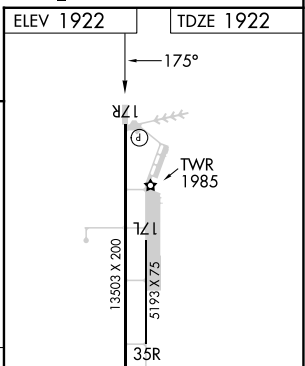
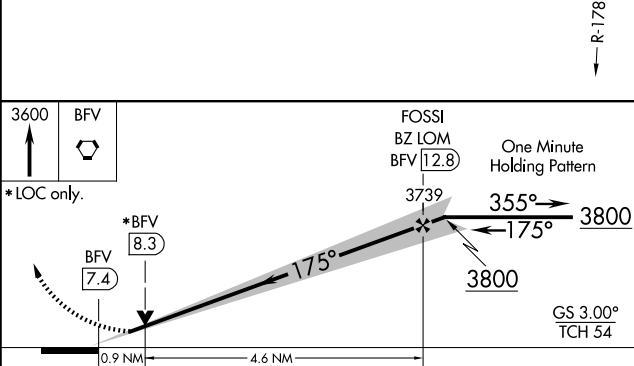
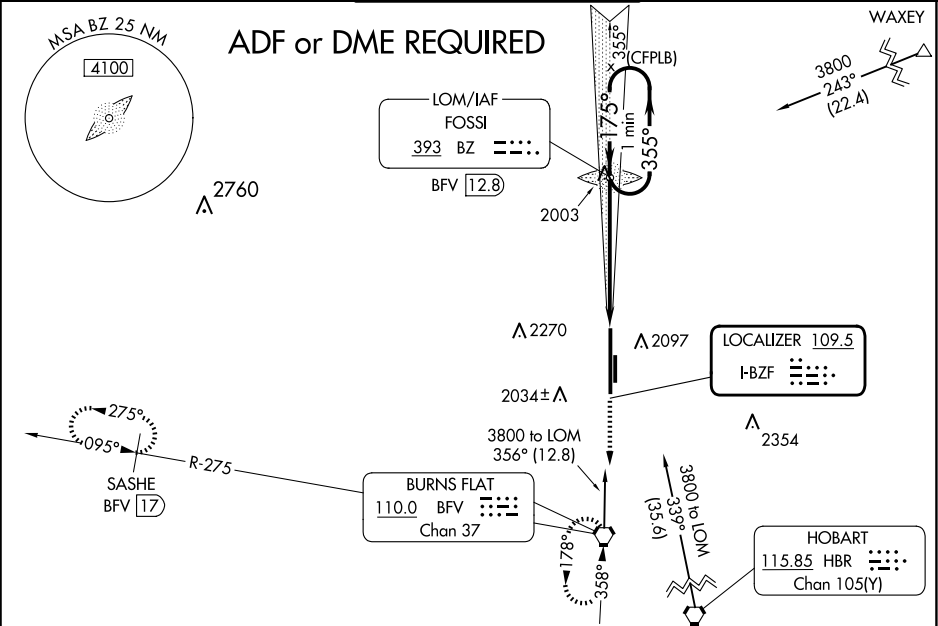
# ILS or LOC RWY 17R

CLINTON/SHERMAN (CSM)

**⚠** Circling NA east of Rwy 17R-35L.

MISSED APPROACH: Climb to 3600 direct BFV VORTAC and hold (TACAN aircraft climb to 3000 then climbing right turn to 5000 on heading 220° and on BFV VORTAC R-275 to SASHE/BFV 17 DME and hold west, left turn, 095° inbound.)

ASOS <b>118.45</b>	FORT WORTH CENTER <b>128.4 269.37</b>	CLINTON/SHERMAN TOWER* <b>119.6 (CTAF) 0 256.9</b>	GND CON <b>121.7 239.0</b>	UNICOM <b>122.95</b>
-----------------------	--	---	-------------------------------	-------------------------



CATEGORY	S-ILS 17R					S-LOC 17R					
	A	B	C	D	E	A	B	C	D	E	
S-ILS 17R	2122-3/4 200 (200-3/4)					2260-1 338 (400-1)					
S-LOC 17R	2122-3/4 200 (200-3/4)					2260-1 338 (400-1)					
CIRCLING	2340-1	2380-1	2380-1½	2620-2¼	2620-2½	2340-1	2380-1	2380-1½	2620-2¼	2620-2½	
	418 (500-1)	458 (500-1)	458 (500-1½)	698 (700-2¼)	698 (700-2½)	418 (500-1)	458 (500-1)	458 (500-1½)	698 (700-2¼)	698 (700-2½)	
Knots						Knots					
60						60					
90						90					
120						120					
150						150					
180						180					
Min:Sec						Min:Sec					
5:30						5:30					
3:40						3:40					
2:45						2:45					
2:12						2:12					
1:50						1:50					

SC-1, 20 FEB 2025 to 20 MAR 2025

SC-1, 20 FEB 2025 to 20 MAR 2025